



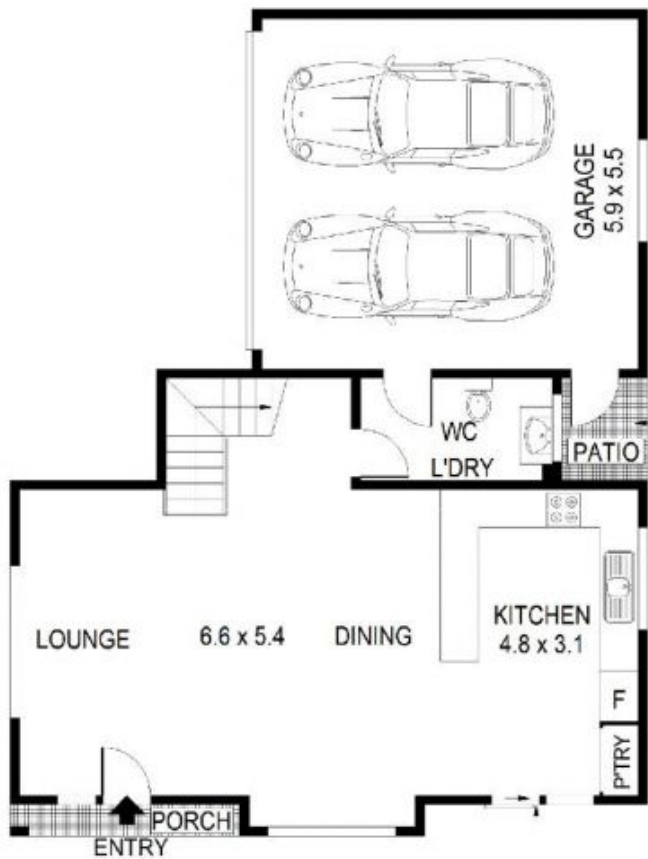
**1/26 Old Kent Road Greenacre NSW**

**4** **2** **2**

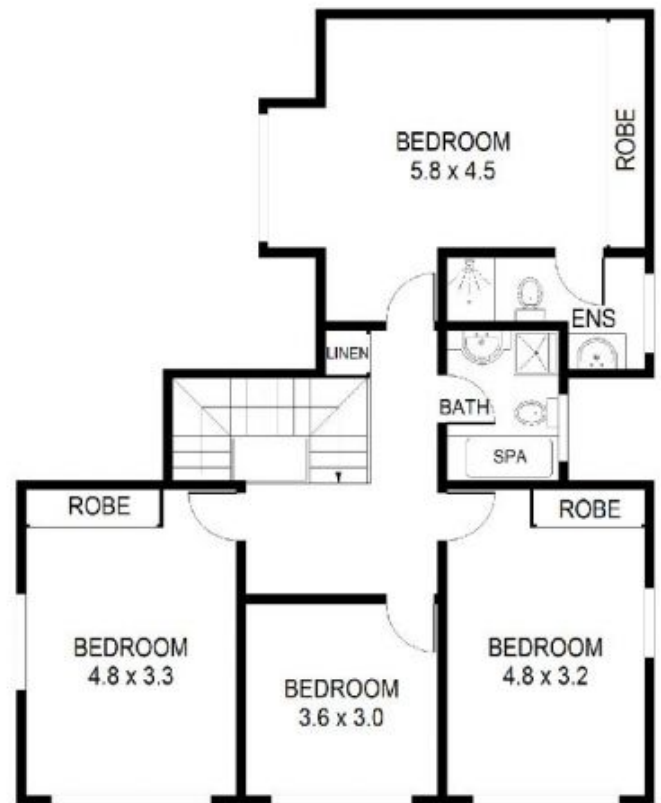
Superbly proportioned with interior spaces as big as a house, this generous townhouse is ideally located within easy access to amenities in a boutique block of only three (3).

- \* Exceptional double brick free-standing home
- \* Boutique block of only 3, no strata
- \* 4 double sized bedrooms, 3 with built-in's
- \* Modern bathrooms, main bath with spa.
- \* Huge living and dining area with tiled flooring
- \* Floating floor boards throughout on the 2nd level
- \* Kitchen with gas appliances plenty of cupboard spaces.
- \* Internal laundry with additional guest toilet

**Land Size** : 248 sqm  
**View** : <https://www.strathfieldpartners.com.au/sale/nsw/canterburybankstown/greenacre/residential/townhouse/5962729>



**GROUND FLOOR**



**UPPER FLOOR**



Scale shown in metres. All dimensions herein are approximate and gathered from sources believed to be reliable. Whilst every effort is made for the accuracy of our floor plans, interested parties should rely on their own enquires. Floor Plans by Industrie Media | [industriemedia.tv](http://industriemedia.tv)

S2

1/26 Old Kent Road, Greenacre

