



### Office 5/7-9 Churchill Avenue Strathfield NSW

Perfectly positioned in the heart of Strathfield is this modern office space in the popular Alrose complex. This multifaceted suite comes complete with a pre-existing fit-out, comprising of a reception area, three internal offices, kitchenette and balcony. With 62sqm of usable space, this is an ideal location to start or expand your business in a professional environment within close proximity to Sydney's CBD.

- Situated immaculately, just moments from Strathfield train station and Strathfield Plaza
- Versatile layout that will work around your business

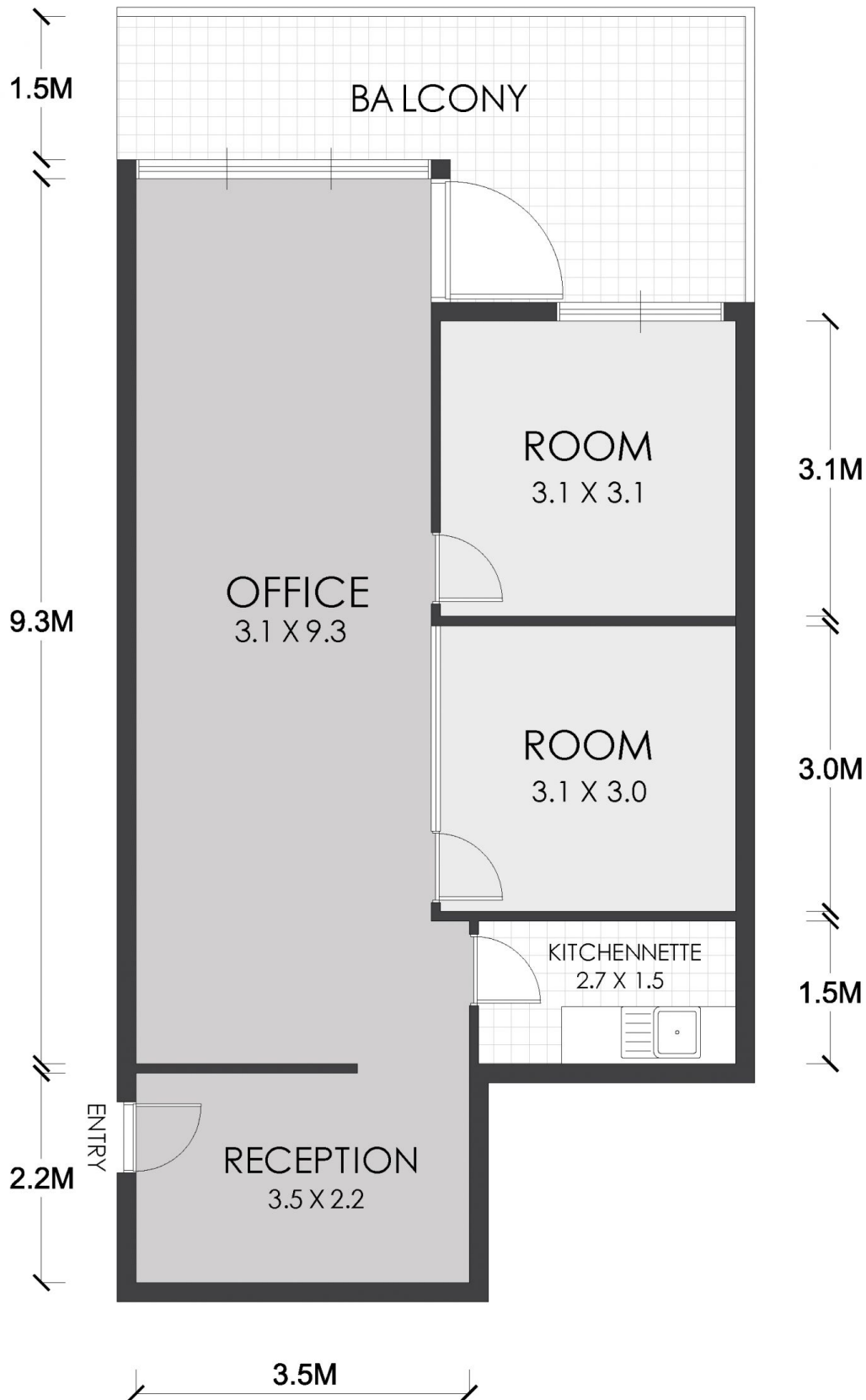
**Building Size** : 62 sqm  
**View** : <https://www.strathfieldpartners.com.au/lease/nsw/inner-west/strathfield/commercial/offices/5962919>



**Fabrizio Pignataro**  
9704 0018



**Helen Chai**  
9704 0043



## FLOOR PLAN

APPROX. AREA SIZE

Internal area 62 sqm



STRATHFIELD PARTNERS  
REAL ESTATE AGENTS

# 5/7-9 Churchill Avenue, Strathfield

**WARNING: DISCLAIMER** This information is not to be relied upon. It is strictly used for marketing and illustration purposes only. All measurements are approximate. Not to scale. No liability accepted. You must rely on your own inquiries and seek advice from your solicitor. Floor plan by [cnkplan@cnkplan.com.au](mailto:cnkplan@cnkplan.com.au) / [www.cnkplan.com.au](http://www.cnkplan.com.au)