



**STRATHFIELD PARTNERS**  
REAL ESTATE AGENTS



### 27 Boden Avenue Strathfield NSW

3 2 2

Families will appreciate the easy care single level layout with modern style & quality full brick construction. Light filled throughout discover an supremely spacious floorplan with formal and casual living areas spilling over to the covered alfresco, paved courtyard & level lawns overlooking the beautiful poolside backdrop.

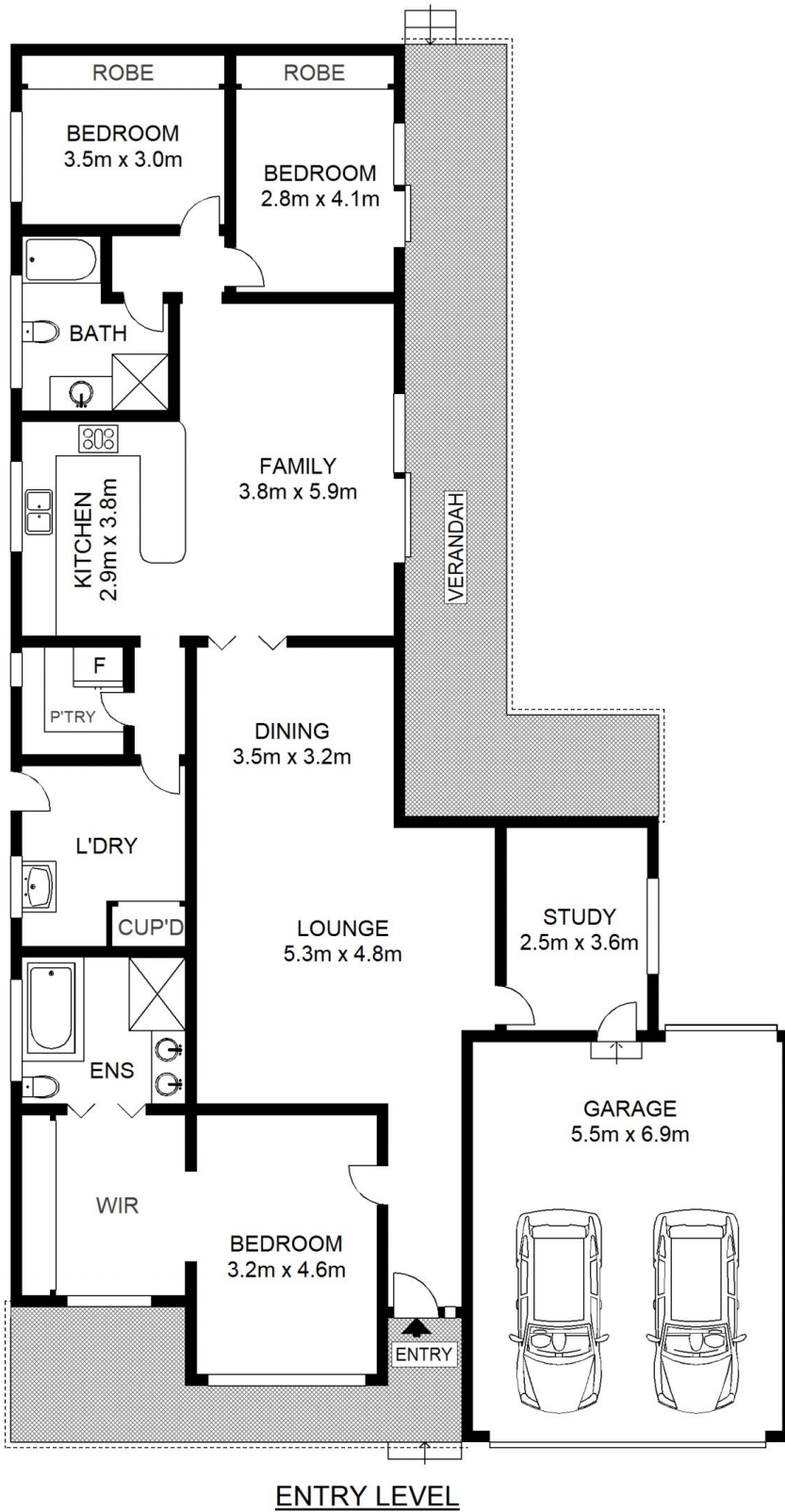
**Price** : \$ 2,645,000  
**Land Size** : 765 sqm  
**View** : <https://www.strathfieldpartners.com.au/sale/nsw/inner-west/strathfield/residential/house/5963264>

#### Property Highlights:

- \* Full brick construction with high ceilings
- \* Low maintenance home, private & stylish
- \* Three bedrooms plus home office/bed 4
- \* Huge master suite, walk thru robe and ensuite
- \* Modern conveniences - ducted ac, alarm, auto garage
- \* Expansive 765sqm block, wide tree lined street
- \* European appointed kitchen, stone benchtops
- \* Abundance of entertaining options/areas



**Robert Pignataro**  
9763 2277



## 27 Boden Avenue, STRATHFIELD

Not to scale • All measurements are approximate • Drawn for marketing purposes only • Floorplan by © Industrie Media

