



**STRATHFIELD PARTNERS**  
REAL ESTATE AGENTS



### 25-27 Blanche Street Belfield NSW

5 🏠 4 🚗 4 🚗

Focusing on relaxed and luxurious in and outdoor entertaining, this masterbuilt mansion offers a light filled haven of formal and casual living areas with premium marble floors and soaring high ceilings. With beautifully landscaped gardens, large alfresco terrace, outdoor kitchen and resort style swimming pool with cabana/teenagers retreat - this home is truly an entertainer's delight positioned on an impressive and rare block of land over 1018 square metres.

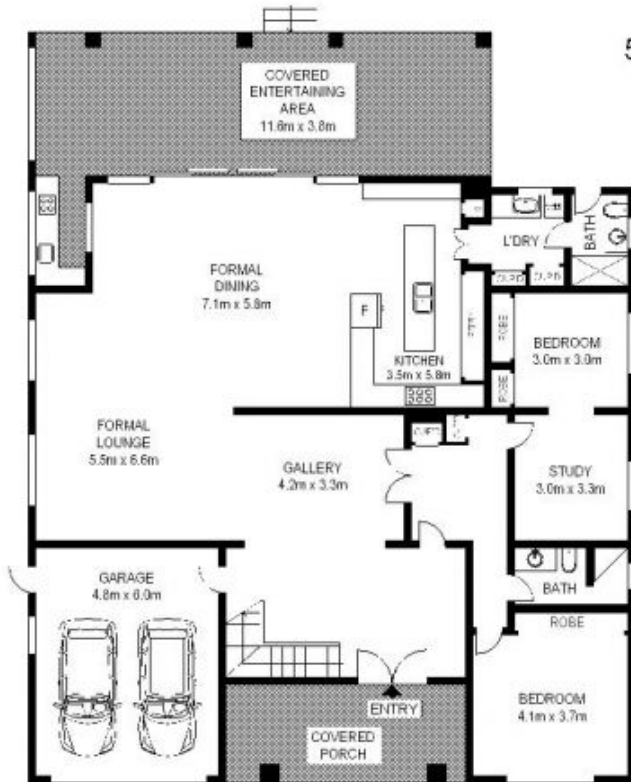
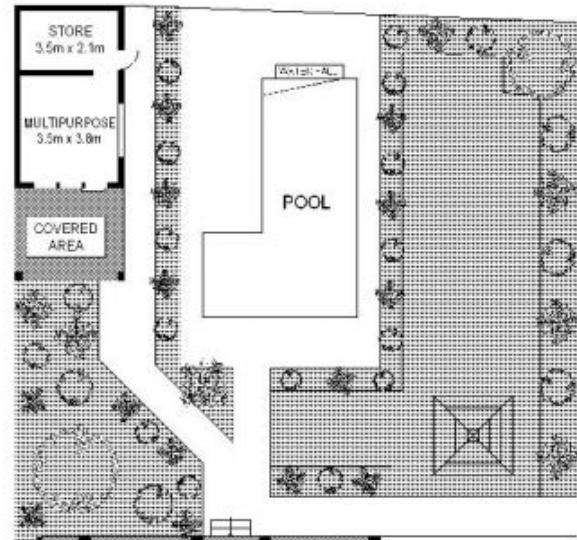
**Price** : \$ 2,505,000  
**Land Size** : 1018 sqm  
**View** : <https://www.strathfieldpartners.com.au/sale/nsw/canterburybankstown/belfield/residential/house/5963291>

- \* Rare double block over 1,018m2 with over 20m frontage
- \* Solid full brick with concrete slab and extensive landscaping
- \* Formal and casual entertaining areas
- \* Luxury marble floors, feature recessed led lighting system
- \* 5 bedrooms, separate study, upper level rumpus area
- \* Impressive master suite with walk-in robe and private

<https://www.strathfieldpartners.com.au>



LEVEL ONE



ENTRY LEVEL



20.1m  
SITE PLAN

50.9m

50.2m



# 25-27 Blanche Street, BELFIELD

Not to scale • All measurements are approximate • Drawn for marketing purposes only • Floorplan by © Industrie Media

