



STRATHFIELD PARTNERS
REAL ESTATE AGENTS



32 Karuah Street Strathfield NSW

3 1 2

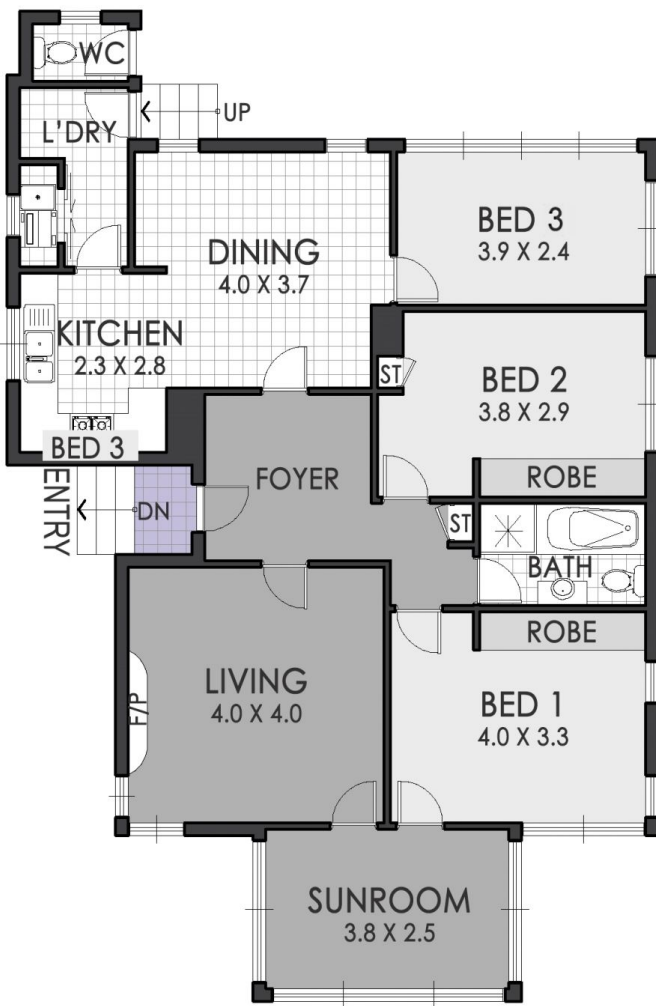
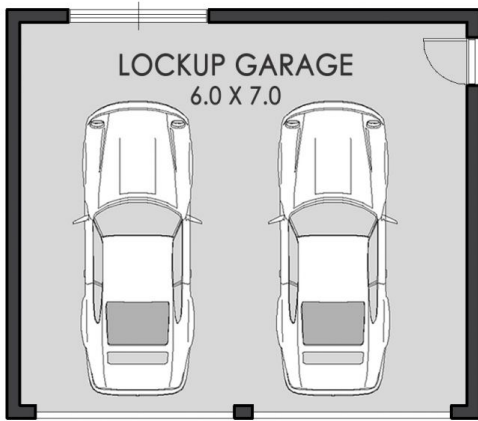
Set on an enviable and elevated 655sqm block, this double brick home enjoys expansive light filled interiors with elegant period detailing across soaring high ceilings. Discover a traditionally spacious layout with versatile living spaces flowing to the poolside outdoor area set amidst mature gardens. Held by the same family for generations, this home will appeal to buyers looking for position, prestige and privacy.

Land Size : 655 sqm
View : <https://www.strathfieldpartners.com.au/sale/nsw/inner-west/strathfield/residential/house/5963601>

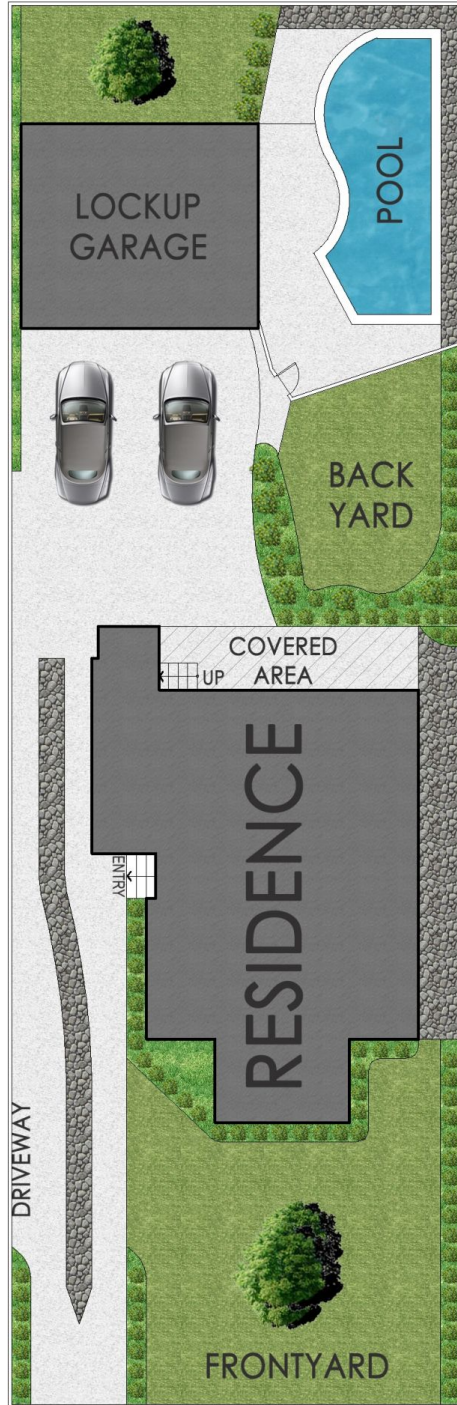
- * Elevated double brick family entertainer
- * 3 plus north facing sunroom/potential 4th bedroom
- * Modern L shaped kitchen with gas cooking and ample storage
- * Formal living area, separate dining, internal laundry
- * Well landscaped block with rear in ground pool
- * Excellent scope to rejuvenate, extend/rebuild stca
- * Double lock up garage plus deep side driveway for 3-4



Vanessa Kim
9704 0009



FLOOR PLAN



SITE PLAN



STRATHFIELD PARTNERS
REAL ESTATE AGENTS

32 Karuah Street, Strathfield

The floor plan is shown for view purposes only and is not part of any legal document. All measurements and figures are approximate and not to scale. Floor plan by CNK PLAN / www.cnkplan.com.au