




63 Cotswold Road Strathfield NSW

6  3  2 

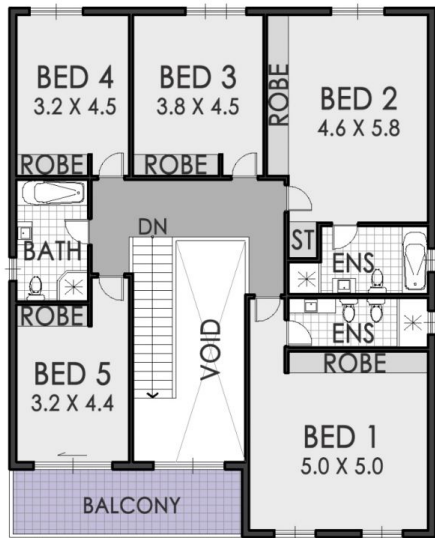
Nestled in one of the area's most sought after blue ribbon locations in the golden mile, this impressive family home presents an idyllic lifestyle, flawlessly presented with vast double height ceilings. Embracing a prized north to rear aspect, you will enjoy the space, light and quality construction - relax over the dual living spaces including a light filled dining and family area flowing to the child friendly outdoors & covered rear terrace.

- * Dual level family entertainer with soaring high ceilings and light filled interiors
- * Picturesque sky light, large windows and statement stair case with chandelier
- * Formal and casual living areas, separate dining, large family sized kitchen
- * Expansive rear family entertaining area extending to the idyllic rear yard

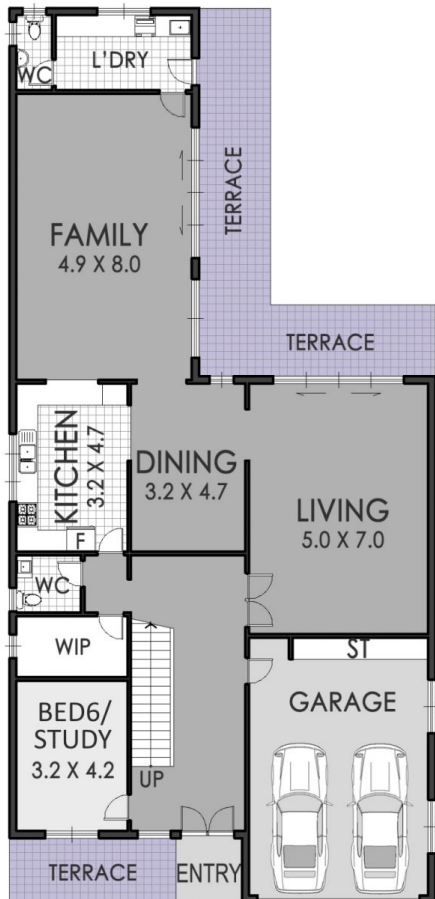
Price : \$ 3,480,000
Land Size : 728 sqm
View : <https://www.strathfieldpartners.com.au/sale/nsw/inner-west/strathfield/residential/house/5963642>



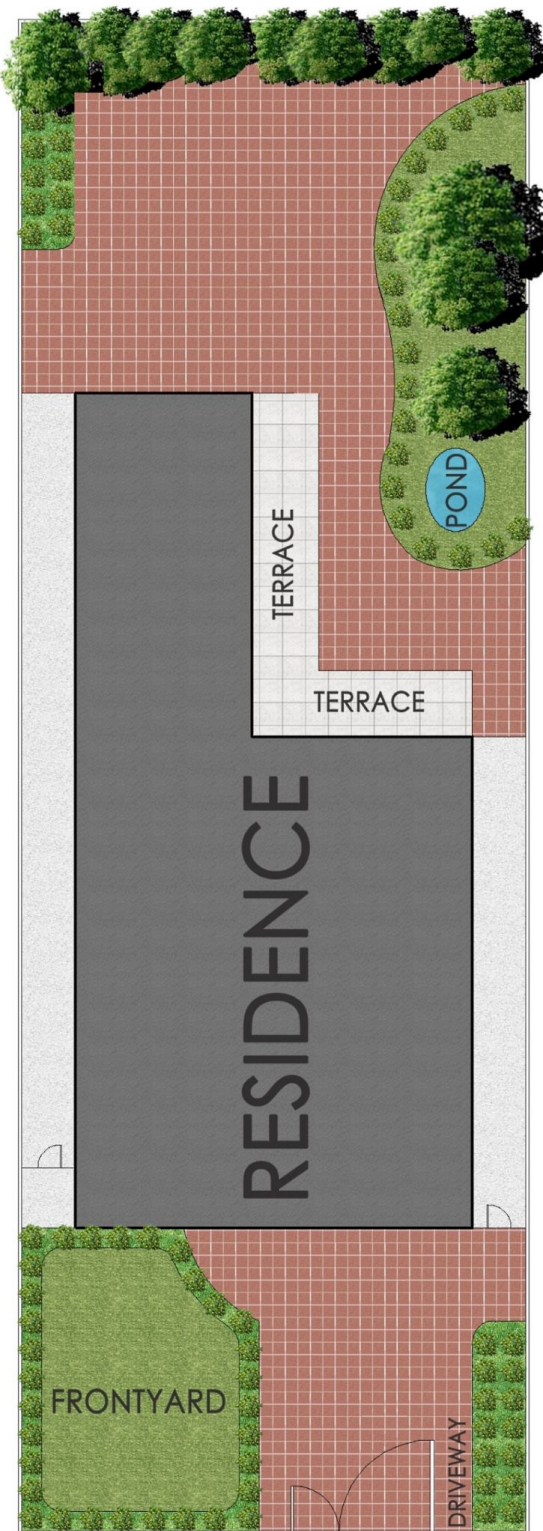
Vanessa Kim
9704 0009



FIRST FLOOR



GROUND FLOOR



SITE PLAN



63 Cotswold Road, Strathfield

The floor plan is shown for view purposes only and is not part of any legal document. All measurements and figures are approximate and not to scale.