

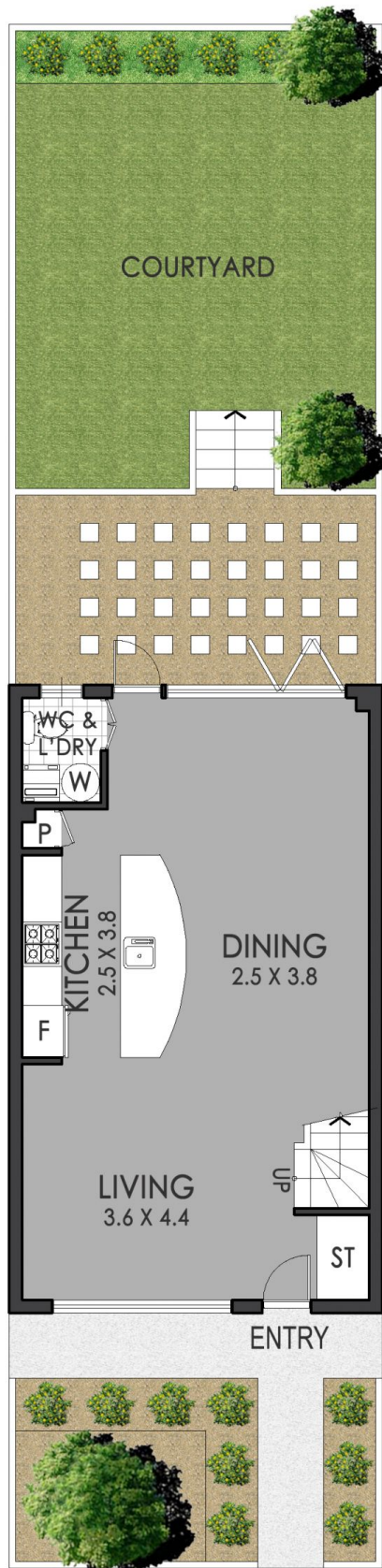
6/14-16 Bowden Street North Parramatta NSW

2 **1** **1**

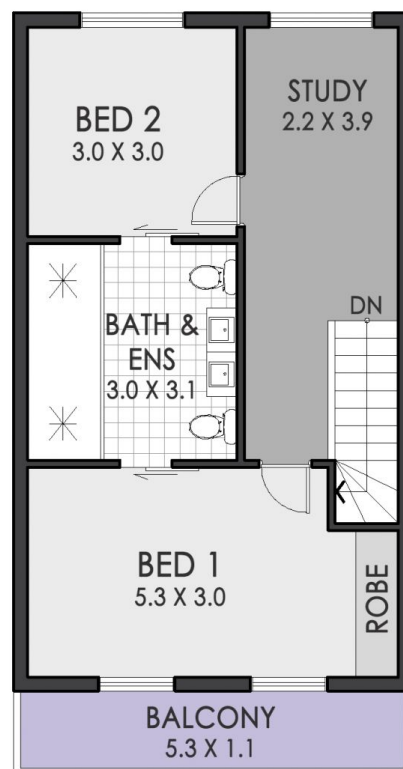
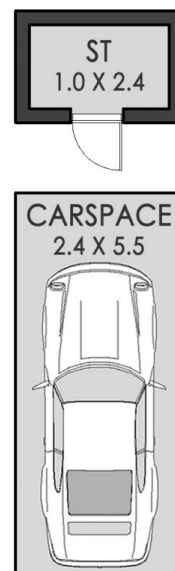
This sensational modern retreat is ideally placed within the boutique Montago Estate, offering a versatile array of indoor and outdoor space. Discover stunning interiors with chefs galley style kitchen, casual and formal living areas and superb north facing garden haven. All this and more, nestled within a lifestyle location only minutes to local leisure amenities, parks, Parramatta's array of schools, eateries, public transport and facilities.

View : <https://www.strathfieldpartners.com.au/sale/nsw/parramatta/north-parramatta/residential/townhouse/5963652>

- * Ultra modern townhouse with ideal north aspect
- * Light filled open plan living area with floating floors
- * Gourmet chefs kitchen with breakfast bar and gas cooking
- * Split system air conditioning unit and gas point for heating
- * Additional upper level study nook/casual sitting area/rumpus
- * Modern bathroom with bedroom access, lower level



GROUND FLOOR



FIRST FLOOR



STRATHFIELD PARTNERS
REAL ESTATE AGENTS

6/14-16 Bowden Street, North Parramatta

The floor plan is shown for view purposes only and is not part of any legal document. All measurements and figures are approximate and not to scale.
Floor plan by CNK PLAN / www.cnkplan.com.au