



12-14 Churchill Avenue Strathfield NSW

Strathfield Partners have the pleasure in offering for sale, The Symond Arcade at 12-14 Churchill Avenue, Strathfield - a truly rare and unique opportunity.

Located in the heart of Strathfield's bustling city centre, directly next to Strathfield Plaza and within 5-10 metres of Strathfield Railway Station, the Symond Arcade comprises a ground level foyer with 12 retail shops and 1 upper level comprising of 14 offices with exceptional future commercial/residential development opportunity stca.

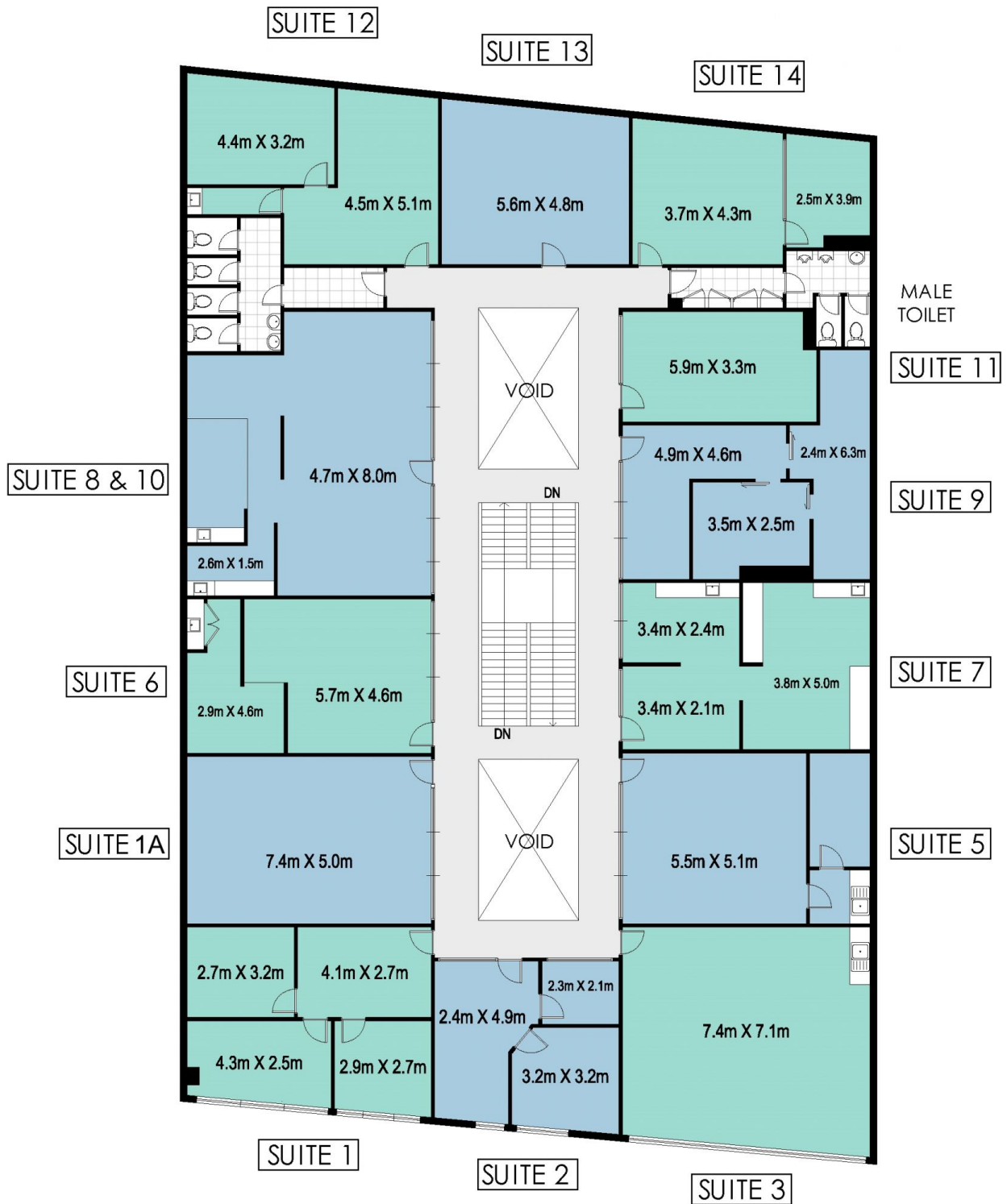
- * 645sqm block of land with frontage to Churchill Avenue
- * Freestanding commercial building 5-10metres to Strathfield Station
- * 2 level building with 12 retail shops and 14 office spaces
- * Development potential stca - Zoning: B3 - Commercial

12  6 

Land Size : 645 sqm
View : <https://www.strathfieldpartners.com.au/sale/nsw/inner-west/strathfield/residential/block-of-units/5963721>



Robert Pignataro
9763 2277



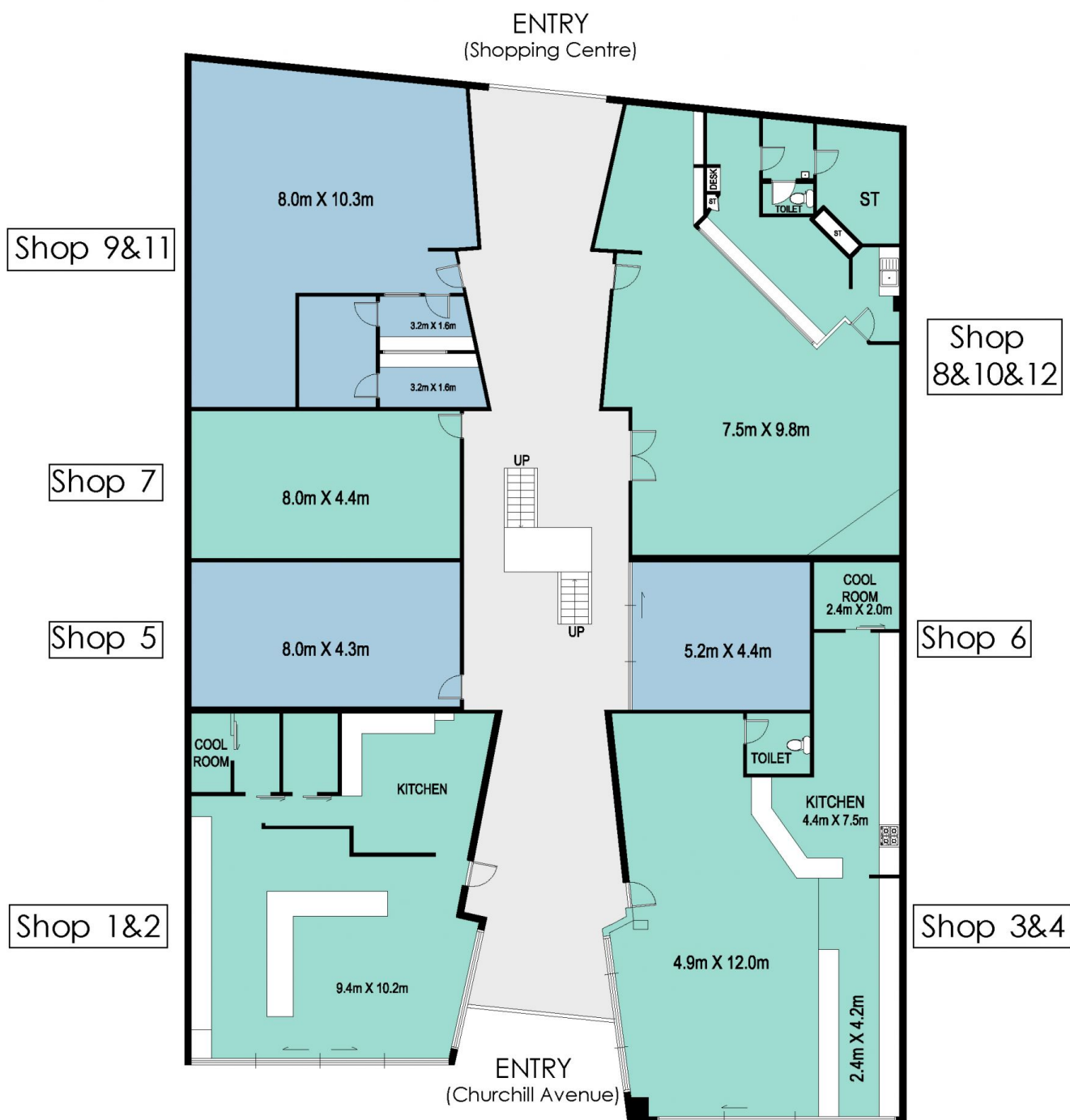
FIRST FLOOR



STRATHFIELD PARTNERS
REAL ESTATE AGENTS

12 Churchill Avenue, Strathfield

The floor plan is shown for view purposes only and is not part of any legal document. All measurements and figures are approximate and not to scale.
Floor plan by CNK PLAN / www.cnkplan.com.au



GROUND FLOOR



STRATHFIELD PARTNERS
REAL ESTATE AGENTS

12 Churchill Avenue, Strathfield

The floor plan is shown for view purposes only and is not part of any legal document. All measurements and figures are approximate and not to scale.
Floor plan by CNK PLAN / www.cnkplan.com.au