



STRATHFIELD PARTNERS
REAL ESTATE AGENTS



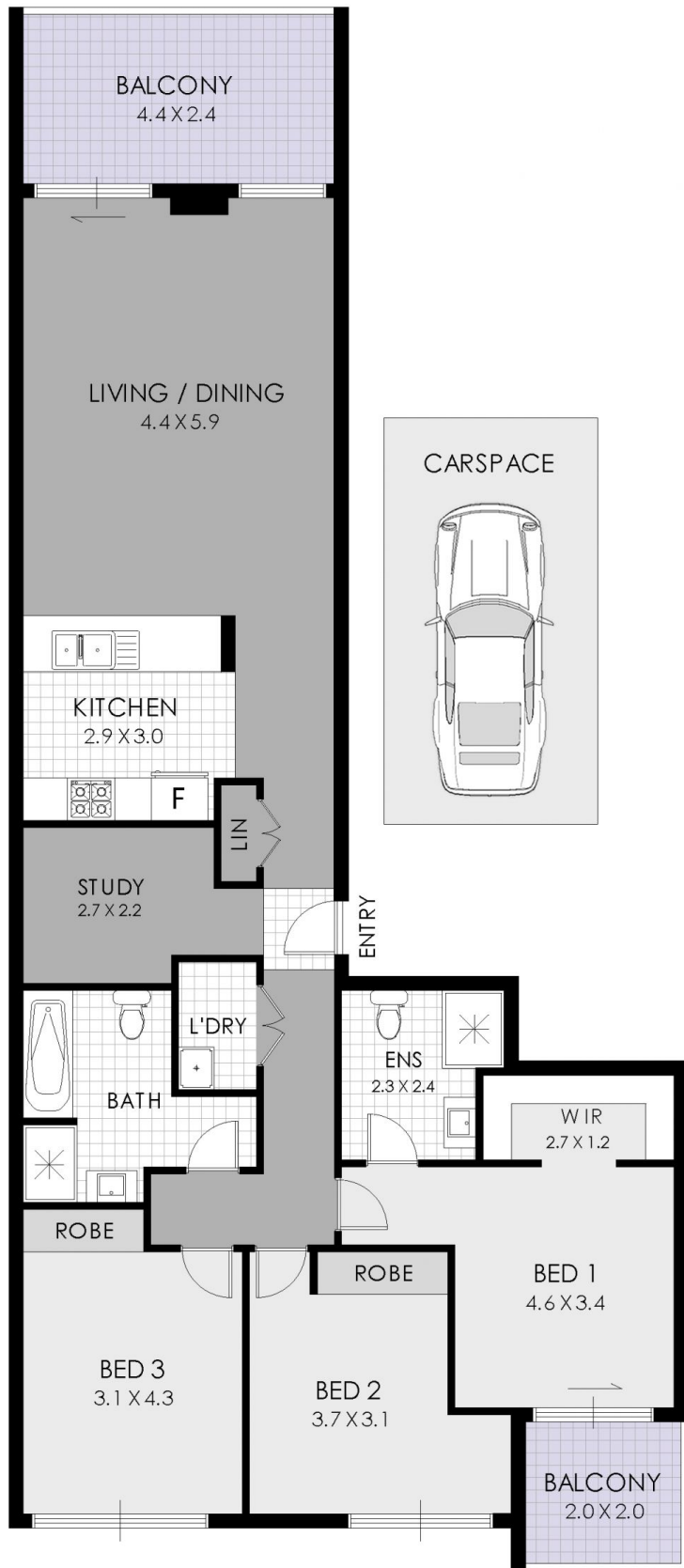
13/69 Elizabeth Drive Liverpool NSW

3 2 1

This family friendly apartment has sheer size with premium appointments over a generous floor plan. Relax and entertain in the generous open plan living area which adjoins the north facing entertainers' balcony via high glass sliding doors ensuring airy and bright interiors plenty of natural light and ventilation. One of few three bedrooms in the highly sought after 'Elizabeth' complex.

View : <https://www.strathfieldpartners.com.au/sale/nsw/liverpool-fairfield/liverpool/residential/apartment/5963807>

- * Spacious and airy 3 bedroom + study on the fourth floor
- * Large open plan living area, north facing balcony
- * Huge master bed with walk in robe, en-suite & balcony
- * 2 bedrooms with built-ins, study / home office
- * Tiled main bathroom with full size bath tub
- * Air conditioning, storage, internal laundry, linen cupboard
- * Security intercom system, basement parking
- * 127sqm internal and balconies + 14sqm parking



FLOOR PLAN



STRATHFIELD PARTNERS
REAL ESTATE AGENTS

13/69 Elizabeth Drive, Liverpool

The floor plan is shown for view purposes only and is not part of any legal document. All measurements and figures are approximate and not to scale.