



30 Kingsland Road Strathfield NSW

5 3 2

Exuding privacy and elegance this is a unique offering on the prized Kingsland Road of Strathfield's Golden Mile. Set on a 505.9sqm block of well-established gardens, this impressive home offers the best in contemporary family living with an open floor plan boasting a series of flexible living areas surrounding a central kitchen hub with elegant interiors and high ceilings throughout while an elevated rear terrace provides an alfresco dining area in peaceful garden surrounds.

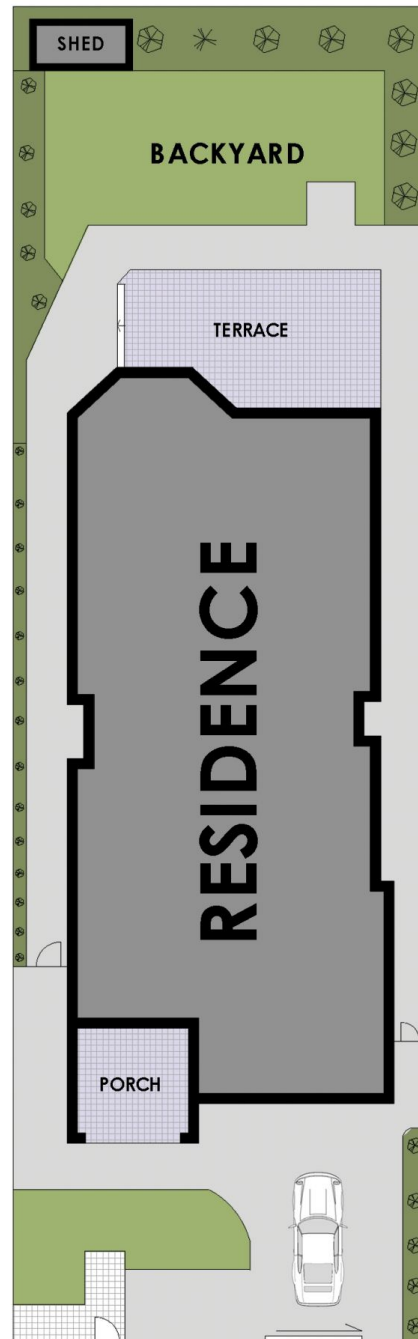
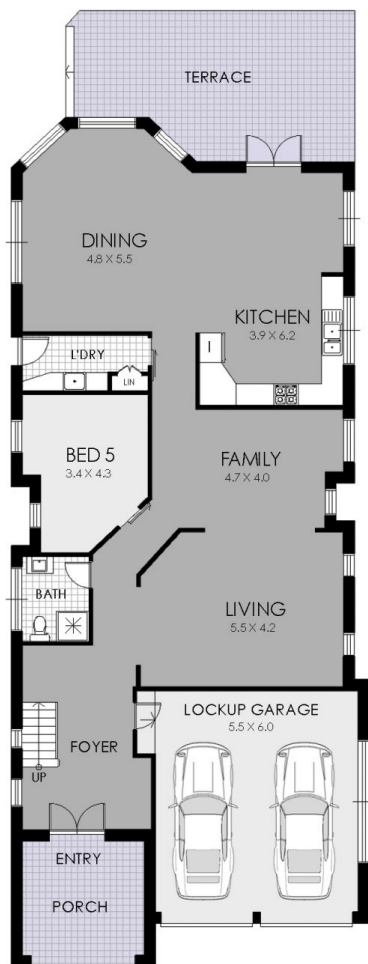
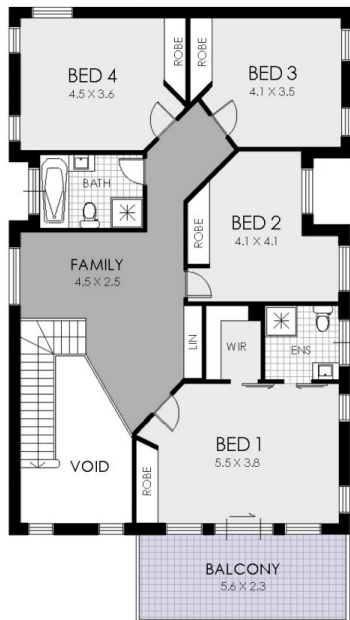
- * Modern and substantial family home on the Golden Mile
- * Superbly appointed and set on landscaped gardens of 505.9sqm
- * Versatile floor plan with flexible formal and casual living areas
- * Large family kitchen with gas cooking, s/s appliances and island bench

Price : \$ 3,120,000

View : <https://www.strathfieldpartners.com.au/sale/nsw/inner-west/strathfield/residential/house/5963822>



Vanessa Kim
9704 0009



STRATHFIELD PARTNERS
REAL ESTATE AGENTS

30 Kingsland Road, Strathfield

WARNING: DISCLAIMER This information is not to be relied upon. It is strictly used for marketing and illustration purposes only. All measurements are approximate. Not to scale. No liability accepted. You must rely on your own inquiries and seek advice from your solicitor.