



STRATHFIELD PARTNERS  
REAL ESTATE AGENTS



### 19/147 Parramatta Road Granville NSW

2 2 1

Nestled high with district views is this ultra-modern, split level apartment boasting a versatile floor plan across two levels of living with state of the art inclusions and premium appointments throughout. Ideally placed within 350m to Granville Railway Station and within 450m to Granville eateries, amenities, public transport and local schools.

**Price** : \$ 575,000

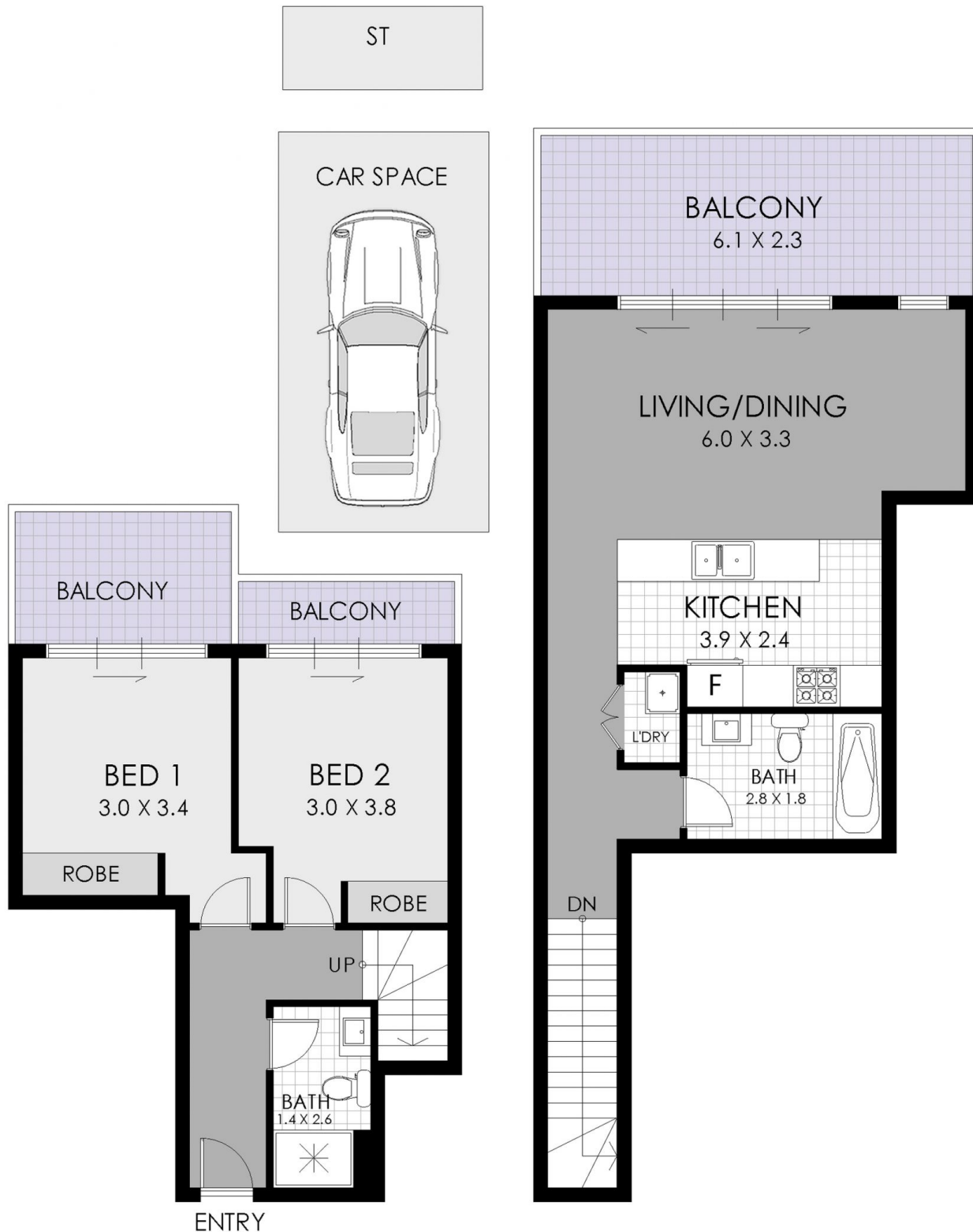
**View** : <https://www.strathfieldpartners.com.au/sale/nsw/parramatta/granville/residential/apartment/5963851>

- \* Ultra modern JADE apartment within a secure, boutique complex
- \* Spacious and light filled living spaces across a versatile floor plan
- \* Gourmet chefs kitchen with high quality stone benches and gas cooking
- \* Excellent ventilation and natural light throughout
- \* Cleverly concealed laundry, modern main bath with full sized bath
- \* Air conditioning, stylish down lights and shadow-lined



**Elie Semrani**  
9704 0031

<https://www.strathfieldpartners.com.au>



GROUND FLOOR

FIRST FLOOR



STRATHFIELD PARTNERS  
REAL ESTATE AGENTS

19/145 Parramatta Road, Granville

**WARNING: DISCLAIMER** This information is not to be relied upon. It is strictly used for marketing and illustration purposes only. All measurements are approximate. Not to scale. No liability accepted. You must rely on your own inquiries and seek advice from your solicitor. Floor plan by [cnkplan@cnkplan.com.au](mailto:cnkplan@cnkplan.com.au) / [www.cnkplan.com.au](http://www.cnkplan.com.au)