



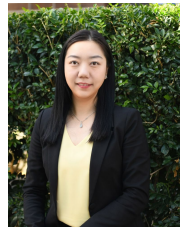
3/24-26 Morwick Street Strathfield NSW

2  1  1 

Combining traditional character with tasteful modern updates, this apartment is a great entry point into the sought after Strathfield market. Stylishly presented, it features a cleverly designed floor plan with separate living and dining spaces with stunning timber floors throughout.

- * Stunning north facing apartment with leafy outlook
- * Timeless floorplan, open and flowing with high ceilings
- * Stylish timber kitchen, new bathroom with integrated laundry
- * Premium timber floor boards, freshly painted, bedrooms with built-in robes
- * Boutique complex within walking distance to amenities

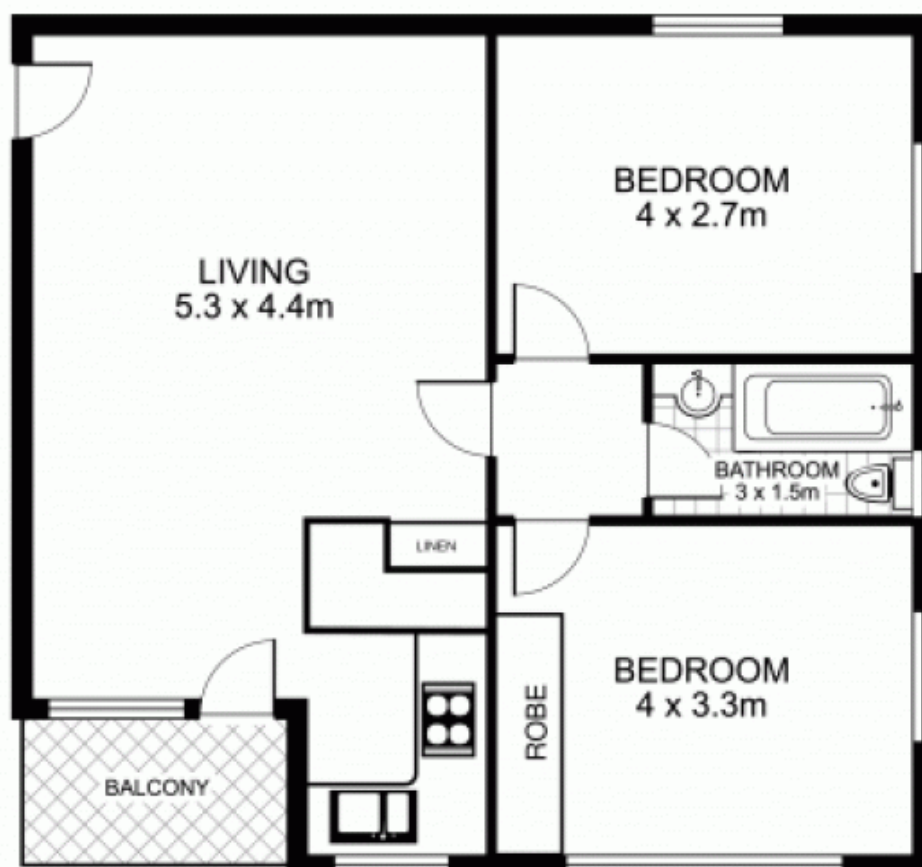
View : <https://www.strathfieldpartners.com.au/lease/nsw/inner-west/strathfield/residential/unit/5963869>



Rachel Yunuo Fu
0433 364 915

Disclaimer: We have in preparing this document, used our best endeavours to ensure that all the information

**14/26 Morwick St,
STRATHFIELD**



This floor plan is intended as a guide only. Layout dimensions are approximate only. No representations or warranties of any nature whatsoever are given or intended. Any person using this information should rely on their own enquiries.