






STRATHFIELD PARTNERS
REAL ESTATE AGENTS



6/25 Melton Street Silverwater NSW

3  2  2 

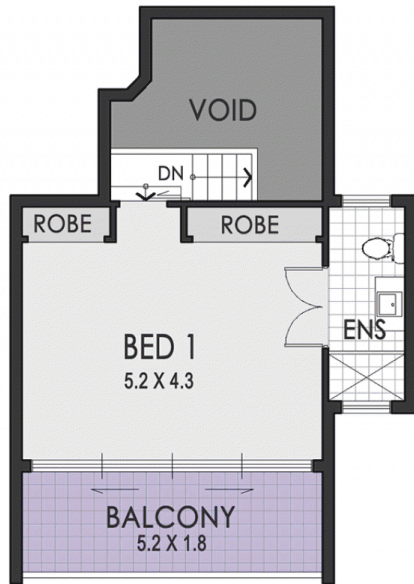
Created as a unique sanctuary on an expansive 288sqm, this home has house proportions over a unique and innovative design across three levels - the perfect home for those seeking contemporary living with an oversized floorplan, ideally placed in a lifestyle location with all of Newington & Sydney Olympic Park's leisure options, shops, restaurants & child friendly waterside parklands within easy access.

Price : \$ 960,000

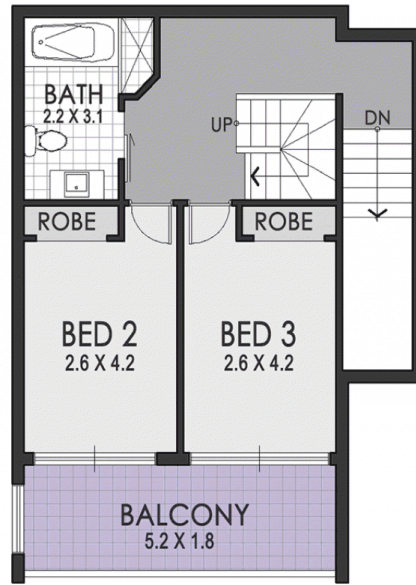
View : <https://www.strathfieldpartners.com.au/sale/nsw/parramatta/silverwater/residential/townhouse/5963876>

- * Solid concrete construction, commercial grade steel structure
- * Huge 288sqm on title over three floors plus basement double garage
- * Polished bamboo flooring, high ceilings throughout
- * Gourmet open plan gas kitchen, smeg appliances
- * Seamless integration between in/outdoor zones
- * Front and rear entertaining courtyards, timber decking

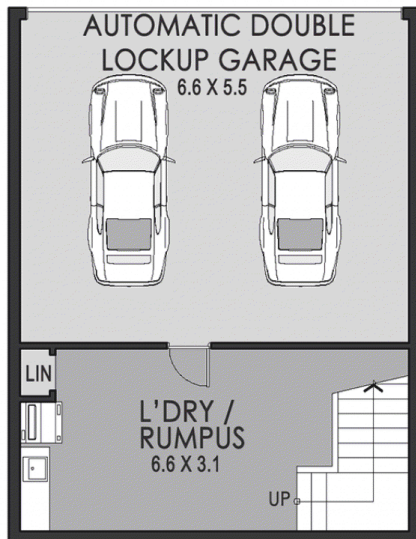
<https://www.strathfieldpartners.com.au>



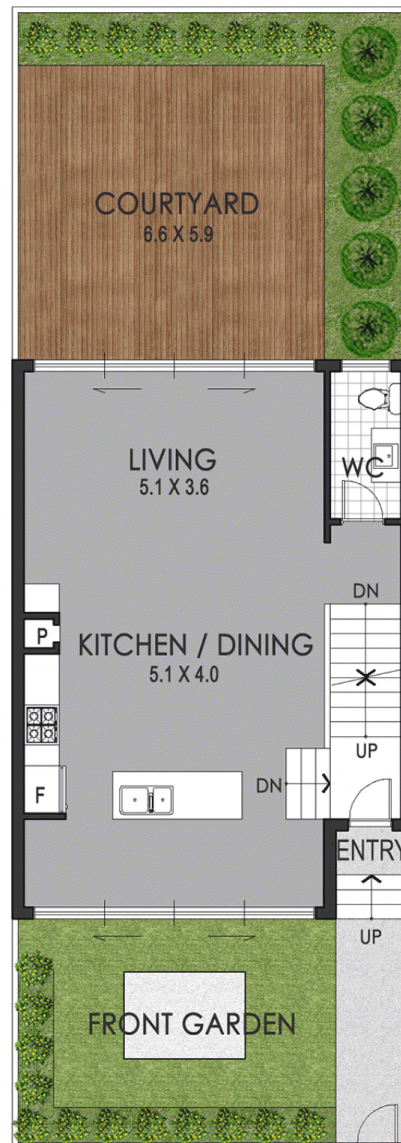
SECOND FLOOR



FIRST FLOOR



LOWER GROUND



GROUND FLOOR



APPROX. AREA SIZE	
Internal Area	163.5 sqm
Balcony	18.2 sqm
Garage & Storage	36.3 sqm
Courtyard	64.0 sqm
Total area	282.0 sqm



STRATHFIELD PARTNERS
REAL ESTATE AGENTS

6/25 Melton Street North, Silverwater