



**STRATHFIELD PARTNERS**  
REAL ESTATE AGENTS



### 99/1-3 Beresford Road Strathfield NSW

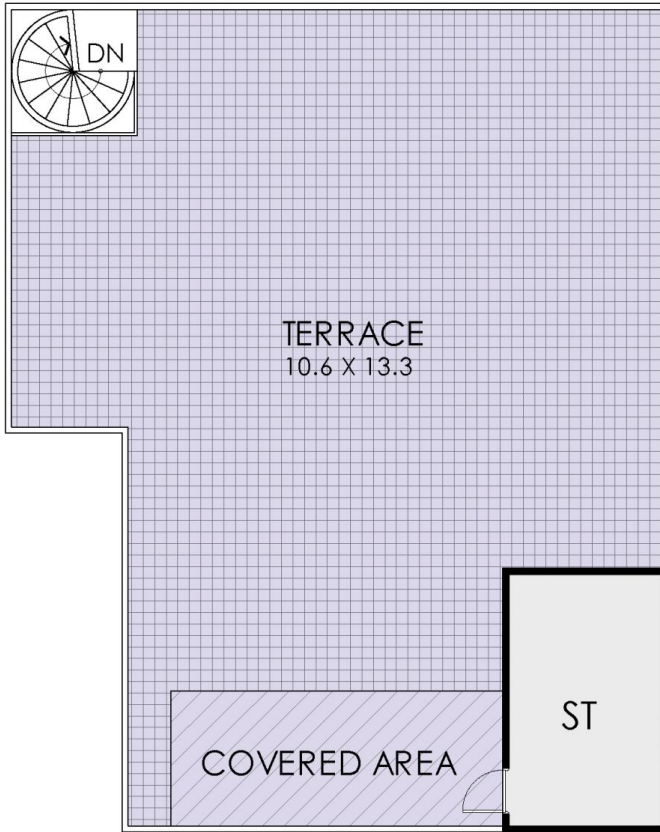
2 2 2

Rare opportunity to secure one of Strathfield's largest penthouses, occupying a private position over levels 10 and 11, taking in iconic panoramic views of the Sydney CBD skyline and surrounds. This oversized apartment is one of the special few with a rooftop terrace - providing an uplifting sense of space, light and privacy.

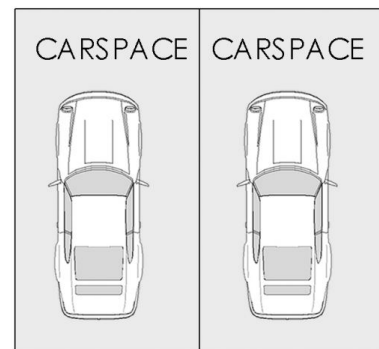
**View** : <https://www.strathfieldpartners.com.au/sale/nsw/inner-west/strathfield/residential/apartment/5963993>

- \* Exceptionally spacious 271sqm on title
- \* Strathfield's boutique penthouse over levels 10 and 11
- \* Two floors of spacious living/entertaining space
- \* Quality inclusions including timber floors and granite benchtops
- \* Light filled open plan layout with sunny north aspect
- \* Family sized kitchen with euro appliances
- \* Two modern bathrooms plus internal laundry
- \* Footsteps to Strathfield shopping, restaurant & station
- \* Underground security carspaces, lift access

<https://www.strathfieldpartners.com.au>



ROOF TOP TERRACE



FLOOR PLAN



STRATHFIELD PARTNERS  
REAL ESTATE AGENTS

99/1-3 Beresford Road, Strathfield

**WARNING: DISCLAIMER** This information is not to be relied upon. It is strictly used for marketing and illustration purposes only. All measurements are approximate. Not to scale. No liability accepted. You must rely on your own inquiries and seek advice from your solicitor. Floor plan by [cnkplan@cnkplan.com.au](mailto:cnkplan@cnkplan.com.au) / [www.cnkplan.com.au](http://www.cnkplan.com.au)