



8/30 Morwick Street Strathfield NSW

2  1  1 

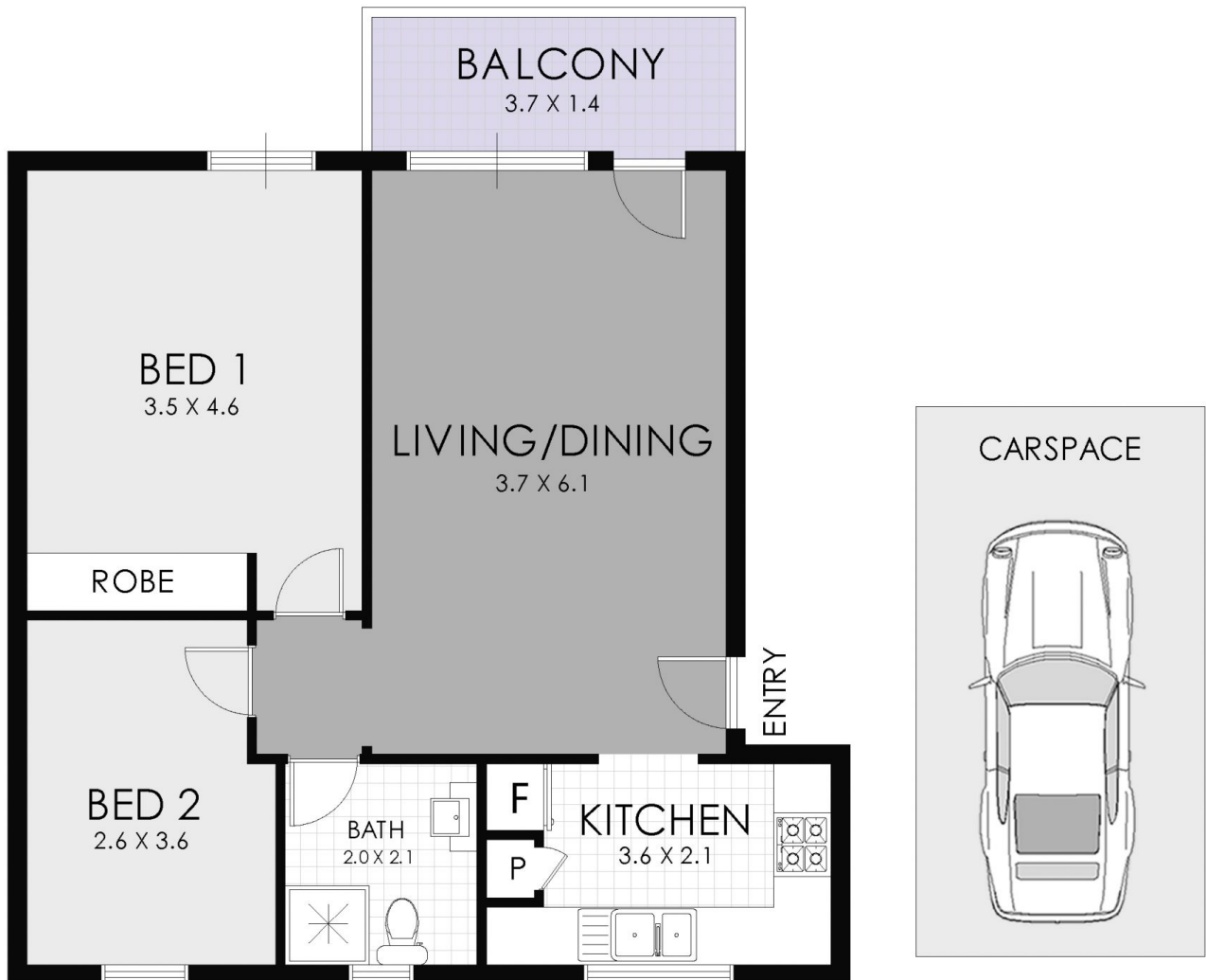
Combining convenience with traditional space, this apartment is a great entry point into the sought after Strathfield market. Featuring a versatile, spacious floor plan with an open plan lounge and dining space with high ceilings and ideal bright North aspect. Opposite the Strathfield Tennis Club and merely steps to Strathfield train station, amenities and eateries.

View : <https://www.strathfieldpartners.com.au/sale/nsw/inner-west/strathfield/residential/apartment/5964005>

- * Traditionally spacious first floor apartment with North aspect
- * Well-proportioned interiors with high ceilings and natural light
- * Large main bed with built-in robe, 2nd bed with window
- * Spacious and modern kitchen with ample storage
- * Boutique complex within walking distance to amenities
- * Allocated car space



Liz Xuanlin Chen
9704 0005



FLOOR PLAN



STRATHFIELD PARTNERS
REAL ESTATE AGENTS

8/30 Morwick Street, Strathfield

WARNING: DISCLAIMER This information is not to be relied upon. It is strictly used for marketing and illustration purposes only. All measurements are approximate. Not to scale. No liability accepted. You must rely on your own inquiries and seek advice from your solicitor. Floor plan by cnkplan@cnkplan.com.au / www.cnkplan.com.au