



STRATHFIELD PARTNERS
REAL ESTATE AGENTS



4/122 Frederick Street Ashfield NSW

2 1 1

Teeming with natural light from an east aspect is this affordable first home or solid investment opportunity. Come home to the generous living space with high ceilings and stylishly rejuvenated interiors with brand new kitchen and bathroom, new timber laminate floating floors and fresh painted throughout.

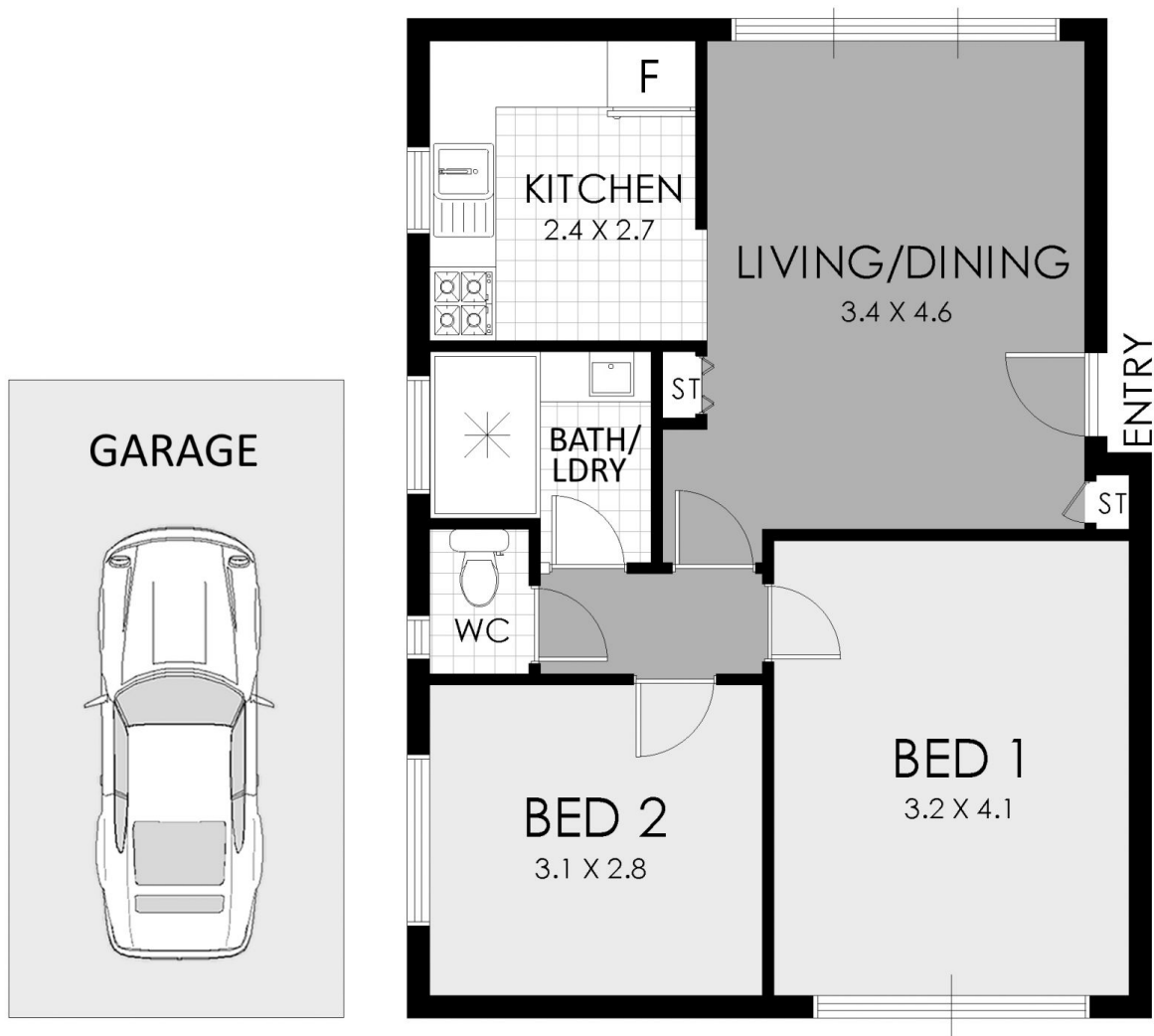
View : <https://www.strathfieldpartners.com.au/sale/nsw/inner-west/ashfield/residential/apartment/5964038>

Peacefully located within a boutique brick complex, within easy walking distance to Ashfield's amenities, parks, transport and retail.



Elie Semrani
9704 0031

- * Small, boutique brick building of only 8
- * Spacious open plan living with bright east aspect
- * Newly renovated with stylishly enhanced interiors
- * Brand new, modern kitchen and bathroom
- * Single lock up garage, walk to local amenities



FLOOR PLAN



4/122 Frederick Street, Ashfield

WARNING: DISCLAIMER This information is not to be relied upon. It is strictly used for marketing and illustration purposes only. All measurements are approximate. Not to scale. No liability accepted. You must rely on your own inquiries and seek advice from your solicitor.