



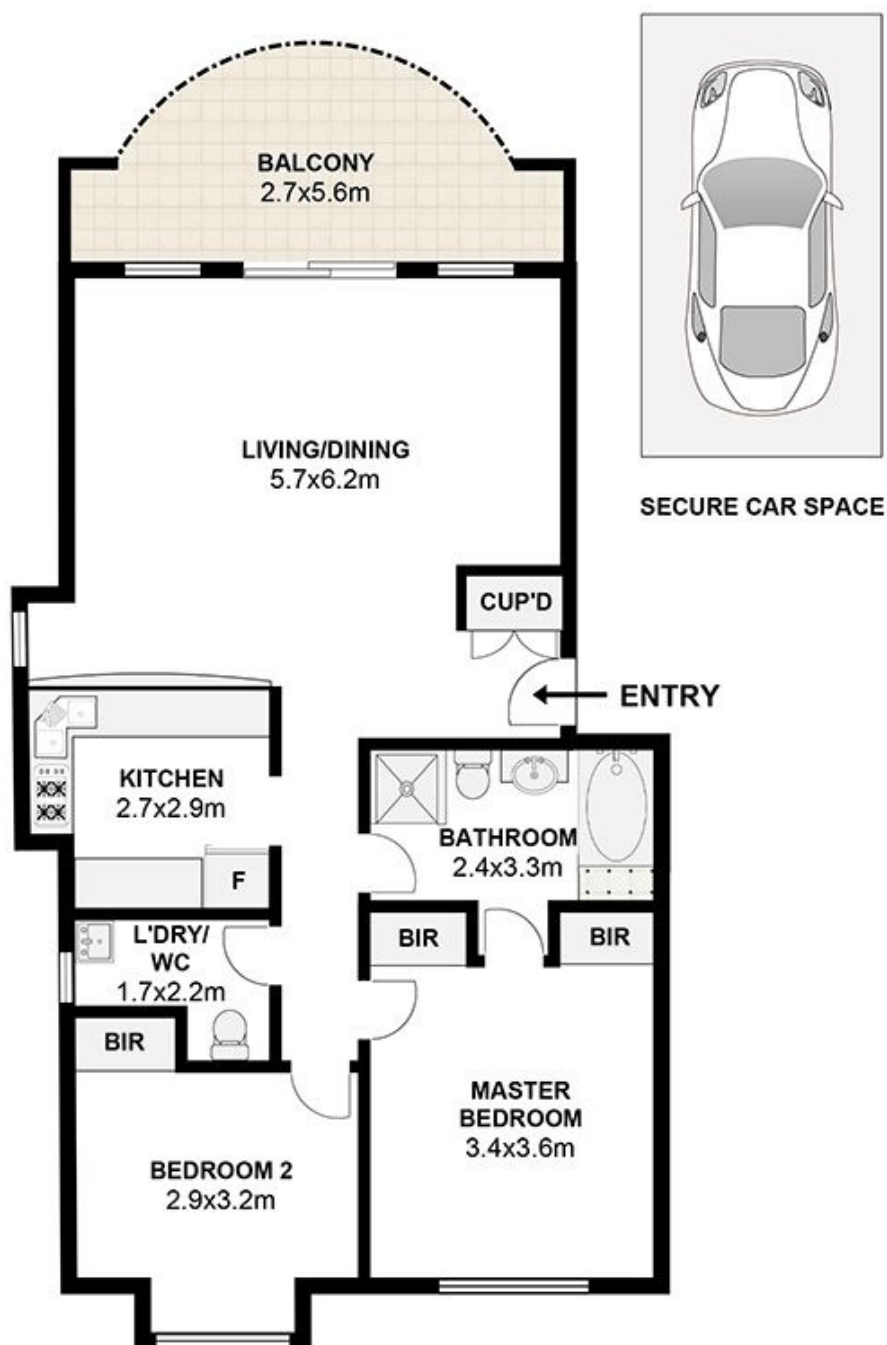
36/68 Courallie Avenue Homebush West NSW

2  1  1 

This modern maisonette style apartment, positioned on the first floor within a modern and stylish building offers an ideal opportunity for first home buyers and investors alike. The light filled interiors, timber floor and north aspect balcony provide the ultimate entertainer's delight - conveniently located within walking distance to public transport, shops, cafes, Strathfield golf course and Sydney markets.

View : <https://www.strathfieldpartners.com.au/sale/nsw/inner-west/homebush-west/residential/apartment/5964070>

- * Two generous bedrooms, both with built-ins
- * Bright and open floor plan that flows effortlessly to the full length, entertainer's balcony
- * Modern kitchen with granite bench tops, gas cooking & dishwasher
- * North aspect, sun lit balcony, timber floorboards
- * Undercover security car space, security intercom



36/68-70 Courallie Ave Homebush West



The following floor plan is shown for presentation purposes only and is not part of any legal document. All measurements and figures are approximate.

