



**STRATHFIELD PARTNERS**  
REAL ESTATE AGENTS



### 7/24 Morwick Street Strathfield NSW

2 1 1

Ideally placed in the heart of Strathfield, across from the tennis courts and only a short stroll to the bustling array of cafes, shops and amenities is this superbly presented unit. Boasting high ceilings and polished timber floors across a versatile floor plan, simply move in.

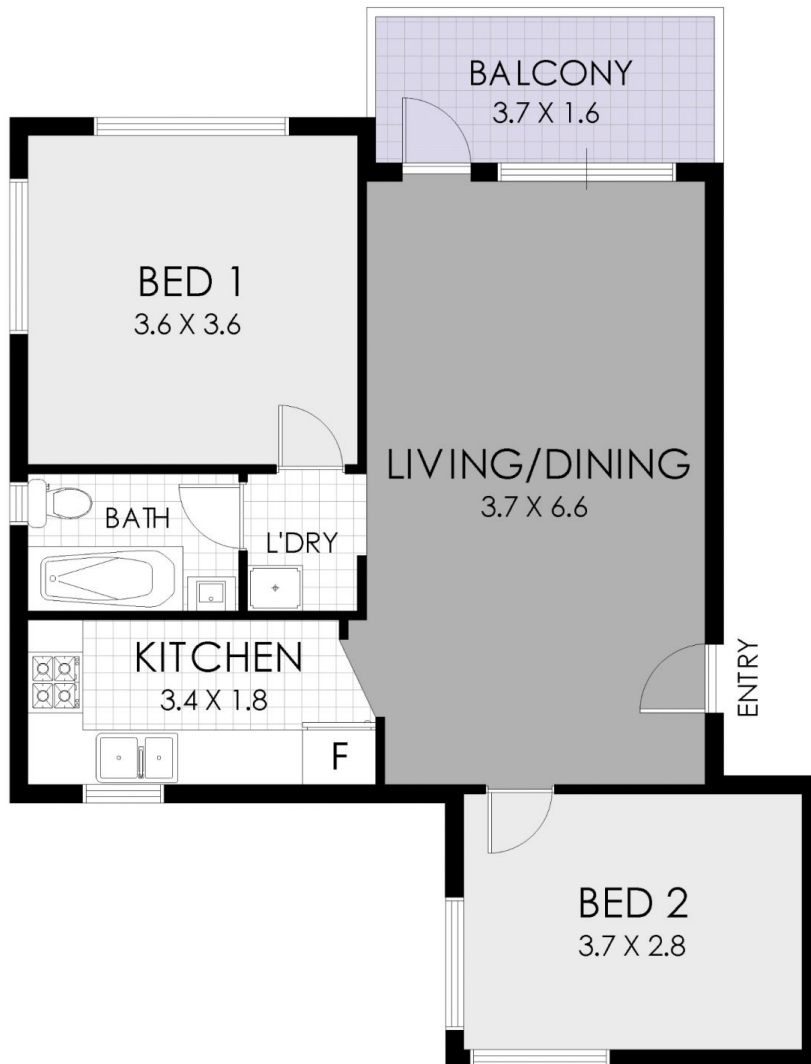
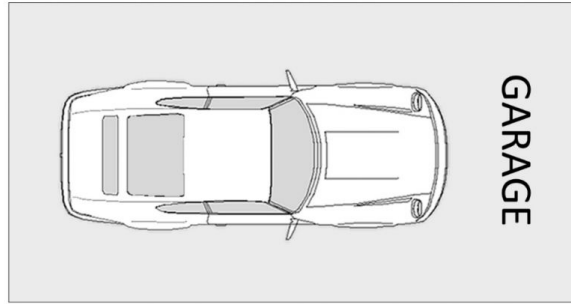
- \* Traditionally spacious apartment in boutique complex
- \* Generous living spaces leading to North facing balcony
- \* Modern kitchen with euro appliances, neat bathroom
- \* Stylish timber flooring & high ceilings throughout
- \* Internal laundry, lock up garage

Disclaimer: We have in preparing this document, used our best endeavours to ensure that all the information contained in this document is true and accurate, but accept no responsibility and disclaim all liability in respect of any errors, omissions, inaccuracies or misstatements contained

**View** : <https://www.strathfieldpartners.com.au/lease/nsw/inner-west/strathfield/residential/apartment/5964116>



**Francis Aidoo-Mensah**  
9763 2277



## FLOOR PLAN



7/24 Morwick street, Strathfield

**WARNING: DISCLAIMER** This information is not to be relied upon. It is strictly used for marketing and illustration purposes only. All measurements are approximate. Not to scale. No liability accepted. You must rely on your own inquiries and seek advice from your solicitor.