



STRATHFIELD PARTNERS
REAL ESTATE AGENTS



2/56 Marsden Road Liverpool NSW

4 🚗 2 🚗 2 🚗

This modern near new three-bedroom townhouse is situated within Marsden residences in the vibrant suburb of Liverpool. Convenience is the key as this house is located just opposite to Marsden Road Public School and within a short stroll to Liverpool Westfield, public transport, shops, local amenities, and parks.

Unfolding 2 appointed level, this abode offers four generous bedroom and spacious living area of 132 sqm and 40sqm northerly aspect courtyard for your outdoor entertaining space. The ground floor features a separate powder room and sleek gas kitchen with stainless steel appliances.

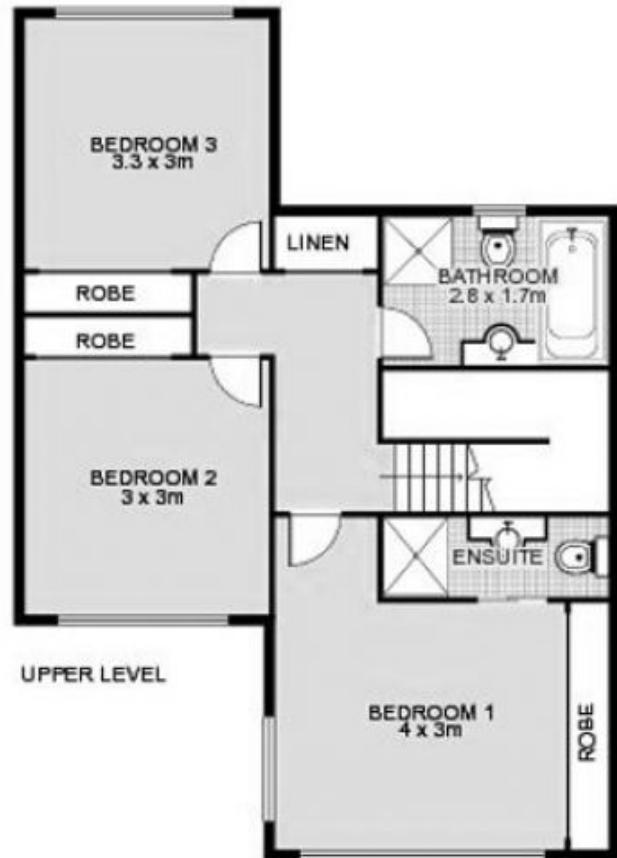
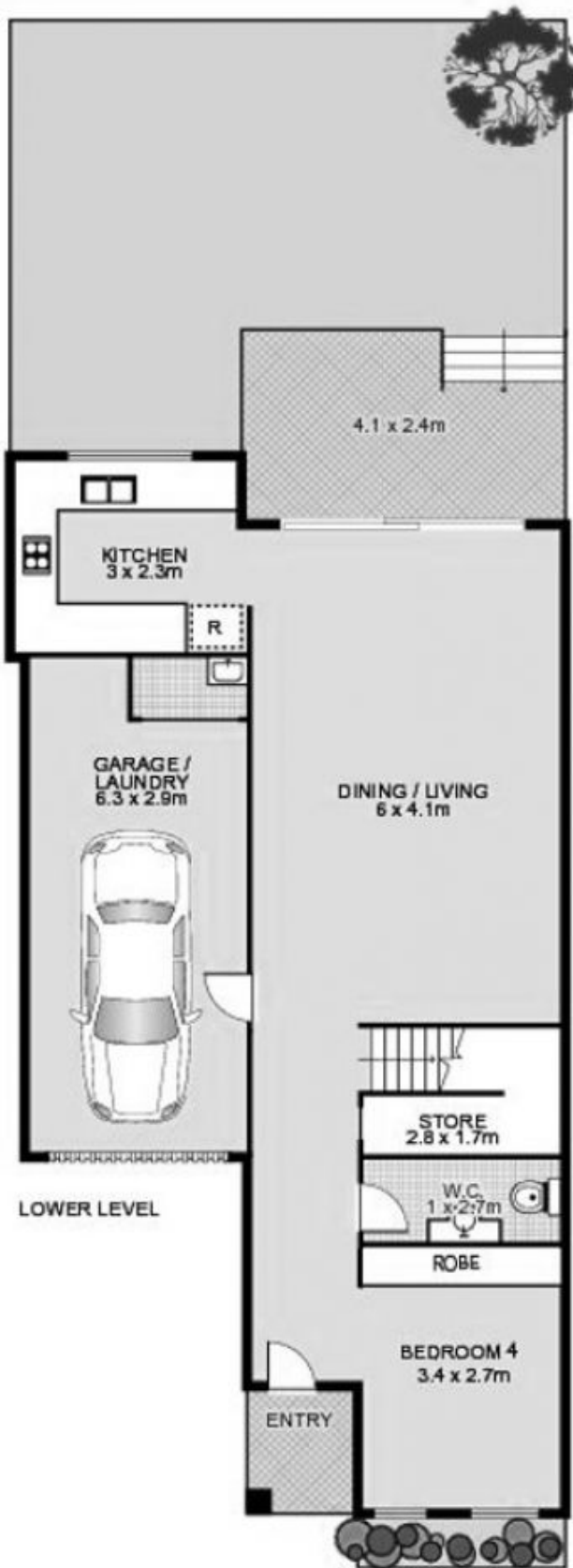
Other highlights include a lock-up tandem garage with internal access, internal laundry and split-system/ducted air conditioning.

View : <https://www.strathfieldpartners.com.au/sale/nsw/liverpool-fairfield/liverpool/residential/townhouse/5964257>

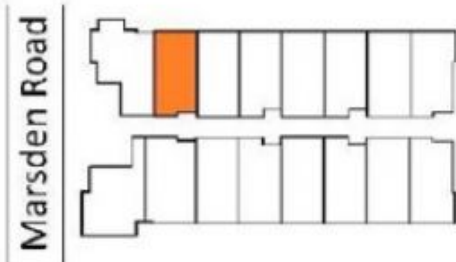


Elie Semrani
9704 0031

Townhouse 2



Internal area: 132sqm
 External area: 40sqm
 Total area: 172sqm
4 Bed | 3 Bath | 2 Car



STRATHFIELD PARTNERS
 REAL ESTATE AGENTS

2/56 Marsden Rd, Liverpool

WARNING: DISCLAIMER This information is not to be relied upon. It is strictly used for marketing and illustration purposes only. All measurements are approximate. Not to scale. No liability accepted. You must rely on your own inquiries and seek advice from your solicitor. Floor plan by cnkplan@cnkplan.com.au / www.cnkplan.com.au