






603/8 Parramatta Road Strathfield NSW

2  2  1 

Architecturally designed to create individual identity for each apartment with most balconies are created as 'winter gardens' and a communal southern courtyard and high level eastern roof terrace, discover Strathfield's newest addition only minutes to local shops, transport hub and amenities.

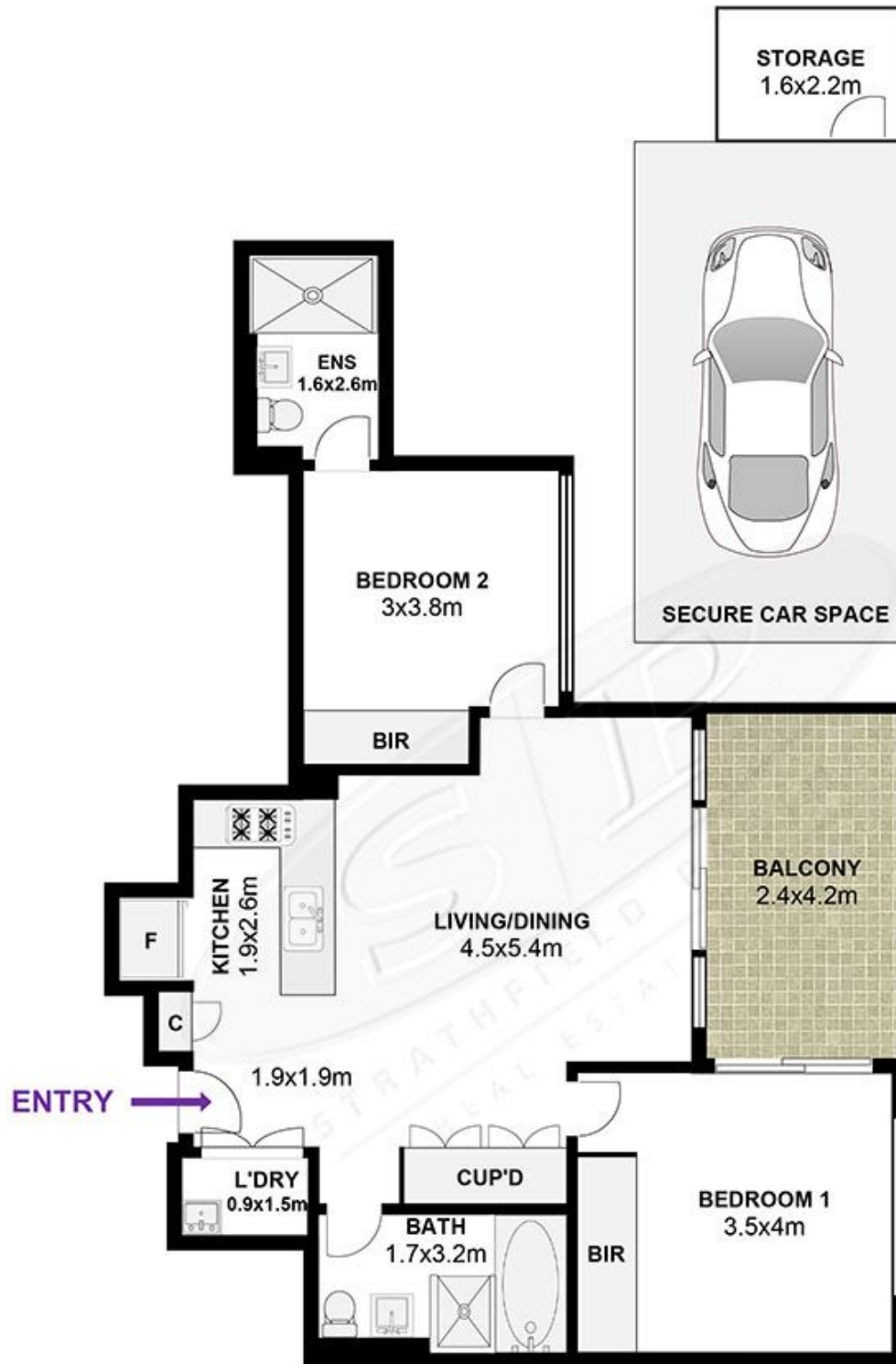
View : <https://www.strathfieldpartners.com.au/lease/nsw/inner-west/strathfield/residential/unit/5964321>



Ada Liu
02 9763 2277

- * Luxury two bedroom apartment
- * High on the 6th floor
- * Large, open and flowing floorplan
- * Superior fittings and finishes
- * Modern inclusions, state of the art appliances
- * Balconies, terraces and courtyards
- * Security parking, intercom, building management
- * Furnished or unfurnished

Disclaimer: We have in preparing this document, used our



603/8 Paramatta Rd Strathfield



Floor plan by DG Life

The following floor plan is shown for presentation purposes only and is not part of any legal document. All measurements and figures are approximate.

