

516/36-44 John Street Lidcombe NSW

2  2  1 

Sold by Gavin Sanna

Presented as new, light and bright, this spectacular architecturally designed apartment has been crafted with comfort and luxury living in mind, setting the benchmark in Lidcombe. Boasting spectacular district views from the huge entertainer's style balcony, SKYPOINT TOWERS is ideally located within walking distance to everything, with Lidcombe's shops, train station, eateries, schools and park at your door step.

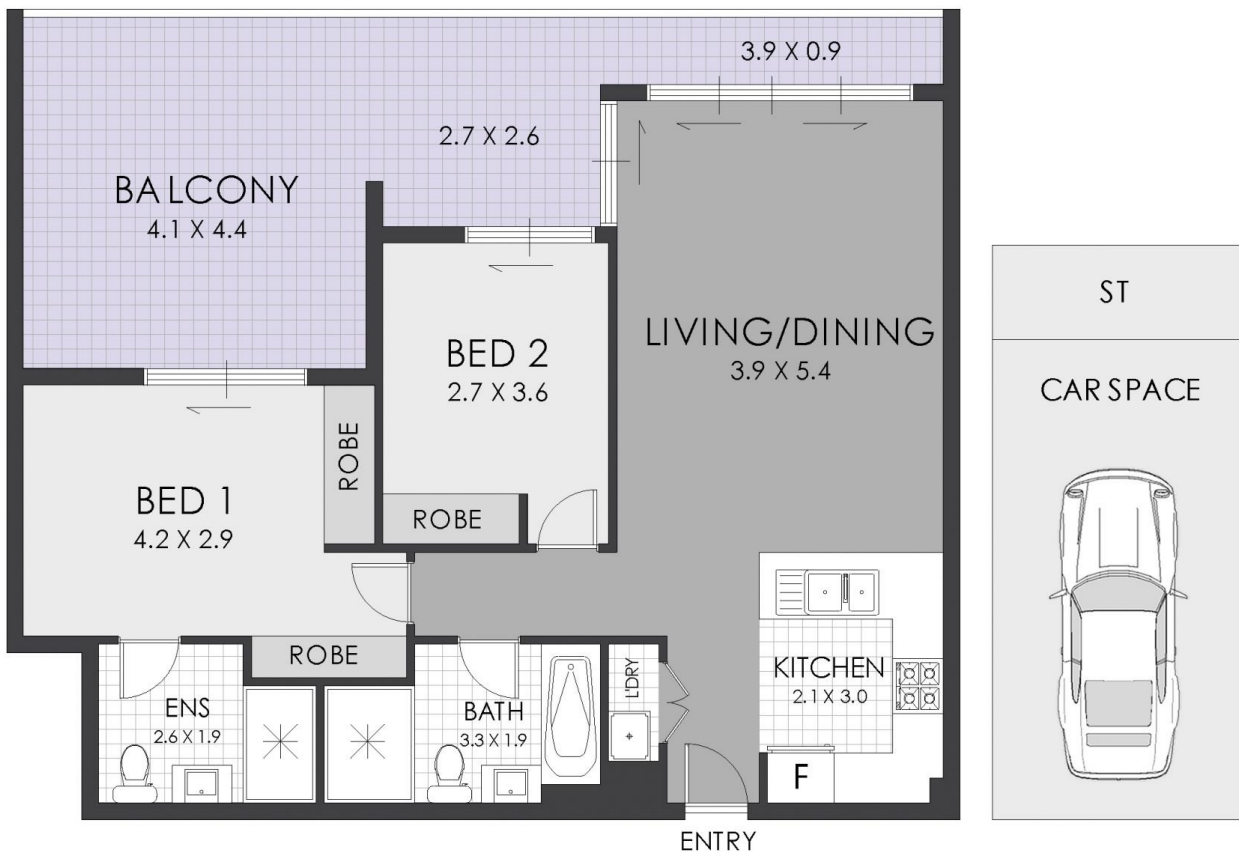
The enormous 119m2 reveals 2 spacious bedrooms with balconies, district views, built in robes, full main bathroom and master bedroom with ensuite bathroom, walk in robe. The fresh and spacious living and dining flows out to a full width balcony ideal for alfresco entertaining.

Other highlights include; roof top views of Sydney city and

Price : \$ 677,000
Building Size : 119 sqm
View : <https://www.strathfieldpartners.com.au/sale/nsw/parramatta/lidcombe/residential/unit/5964662>



Gavin Sanna
02 9704 0027



FLOOR PLAN



STRATHFIELD PARTNERS
REAL ESTATE AGENTS

516/36-44 John Street, Lidcombe

WARNING: DISCLAIMER This information is not to be relied upon. It is strictly used for marketing and illustration purposes only. All measurements are approximate. Not to scale. No liability accepted. You must rely on your own inquiries and seek advice from your solicitor. Floor plan by cnkplan@cnkplan.com.au / www.cnkplan.com.au