

### 39/6-8 George Street Liverpool NSW

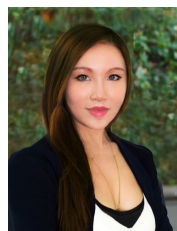
3 2 2

Brimming with natural light and space, this ultra-modern family apartment is crafted located in the heart of Liverpool CBD with quality finishes and low-maintenance features. Quietly positioned on the 6th floor and commanding a prized corner setting, a sense of light and airy openness throughout. All bedrooms are north facing with quality plantation shutters on windows. Enjoy a lifestyle of convenience with walking distance to Uni, Cafes and Restaurants, This distinguished 3 bedroom apartment is just waiting to be filled with the happy sounds of a family.

Other features include:

- \* Complete with furniture (optional)
- \* Built in wardrobes to all three bedrooms
- \* Ensuite to the main bedroom
- \* Laundry including dryer and washing machine
- \* Balcony

**View :** <https://www.strathfieldpartners.com.au/lease/nsw/liverpool-fairfield/liverpool/residential/unit/5964693>



**Chelsea Wang**  
 0433 332 565