



### 306/2A Elsie Street Burwood NSW

2  2  1 

Situated in the revered "Lighthouse" building in the heart of Burwood, this nearly new apartment offers fresh modern living with the city centre at your doorstep. With only five apartments per floor, you'll enjoy the spacious 101 sqm size with indoor and outdoor living areas. The communal rooftop garden offers breath taking city views of Sydney and the Harbour Bridge.

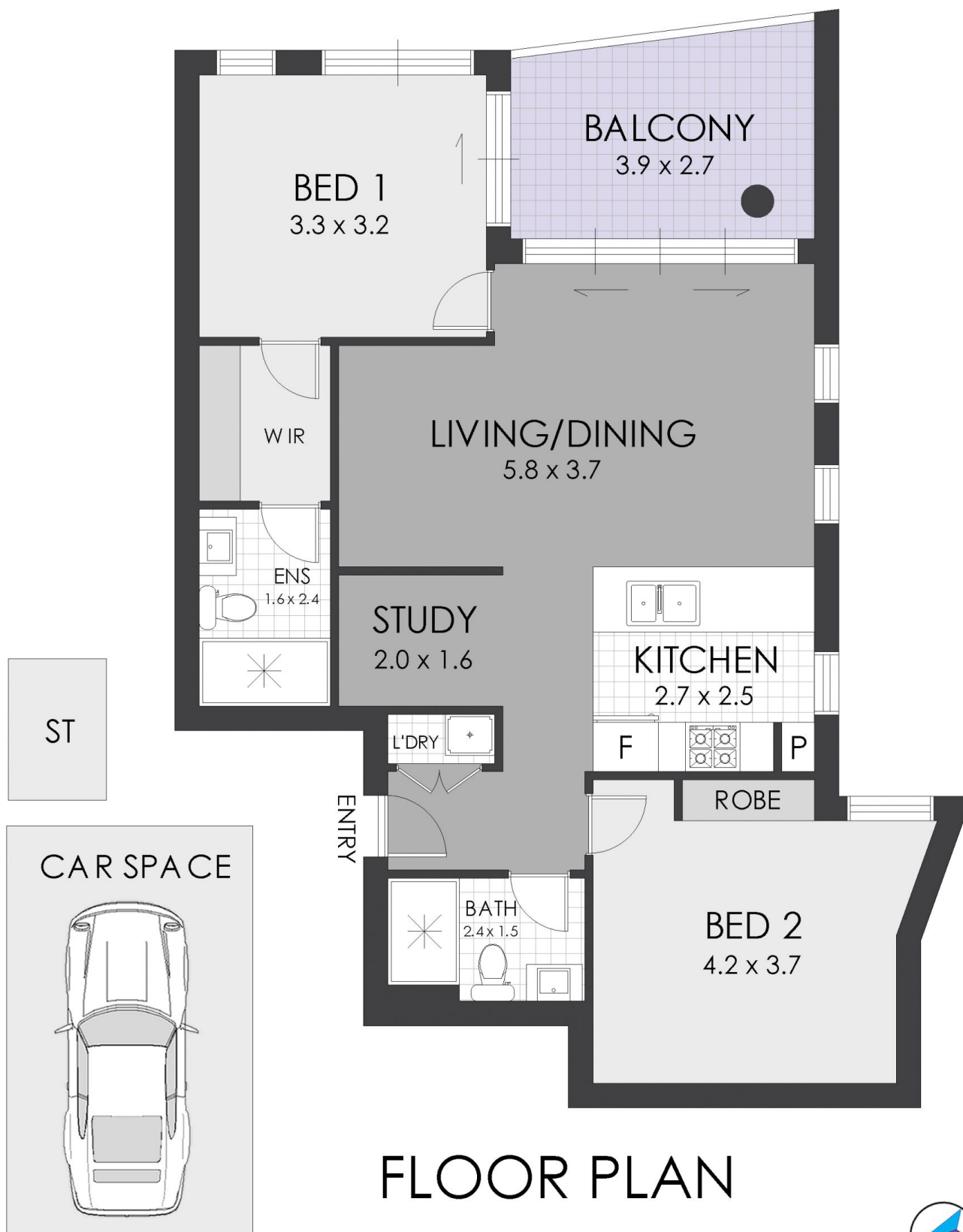
#### Highlights include:

- Generous open plan lounge and dining area plus study.
- Spectacular Sydney City views from rooftop gardens
- High quality kitchen finishes including breakfast bar, stone benches and mirrored splashbacks
- Bathrooms finished with floor-to-ceiling tiles and vanity walls, enhanced by timber and Caesarstone accents
- East facing balcony
- Well-appointed bedrooms with built in wardrobes

**Price** : \$1,050,000 - \$1,060,000 - Inspect by appointment  
**Building Size** : 101 sqm  
**View** : <https://www.strathfieldpartners.com.au/sale/nsw/inner-west/burwood/residential/apartment/5964695>



**Gavin Sanna**  
02 9704 0027



## FLOOR PLAN



**STRATHFIELD PARTNERS**  
REAL ESTATE AGENTS

# 306/2A Elsie Street, Burwood

**WARNING: DISCLAIMER** This information is not to be relied upon. It is strictly used for marketing and illustration purposes only. All measurements are approximate. Not to scale. No liability accepted. You must rely on your own inquiries and seek advice from your solicitor. Floor plan by [cnkplan@cnkplan.com.au](mailto:cnkplan@cnkplan.com.au) / [www.cnkplan.com.au](http://www.cnkplan.com.au)