



STRATHFIELD PARTNERS
REAL ESTATE AGENTS



SHOP 38/498-502 Woodville Road Guildford NSW

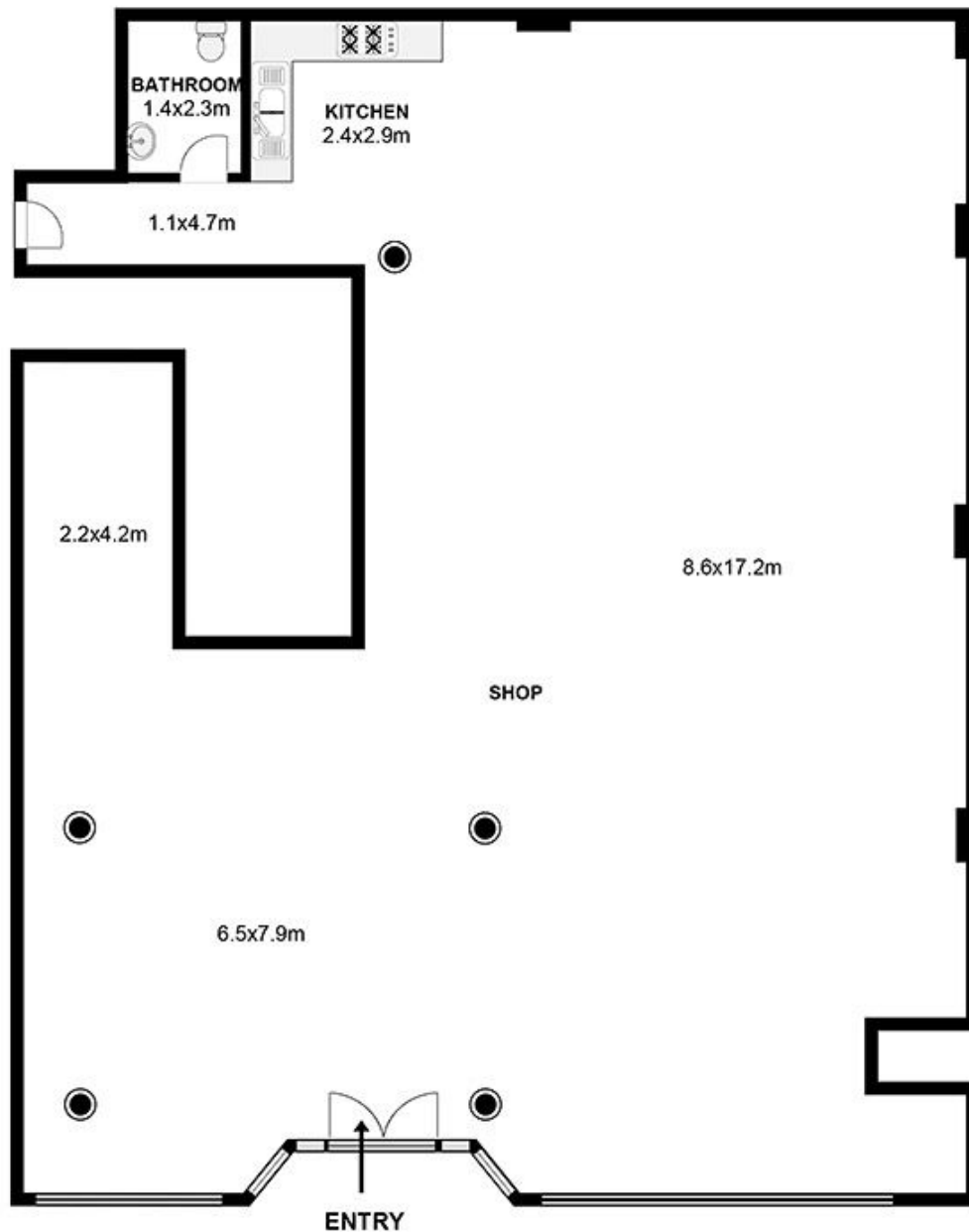
Offering a choice of ultra contemporary retail shops that are perfectly suited to the small business owner, these stylish properties are well positioned to fully engage the significantly high volume of passing traffic.

- * Commercial/residential complex
- * Undercover parking, versatile
- * Flexible terms and conditions
- * Designed for a variety of uses
- * Gas kitchen, bathroom amenities

Building Size : 237 sqm
View : <https://www.strathfieldpartners.com.au/lease/nsw/parramatta/guildford/commercial/retail/5968027>



Fabrizio Pignataro
9704 0018



Total Internal Area - approx. 212 Sqm



Shop 38/498-502 Woodville Road Guildford

Floor plan by DG Life

The following floor plan is shown for presentation purposes only and is not part of any legal document. All measurements and figures are approximate.

