



STRATHFIELD PARTNERS
REAL ESTATE AGENTS



1A Morris Street Summer Hill NSW

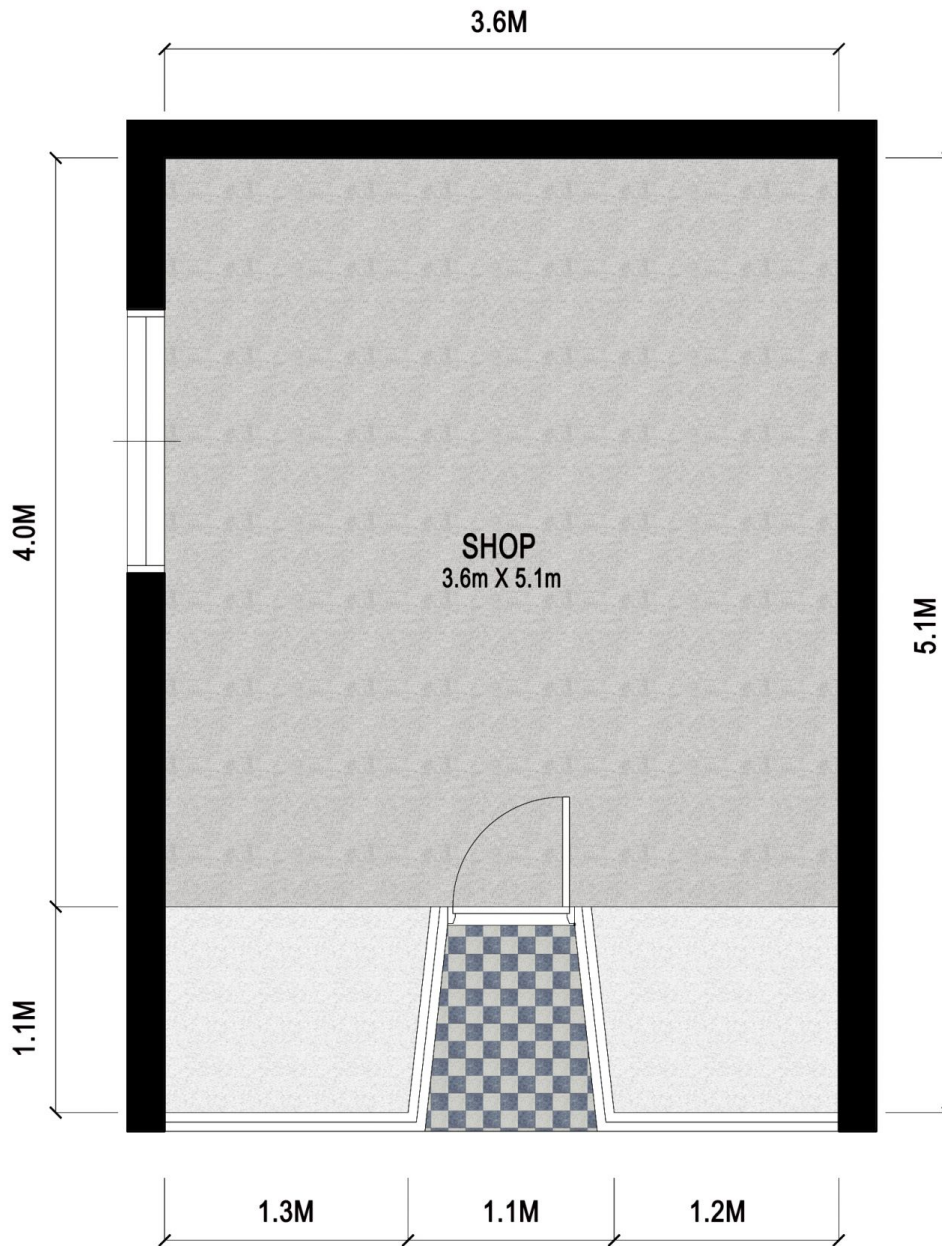
Conveniently placed in the cultural centre of what is unquestionably one of Sydney's hippest and most popular suburbs, this intimate retail opportunity is an exciting proposition for the boutique business owner.

- * Stylish floorboards
- * Glass shop front
- * Suitable for Retail or Office use
- * Traditional character shopfront
- * Flexible conditions and terms
- * Merely metres to the station
- * Secure, approximately 20.1 sqm
- * Prominent pedestrian visibility

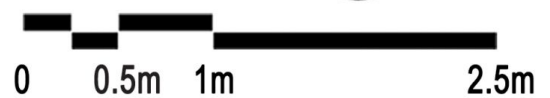
Building Size : 20.1 sqm
View : <https://www.strathfieldpartners.com.au/ease/nsw/inner-west/summer-hill/commercial/retail/5968069>



Fabrizio Pignataro
9704 0018



AREA 20.1m²



Shop 1A/1 Morris Street, Summer Hill

The floor plan is shown for view purposes only and is not part of any legal document. All measurements and figures are approximate and not to scale.
Floor plan by C&K PLAN / www.cnkplan.com.au