



**STRATHFIELD PARTNERS**  
REAL ESTATE AGENTS



### G/18 Gilpin Street Camperdown NSW

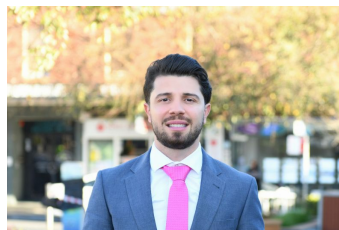
1 

Conveniently located close to King Street, Newtown - with trendy cafes, restaurants and amenities, this studio apartment is a great opportunity for students and young professionals to live in a ideal location, close to the Sydney CBD and amenities.

Features include modern kitchenette, bathroom and wardrobe; common laundry, floor boards, larger kitchen/dining area.

Disclaimer: We have in preparing this document, used our best endeavours to ensure that all the information contained in this document is true and accurate, but accept no responsibility and disclaim all liability in respect of any errors, omissions, inaccuracies or misstatements contained in this document. Prospective tenants should make their

**View** : <https://www.strathfieldpartners.com.au/lease/nsw/inner-west/camperdown/residential/studio/597013>  
2



**Jason Milosevski**  
0475 601 782