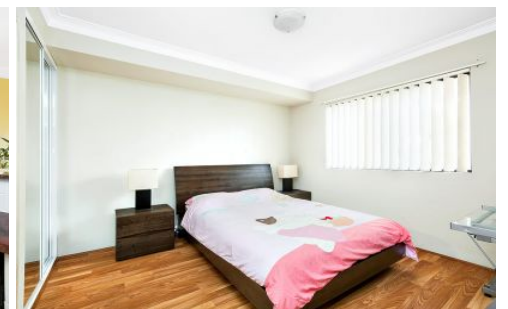




**STRATHFIELD PARTNERS**  
REAL ESTATE AGENTS



### 36/68 Courallie Avenue Homebush West NSW

2 1 1

This modern Maisonette-style apartment is set on 1st level within a secure building that is stylish & contemporary. Together with light filled interiors, timber floor and north aspect balcony. Enjoy the convenience - short walk to public transport, shops, cafes, golf course and Sydney markets.

**View :** <https://www.strathfieldpartners.com.au/lease/nsw/inner-west/homebush-west/residential/apartment/5972313>

#### Features include:

- \* Bright open plan living and dining area
- \* Kitchen with granite bench tops, gas cooking & dishwasher
- \* North Aspect, Timber Floor board
- \* Two bedrooms, both with built-ins
- \* Generous full length balcony
- \* Internal laundry with toilet
- \* Undercover security car space
- \* Secure intercom access unit

<https://www.strathfieldpartners.com.au>