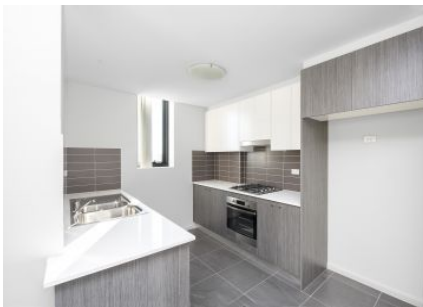




STRATHFIELD PARTNERS
REAL ESTATE AGENTS



44/6-8 George Street Liverpool NSW

3 2 2

Perfectly positioned less than five minutes' walk to Liverpool Westfield and a myriad of local schools, public transport, parks and amenities, this ultra modern VOGUE apartment offers a versatile floorplan with light filled interiors and premium appointments throughout.

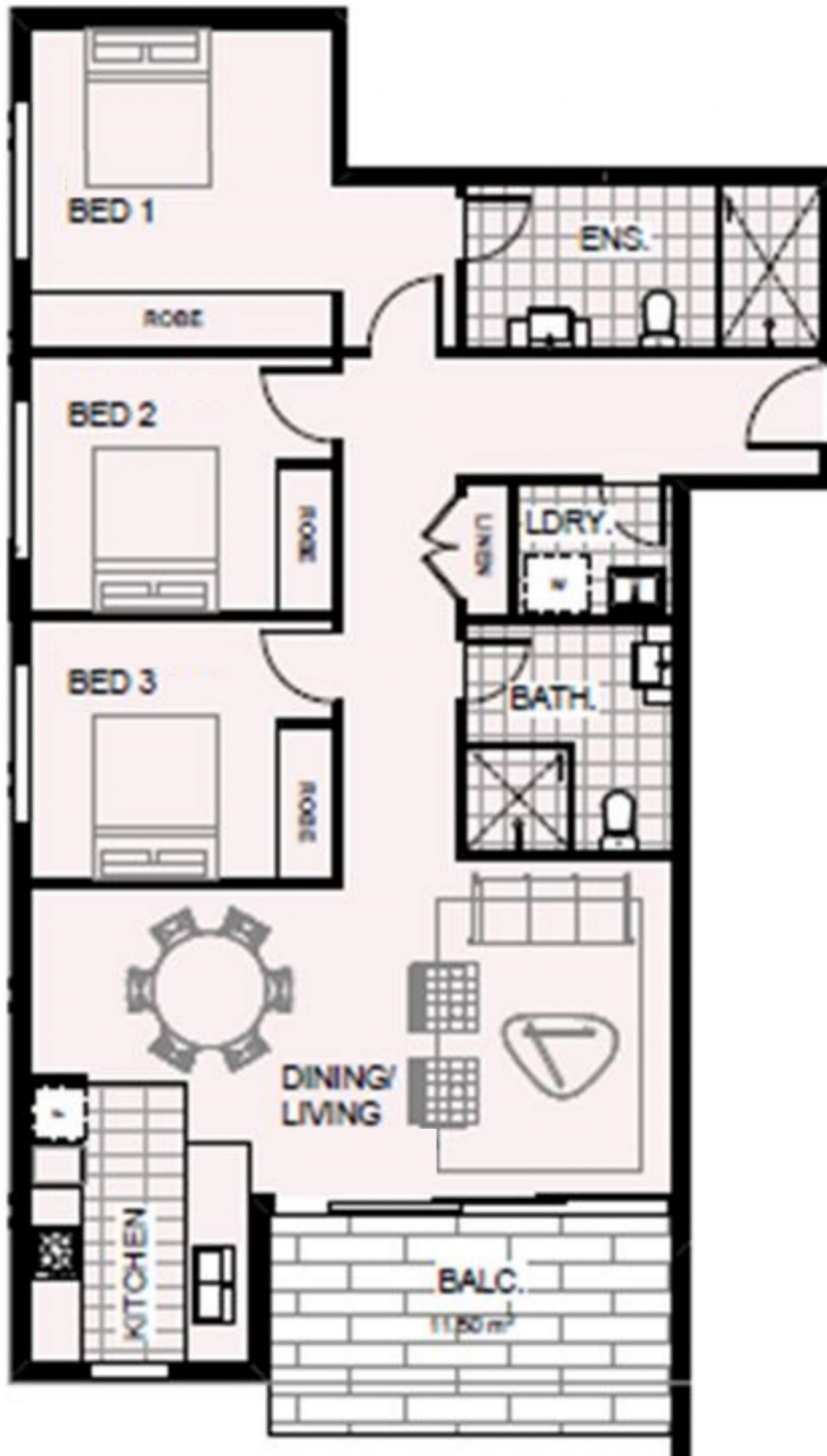
View : <https://www.strathfieldpartners.com.au/lease/nsw/liverpool-fairfield/liverpool/residential/apartment/5972627>

- * Luxury Vogue Apartment
- * Air conditioned living area adjoining balcony
- * Gourmet gas kitchen with breakfast bar
- * Concealed laundry, secure intercom, basement parking

- * Liverpool Westfield - 4 minute walk
- * Liverpool Girls High School - 6 minute walk
- * Liverpool Hospital - 8 minute walk
- * Liverpool Public School - 12 minute walk
- * Liverpool Train Station - 13 minute walk



Lisa Baker
02 9763 2277



STRATHFIELD PARTNERS
REAL ESTATE AGENTS

WARNING: DISCLAIMER This information is not to be relied upon. It is strictly used for marketing and illustration purposes only. All measurements are approximate. Not to scale. No liability accepted. You must rely on your own inquiries and seek advice from your solicitor.