



## 1103/29 Morwick Street Strathfield NSW

2  2  1 

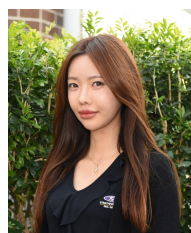
Perfectly positioned in the heart of Strathfield in the highly sought after, Morwick Street is this luxury style apartment with panoramic views and premium finishes.

- \* Ultra modern penthouse apartment
- \* Premium Euro appointed gas kitchen with s/s appliances
- \* Spacious balcony with open outlook
- \* Ducted air conditioning, basement parking, intercom, lift facilities
- \* Located directly next to Strathfield tennis court & eateries
- \* Merely steps to Strathfield Station and amenities

Ideally placed, merely steps to Strathfield's abundant array of eateries, retail options, elite schools and public transport.

Disclaimer: We have in preparing this document, used our best endeavours to ensure that all the information

**View :** <https://www.strathfieldpartners.com.au/lease/nsw/inner-west/strathfield/residential/apartment/5972719>



**Dayna Hwang**  
9704 0003



**Fabrizio Pignataro**  
9704 0018