



STRATHFIELD PARTNERS
REAL ESTATE AGENTS



18/27 Bennelong Parkway Wentworth Point NSW

2 2 1

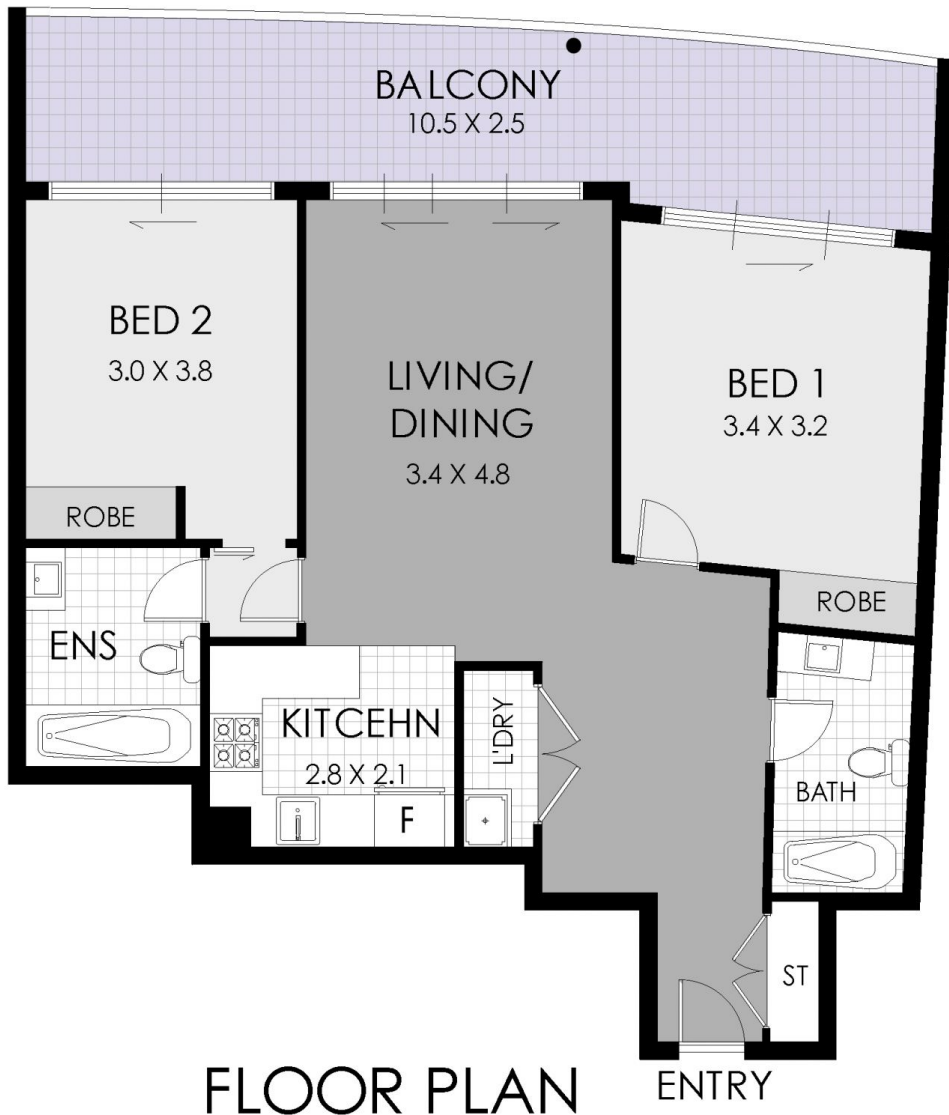
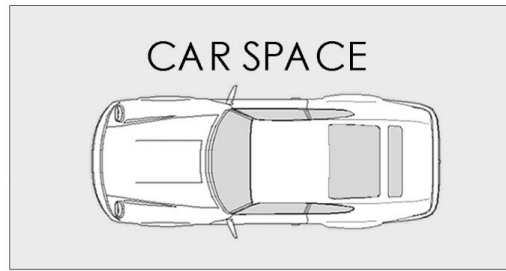
Commanding a direct waterfront position within the highly sought after Mariners Cove, this stunning entertainer offers an expansive floorplan and embraces amazing water views to Rhodes and Olympic Park panoramas. This luxury retreat boasts the perfect balance of in and outdoor space with balcony access and spectacular views from both bedrooms and open plan living area.

View : <https://www.strathfieldpartners.com.au/lease/nsw/inner-west/wentworth-point/residential/apartment/5972771>

Ideally placed in the thriving heart of Wentworth Point, surrounded by picturesque parks, waterside, cycling and walking paths as well as shops, cafes and transport.

- * Ultra modern waterfront Mariners Cove apartment
- * Gourmet stone kitchen with gas cooking and s/s appliances
- * Stunning floating flooring throughout
- * Modern & chic euro style updated bathroom

<https://www.strathfieldpartners.com.au>



STRATHFIELD PARTNERS
REAL ESTATE AGENTS

18/27 Bennelong Parkway, Wentworth Point

WARNING: DISCLAIMER This information is not to be relied upon. It is strictly used for marketing and illustration purposes only. All measurements are approximate. Not to scale. No liability accepted. You must rely on your own inquiries and seek advice from your solicitor. Floor plan by cnkplan@cnkplan.com.au / www.cnkplan.com.au