



26/6-8 The Crescent Homebush NSW

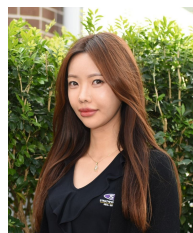
3 2 2

Nestled high on the top floor with leafy, open views across Burlington Road is this townhouse style, penthouse with two levels of living. Will delight in the double height ceilings with expansive open plan living area that flow to the covered outdoors - perfectly placed in the heart of Homebush, within easy walking distance to both Strathfield and Homebush station and amenities.

- * Impressive townhouse layout over 150sqm approx
- * Cathedral height ceilings, polished flooring throughout
- * Ultra modern kitchen with breakfast bar
- * Three large bedrooms, one with balcony access
- * Boutique complex, lift access, basement parking

Lifestyle Location: convenient central position, footsteps to train station, village shops, cafes, schools, library and transportation.

View : <https://www.strathfieldpartners.com.au/lease/nsw/inner-west/homebush/residential/apartment/5972782>



Dayna Hwang
 9704 0003