



STRATHFIELD PARTNERS
REAL ESTATE AGENTS



Office 3/ 58 The Boulevard Strathfield NSW

This modern office space is located amongst everything Strathfield has to offer within a short stroll to The Plaza and its abundance of shops and cafes. Commuting is made easy being situated a stones throw from Strathfield Railway Station, 2 minutes from the M4 and 15 minutes from the City.

These premises features:

- Air Conditioning
- Part partitioned layout
- Area of 73 SQM
- Modern finishes
- Existing reception

All of the ingredients are here for business success and happy employees.

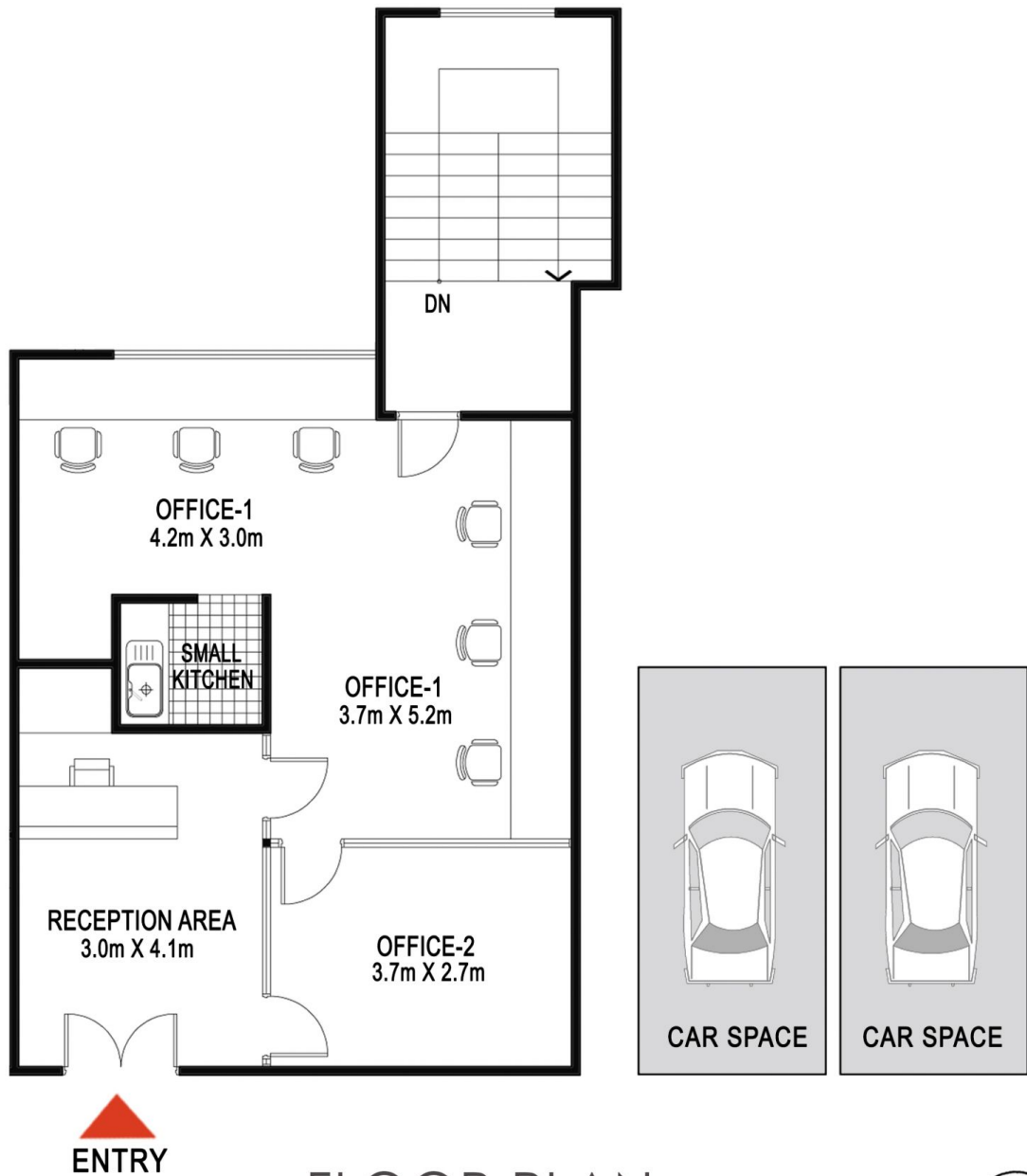
Building Size : 73 sqm
View : <https://www.strathfieldpartners.com.au/ease/nsw/inner-west/strathfield/commercial/offices/5974030>



Helen Chai
9704 0043



Cornelia Day
0410 653 374



FLOOR PLAN



APPROX. AREA SIZE	
Internal area	58.9 sqm
Carspace	24 sqm
Total area	82.9 sqm



Suite 3/58 The Boulevard, Strathfield

The floor plan is shown for view purposes only and is not part of any legal document. All measurements and figures are approximate and not to scale.
Floor plan by CNK PLAN / www.cnkplan.com.au