






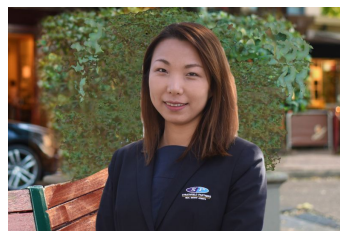
82/1-3 Beresford Road Strathfield NSW

2  2  2 

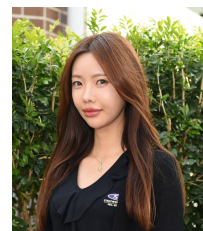
High on the 8th floor with sweeping area views is this super spacious 'Strathbelle' Apartment with a large, open floor plan and modern interiors - all this and more, merely a short walk to Strathfield Station, shops and amenities.

View : <https://www.strathfieldpartners.com.au/lease/nsw/inner-west/strathfield/residential/apartment/5975561>

- * Modern Strathbelle unit, 2 bedrooms with built-in robes
- * Large master suite with en-suite and balcony access
- * Spacious open plan living area
- * Covered entertainers balcony with open views
- * Granite kitchen with dishwasher and gas cooking
- * Two modern bathrooms, internal laundry, ducted air-con
- * 2 security car spaces, intercom, elevators
- * Complex heated pool, spa and sauna facilities



Namhee (ellie) Kim
9704 0001



Dayna Hwang
9704 0003

Disclaimer: We have in preparing this document, used our best endeavours to ensure that all the information