



**STRATHFIELD PARTNERS**  
REAL ESTATE AGENTS



**903/23-25 Churchill Avenue Strathfield NSW**

1 1 1

Ideally placed within a lifestyle location, merely a few steps to Strathfield Plaza, trendy eateries and amenities, this brand new apartment in the esteemed HAZJ complex, offering a versatile floor plan with premium appointments and finishes.

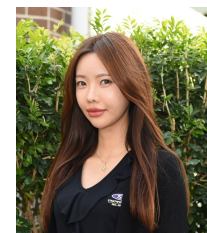
- \* Stunning interiors with premium fittings & finishes
- \* Gourmet gas kitchen with stone benches
- \* Internal laundry
- \* Secure complex with basement parking and intercom

Disclaimer: We have in preparing this document, used our best endeavours to ensure that all the information contained in this document is true and accurate, but accept no responsibility and disclaim all liability in respect of any errors, omissions, inaccuracies or misstatements contained

**View :** <https://www.strathfieldpartners.com.au/lease/nsw/inner-west/strathfield/residential/apartment/5989363>



**Namhee (ellie) Kim**  
9704 0001



**Dayna Hwang**  
9704 0003