



**STRATHFIELD PARTNERS**  
REAL ESTATE AGENTS



### 29 Sydney Street North Strathfield NSW

Investors, Builders and Developers take note! This well presented block of units currently comprises 4 units with excellent scope for future remodelling, renovations or addition at the rear - STCA. Nestled on a generous block of 514sqm with rear land access, within walking distance to North Strathfield and Strathfield Station, local amenities and transport.

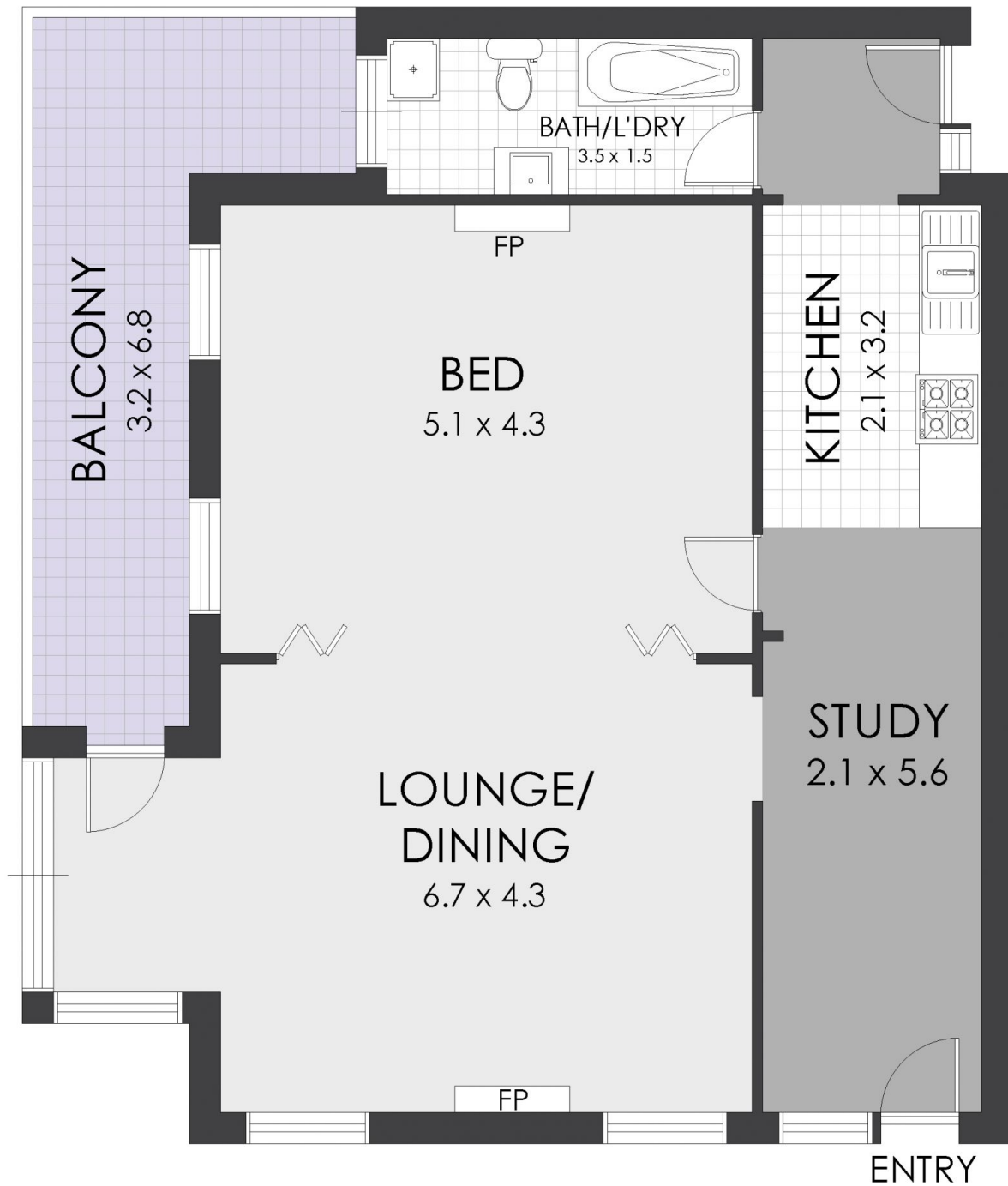
- \* Block of 4 units, 523m2 land
- \* Rear space for 4 cars or potential future extension STCA
- \* Current rental income \$66,560pa approx.
- \* Convenient setting within walking distance to North Strathfield and Strathfield station

Lifestyle location: Within mere steps to Strathfield railway station, local eateries, shops and amenities.

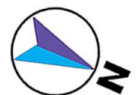
**Price** : Contact Agent  
**Land Size** : 523 sqm  
**View** : <https://www.strathfieldpartners.com.au/sale/nsw/inner-west/north-strathfield/commercial/development/6017891>



**Vanessa Kim**  
9704 0009



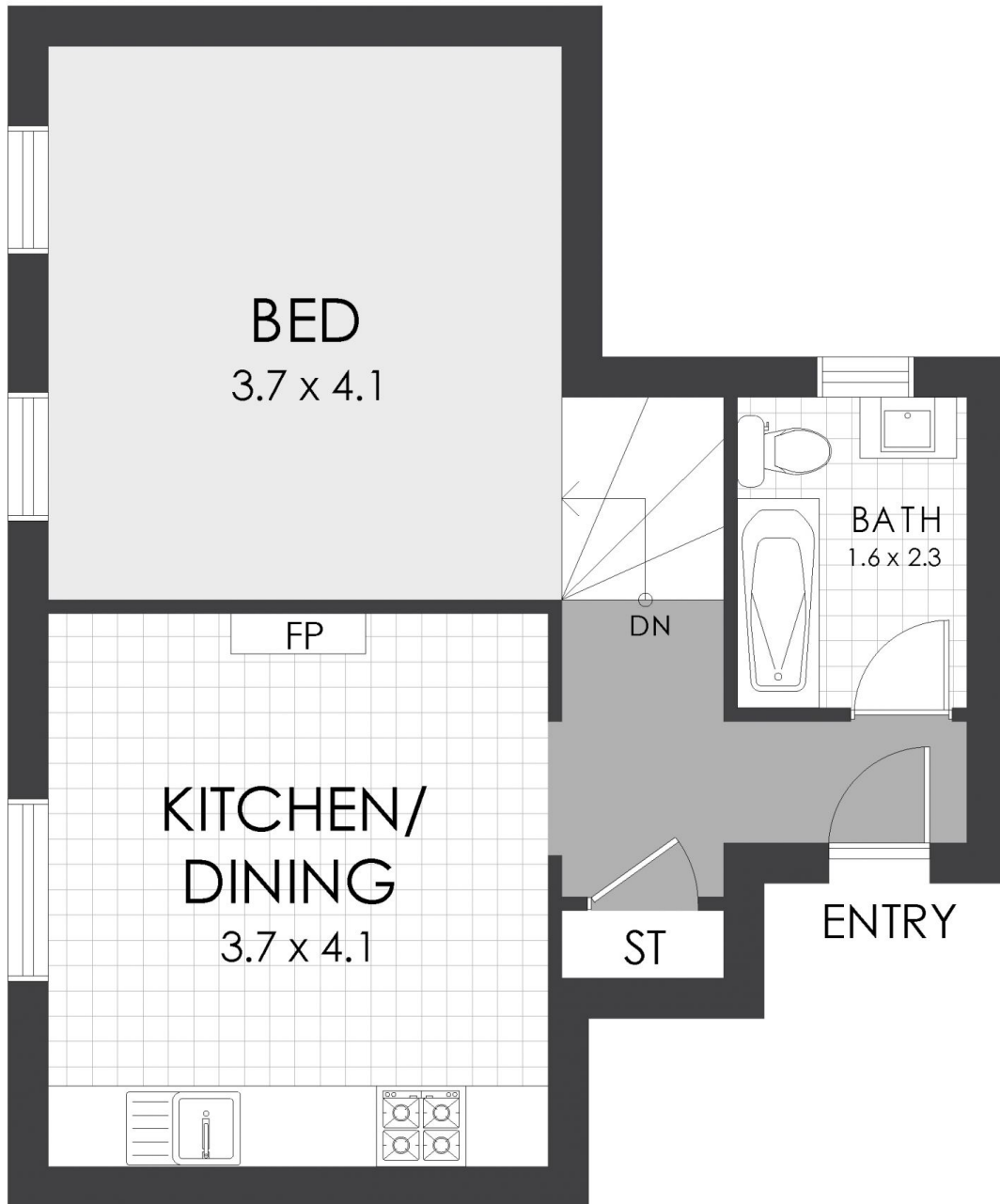
# FLOOR PLAN



**STRATHFIELD PARTNERS**  
REAL ESTATE AGENTS

1/29 Sydney Street, North Strathfield

**WARNING: DISCLAIMER** This information is not to be relied upon. It is strictly used for marketing and illustration purposes only. All measurements are approximate. Not to scale. No liability accepted. You must rely on your own inquiries and seek advice from your solicitor. Floor plan by [cnkplan@cnkplan.com.au](mailto:cnkplan@cnkplan.com.au) / [www.cnkplan.com.au](http://www.cnkplan.com.au)



# FLOOR PLAN



STRATHFIELD PARTNERS  
REAL ESTATE AGENTS

4/29 Sydney Street, North Strathfield

**WARNING: DISCLAIMER** This information is not to be relied upon. It is strictly used for marketing and illustration purposes only. All measurements are approximate. Not to scale. No liability accepted. You must rely on your own inquiries and seek advice from your solicitor. Floor plan by [cnkplan@cnkplan.com.au](mailto:cnkplan@cnkplan.com.au) / [www.cnkplan.com.au](http://www.cnkplan.com.au)