



STRATHFIELD PARTNERS
REAL ESTATE AGENTS



1/12 Churchill Avenue Strathfield NSW

Located in Symond Arcade, is this 37.8sqm office on level one which would suit a variety of businesses.

Perfectly located in the heart of Strathfield, close to other shops, schools and Strathfield train station.

Call to inspect today!

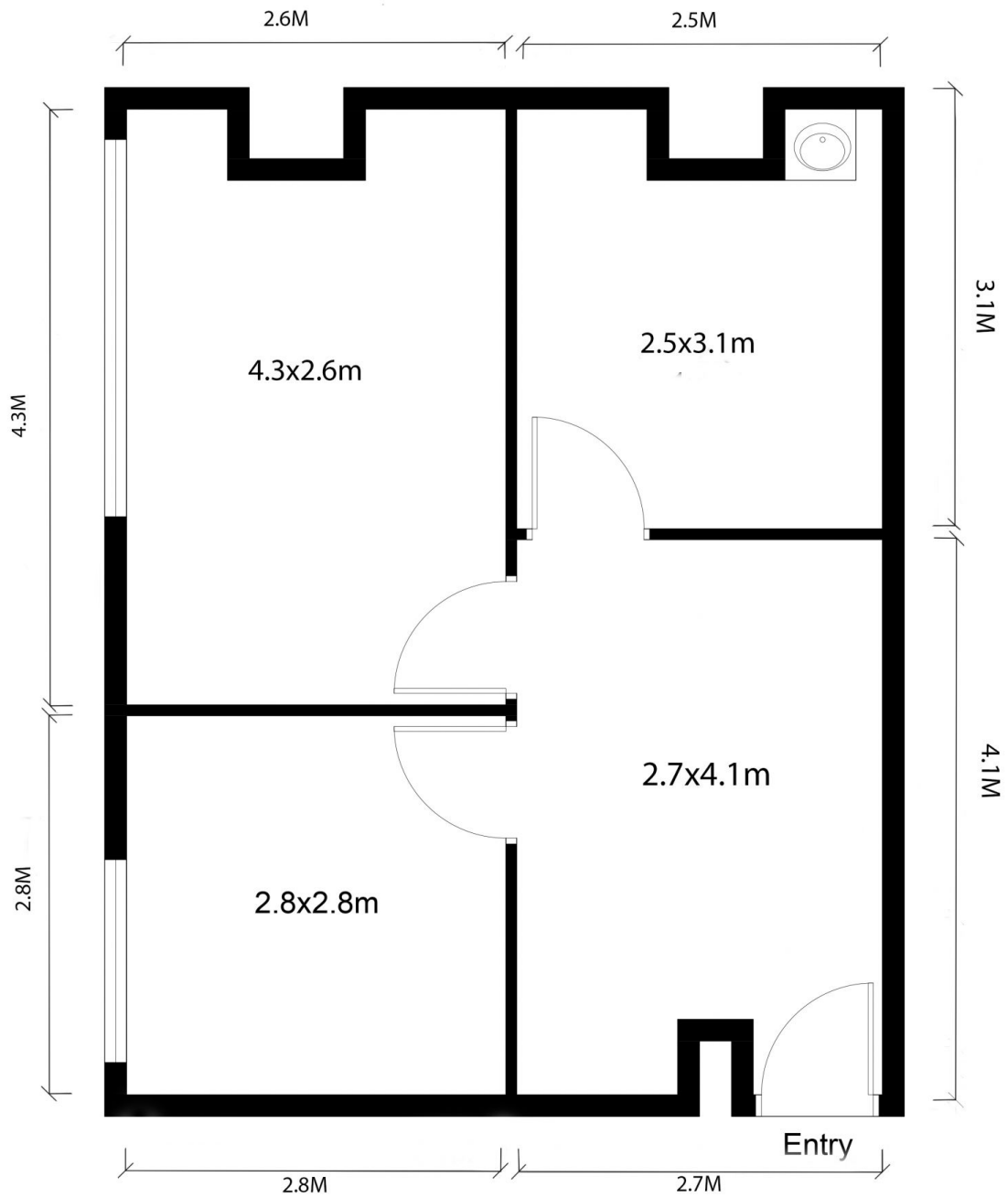
Building Size : 37.8 sqm
View : <https://www.strathfieldpartners.com.au/lease/nsw/inner-west/strathfield/commercial/offices/6211880>



Fabrizio Pignataro
9704 0018



Ali Tarawalle
0435 714 767



FLOOR PLAN

APPROX. AREA SIZE
Internal area 37.8sqm



STRATHFIELD PARTNERS
REAL ESTATE AGENTS

Office 1/12 Churchill Ave, Strathfield

Floor plan, furniture, and fixture measurements and dimensions are approximate and are for illustrative purposes only. Strathfield Partners gives no guarantee, warranty or representation as to the accuracy and completeness of the floor plan.