



Level LL/186-192 Canterbury Road Canterbury NSW

Strathfield Partners are proud to offer a rare opportunity to lease these multi-use premises. Positioned on the 1st floor fronting Canterbury Rd and with rear access to Minter St. Great space for car mechanics, automotive workshop, spare parts retailer or general workshop for electrical or hybrid vehicles.

- ? Great Storage or Warehouse space
- ? Approx. 184m2 (Pt 6)
- ? Convenient location with rear access from Minter Street
- ? Walking distance to train, bus and major arterial roads
- ? Kitchen and bathroom facilities
- ? Multiple Uses

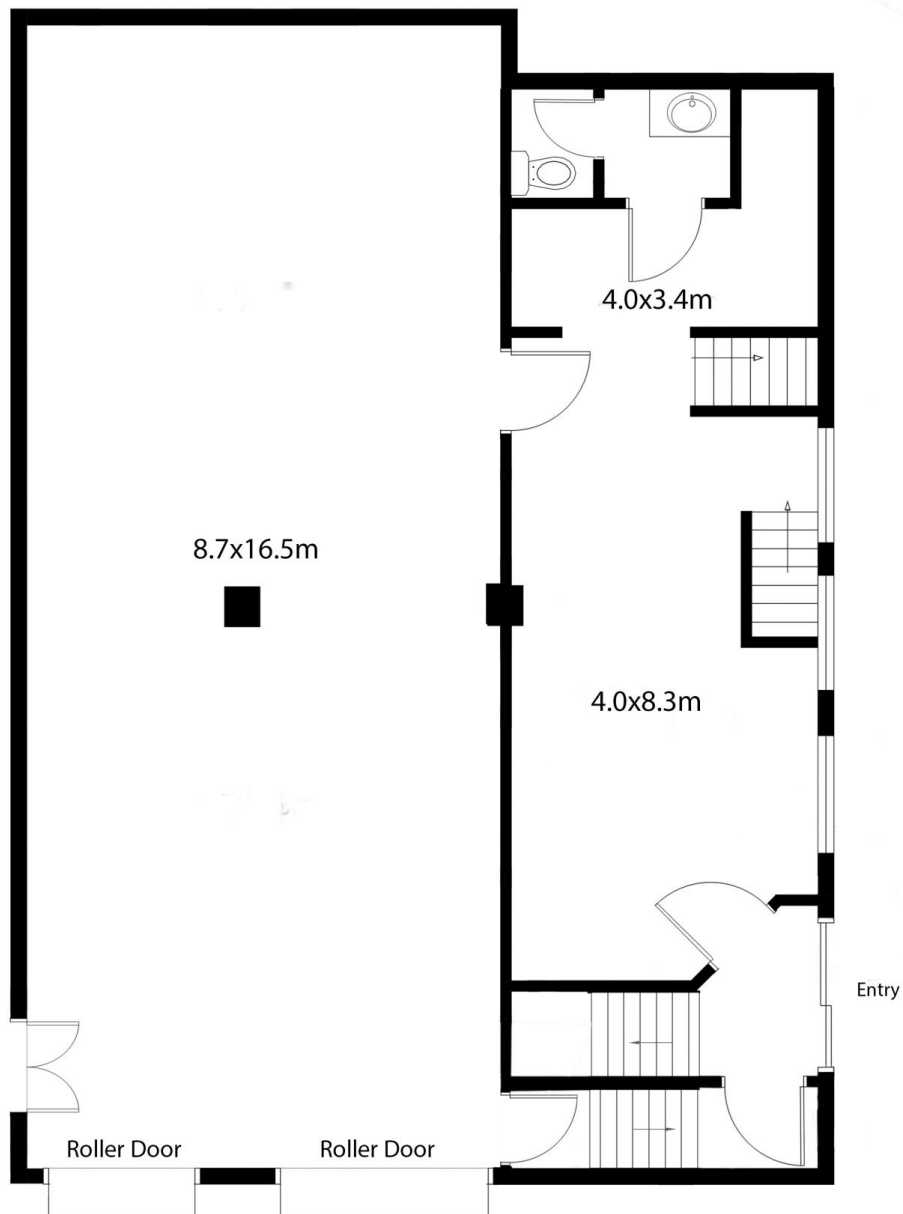
Building Size : 184 sqm
View : <https://www.strathfieldpartners.com.au/lease/nsw/canterburybankstown/canterbury/commercial/industrial/6355137>



Helen Chai
9704 0043



Cornelia Day
0410 653 374



FLOOR PLAN
Lower Level

APPROX. AREA SIZE	
Internal area	184.15 sqm



STRATHFIELD PARTNERS
REAL ESTATE AGENTS

6/188-192 Canterbury Rd, Canterbury

Floor plan, furniture, and fixture measurements and dimensions are approximate and are for illustrative purposes only. Strathfield Partners gives no guarantee, warranty or representation as to the accuracy and completeness of the floor plan.