



STRATHFIELD PARTNERS
REAL ESTATE AGENTS



Shop 48, The Boulevard Strathfield NSW

This massive two (2) level restaurant ready premises has everything you need to start your dream restaurant and is prominently located on The Boulevard! Huge exposure to pedestrians which is perfect to showcase your culinary delights!

- ? Approx. 290m2
- ? 2 Levels of useable space
- ? Grease trap
- ? Exhaust
- ? 3 Phase power
- ? Rear lane access
- ? Close to train, bus, main roads, motorways
- ? Strathfield Town Centre

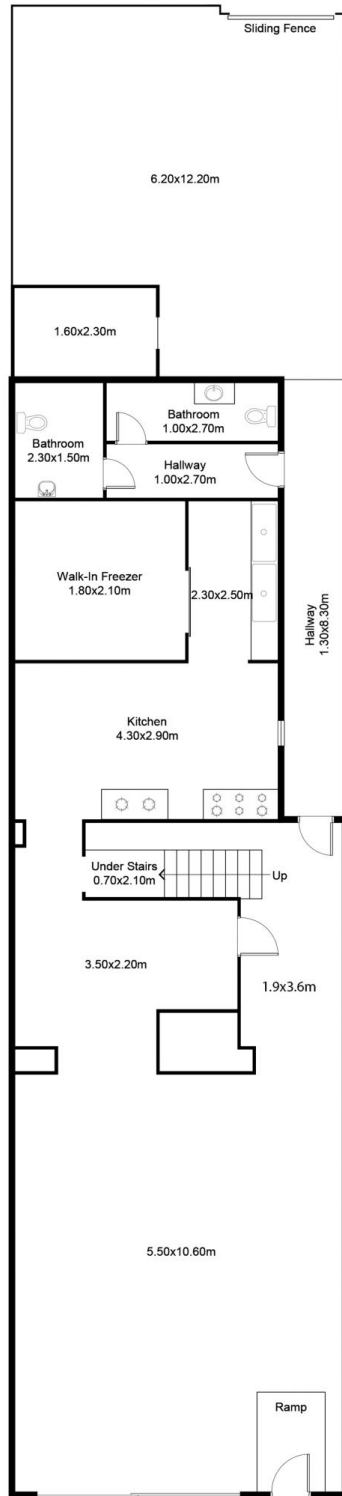
Building Size : 290 sqm
View : <https://www.strathfieldpartners.com.au/lease/nsw/inner-west/strathfield/commercial/retail/6365247>



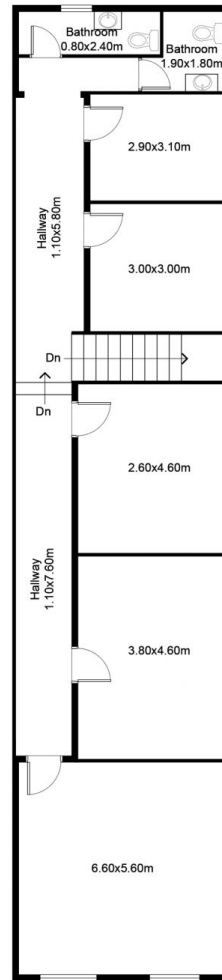
Fabrizio Pignataro
9704 0018



Helen Chai
9704 0043



GROUND FLOOR PLAN



FIRST FLOOR PLAN

APPROX. AREA SIZE
Internal area 299.74 sqm



48 The Boulevard, Strathfield

Floor plan, furniture, and fixture measurements and dimensions are approximate and are for illustrative purposes only. Strathfield Partners gives no guarantee, warranty or representation as to the accuracy and completeness of the floor plan.