



7/46 Beresford Road Strathfield NSW

3 **2** **2**

Sold by Gavin Sanna at Auction!

SPACIOUS AND MODERN IN A PERFECT LOCATION

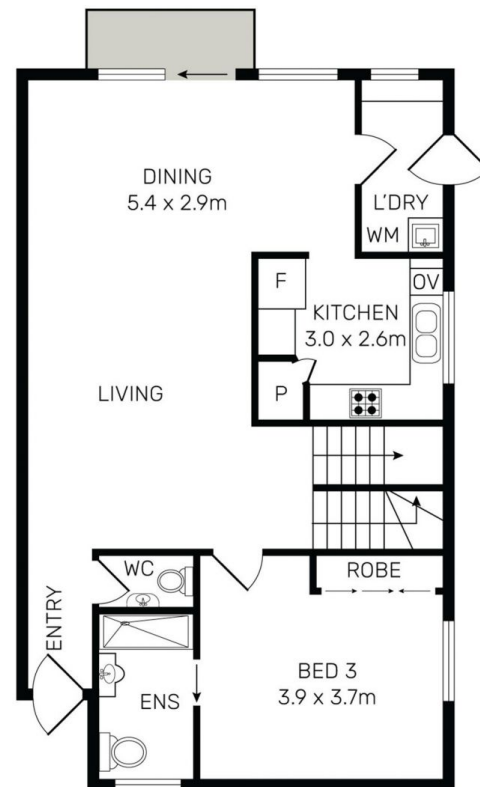
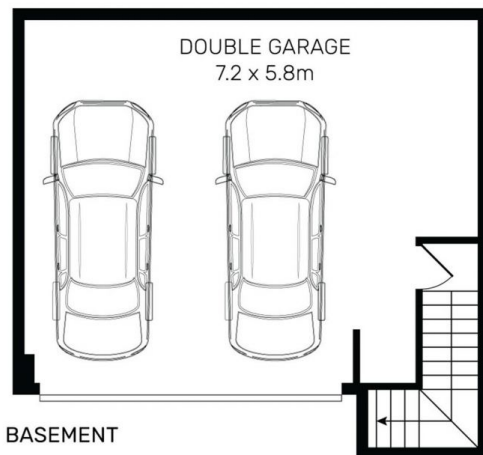
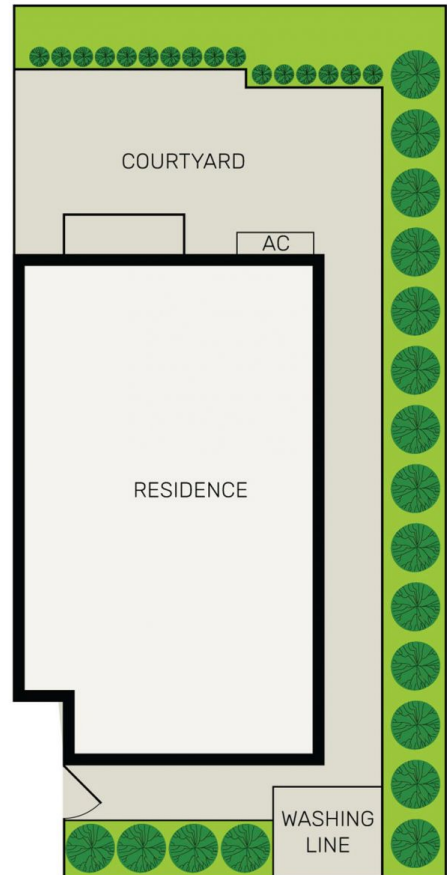
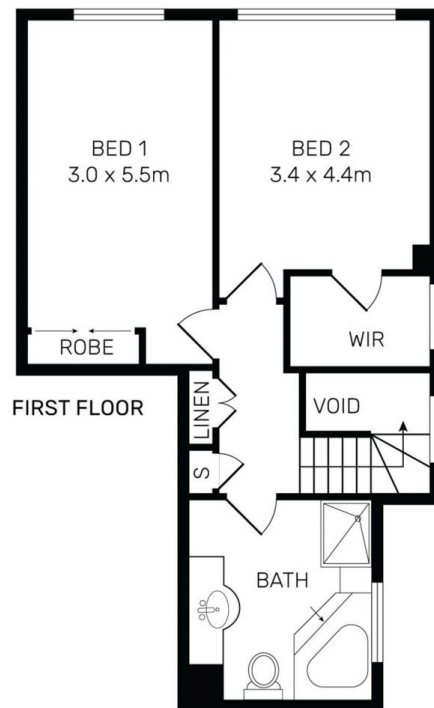
Delivering exceptional privacy and basking in natural light, this immaculate double brick town house occupies an enormous 272m2 of total size. With its recently renewed interiors, features include; ground floor master bedroom with en-suite bathroom, polished timber floors, ducted air conditioning, open plan living with dining flowing out to a wrap-around paved courtyard and landscaped gardens.

Other highlights include, chef style kitchen with gas cooking, dishwasher and 40mm granite benches, spacious bedrooms, one with walk-in wardrobe the other with built-in robe, luxurious main bathroom with spa bath and separate shower, third toilet and internal access to double lock-up

Price : \$ 1,430,000
Building Size : 272 sqm
View : <https://www.strathfieldpartners.com.au/sale/nsw/inner-west/strathfield/residential/townhouse/6385928>



Gavin Sanna
02 9704 0027



7/46 Beresford Road, Strathfield

