



#### A404/37-39 Loftus Crescent Homebush NSW

2  2  1 

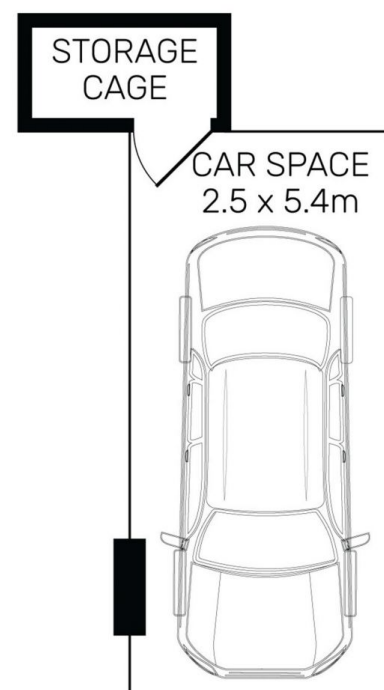
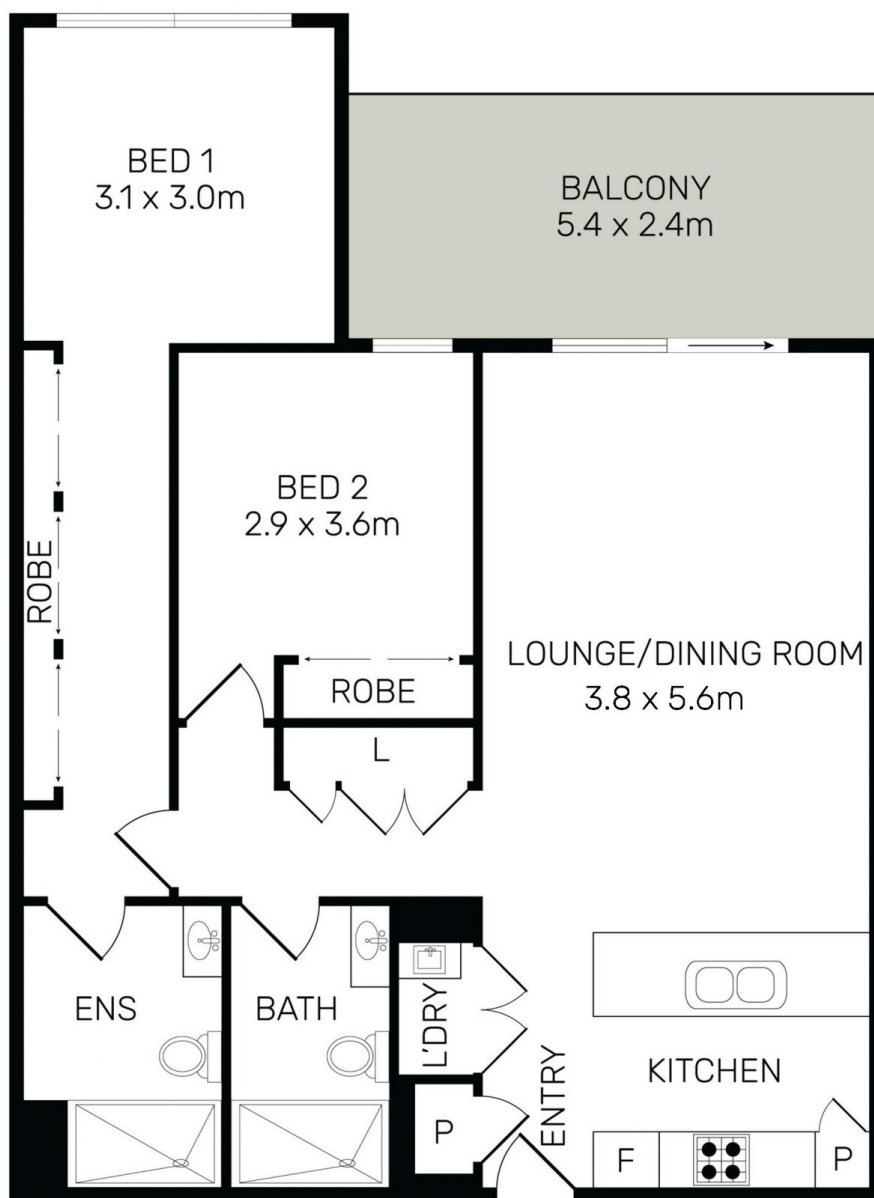
Modern 2 bedroom lifestyle apartment is situated on the 4th floor of a secure complex with lift access. Conveniently located within walking distance to Homebush Station, the property is situated just steps to Cosmopolitan Eateries, Supermarkets, Sydney Olympic Park, and an array of public transport options.

- Stylish kitchen with gas cooking and dishwasher
- Huge lounge and dining area with air-conditioner
- Generous sized bedrooms with built-in wardrobes
- Fully tiled bathroom
- Sundrenched balcony with gas outlet
- Internal laundry with dryer
- Secure car space + storage cage

**View :** <https://www.strathfieldpartners.com.au/sale/nsw/inner-west/homebush/residential/apartment/6392229>



**Elie Semrani**  
9704 0031



A404/37-39 Loftus Crescent, Homebush



Dimensions are approximate. All information contained is gathered from sources we believe to be reliable. However, we cannot guarantee its accuracy and interested party should rely on their own enquires.

(02) 9763 2277