






14 Shipway Street Marsfield NSW

4  3  4 

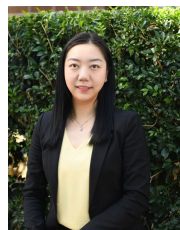
SOLD BY RACHEL FU AND GAVIN SANNA AT AUCTION

With its enticing blend of location and potential, this solidly built family home is ready to move straight in while still offering potential to further enhance. Positioned in a peaceful tree lined cul-de-sac street, showcasing multiple light-filled interiors with tree-top views and a large North facing, child-friendly yard. It's only moments to Macquarie Centre, schools, park lands, buses and schools.

Highlights include :

- * Family room with bar spilling out to alfresco area
- * Light-filled dining room overlooking wonderful district & tree-top views
- * Open-plan kitchen with casual meals area, breakfast bar
- * Enormous 591.3 sqm land, large sun-drenched private level yard

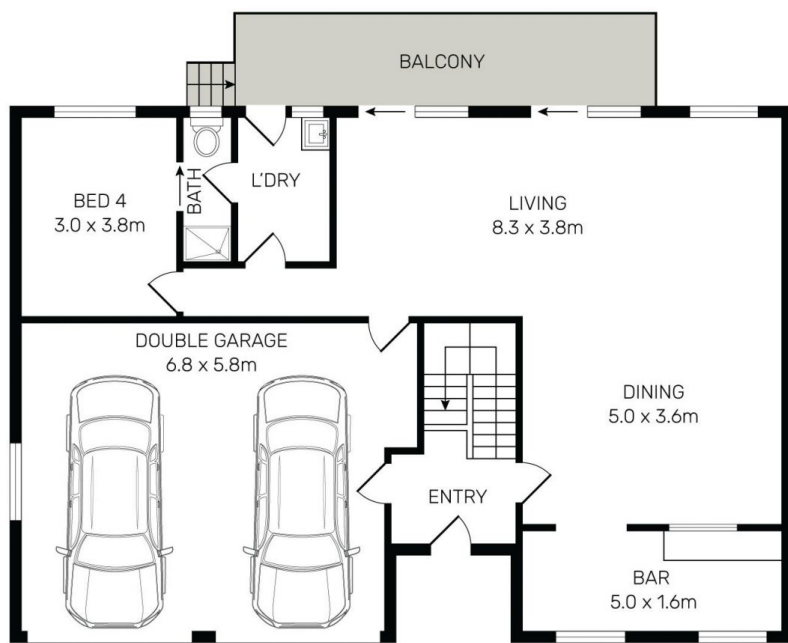
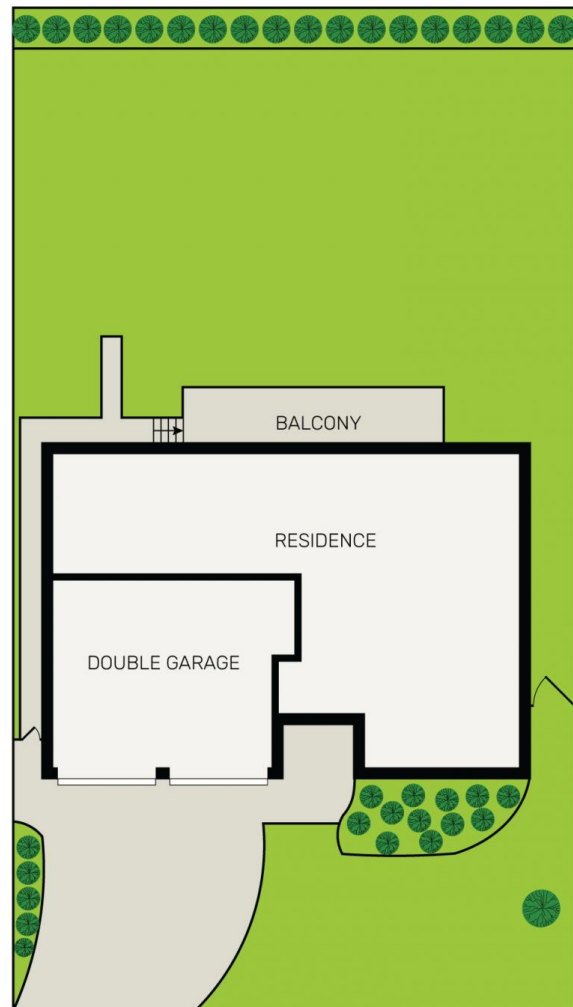
Price : \$ 2,155,000
Land Size : 591 sqm
View : <https://www.strathfieldpartners.com.au/sale/nsw/northern-suburbs/marsfield/residential/house/6402307>



Rachel Yunuo Fu
0433 364 915

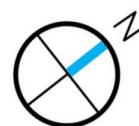


Gavin Sanna
02 9704 0027



STRATHFIELD PARTNERS
REAL ESTATE AGENTS

14 Shipway Street, Marsfield



Dimensions are approximate. All information contained is gathered from sources we believe to be reliable. However, we cannot guarantee its accuracy and interested party should rely on their own enquires.

(02) 9763 2277