



STRATHFIELD PARTNERS
REAL ESTATE AGENTS



6 Claremont Road Burwood Heights NSW

7 🚗 7 🚗 6 🚗

Set on a massive 1, 504m² block of land with 20/26.8 metre wide block, this full brick residence is positioned in a premier Burwood address. Hand craftsmanship, visionary design and luxurious resort-style entertaining unite in this residence which delivers an extraordinary family oasis feeling.

Carefully curated interiors dedicated to family life, with striking open plan living spaces enhanced by a soft textural palette while emoting the refined sophistication of a luxury residence.

The upper level accommodation comprises four generous bedrooms, all of which are appointed with built-in wardrobes. The palatial master features a bespoke boutique-style dressing room and a chic marble ensuite.

Price : \$ 4,601,000
Land Size : 1504 sqm
View : <https://www.strathfieldpartners.com.au/sale/nsw/inner-west/burwood-heights/residential/house/6403268>

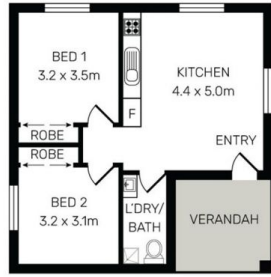


Elie Semrani
9704 0031

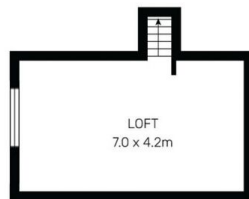
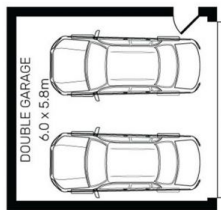


Liz Xuanlin Chen
9704 0005

<https://www.strathfieldpartners.com.au>



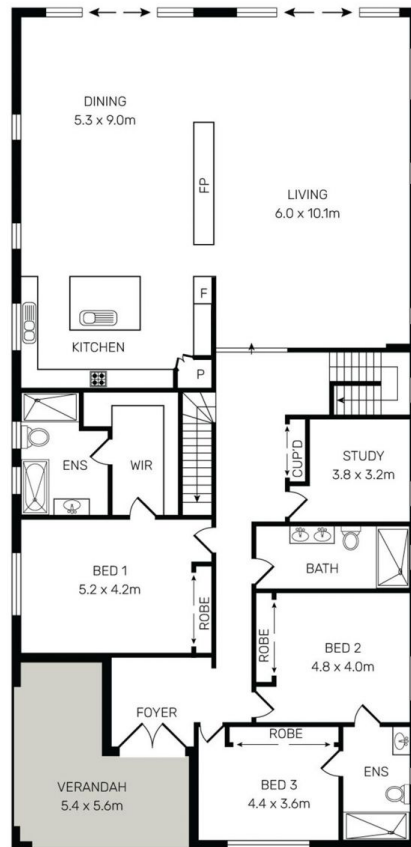
GRANNY FLAT



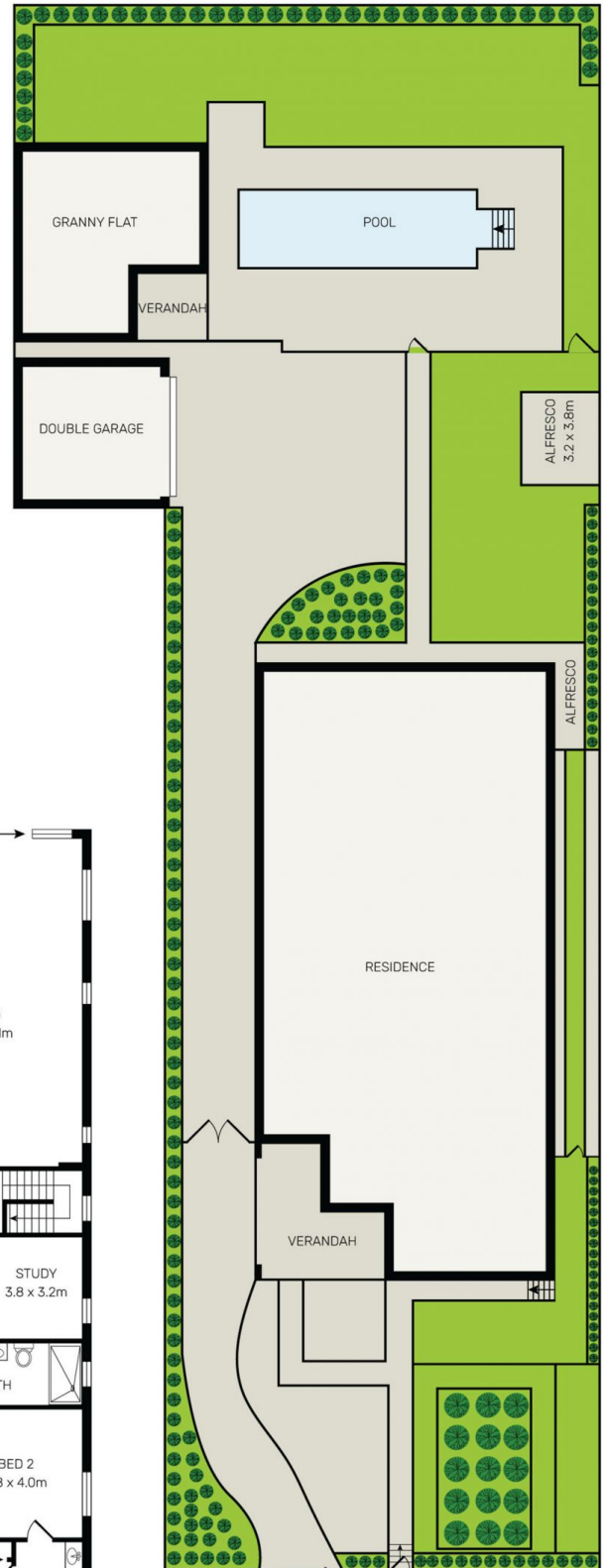
LEVEL 1



BASEMENT



GROUND LEVEL



STRATHFIELD PARTNERS
REAL ESTATE AGENTS

6 Claremont Road, Burwood Heights



Dimensions are approximate. All information contained is gathered from sources we believe to be reliable. However, we cannot guarantee its accuracy and interested party should rely on their own enquires.

(02) 9763 2277