



**STRATHFIELD PARTNERS**  
REAL ESTATE AGENTS



**H5/161 Arthur Street Homebush NSW**

2 🚗

This well established industrial estate has just hit the market with a limited time opportunity for those looking to maximize their business needs with unlimited space and draw dropping roof clearance of 7.5 to 8m TALL!

**Building Size** : 146 sqm  
**Land Size** : 146 sqm  
**View** : <https://www.strathfieldpartners.com.au/ease/nsw/inner-west/homebush/commercial/industrial/6535995>

This superbly constructed office/warehouse is set to impress all once inspected with added value of a gas fitting for select warehouses only.

The building provides quality warehouse accommodation and fits perfectly as an inventory, office and general warehouse space.

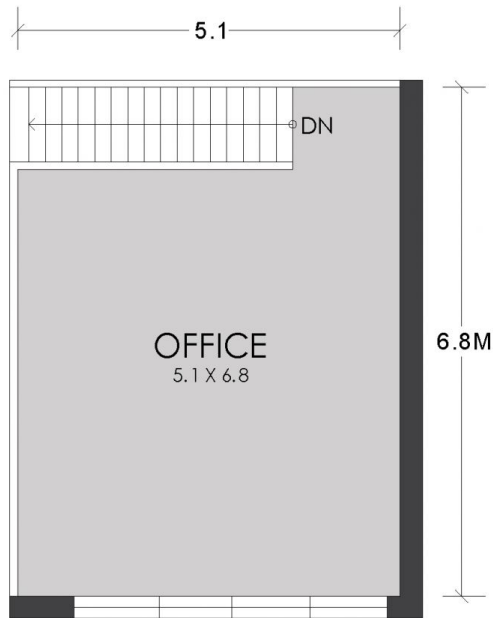
- Dual Shutter Doors
- 2 Secure parking spaces
- Gas fitting valued at extra
- Approx 140 sqm internal area



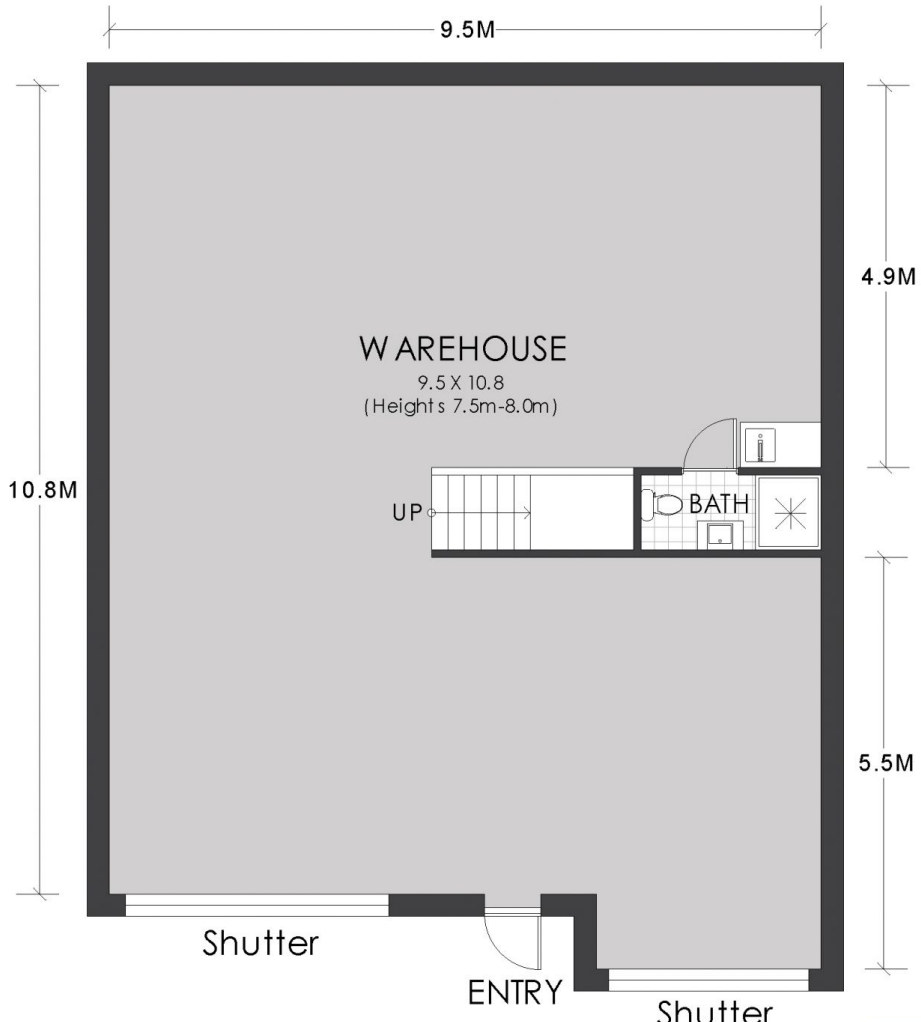
**Helen Chai**  
9704 0043



**Fabrizio Pignataro**  
9704 0018



FIRST FLOOR



GROUND FLOOR

APPROX. AREA SIZE  
Internal area 140.0 sqm



STRATHFIELD PARTNERS  
REAL ESTATE AGENTS

H5/161 Arthur Street, Homebush West

**WARNING: DISCLAIMER** This information is not to be relied upon. It is strictly used for marketing and illustration purposes only. All measurements are approximate. Not to scale. No liability accepted. You must rely on your own inquiries and seek advice from your solicitor. Floor plan by [cnkplan@cnkplan.com.au](mailto:cnkplan@cnkplan.com.au) / [www.cnkplan.com.au](http://www.cnkplan.com.au)