



STRATHFIELD PARTNERS
REAL ESTATE AGENTS



108/1 Missenden Road Camperdown NSW

2 1 1

Sold by Gavin Sanna!

Iconic Rhodes House warehouse apartment

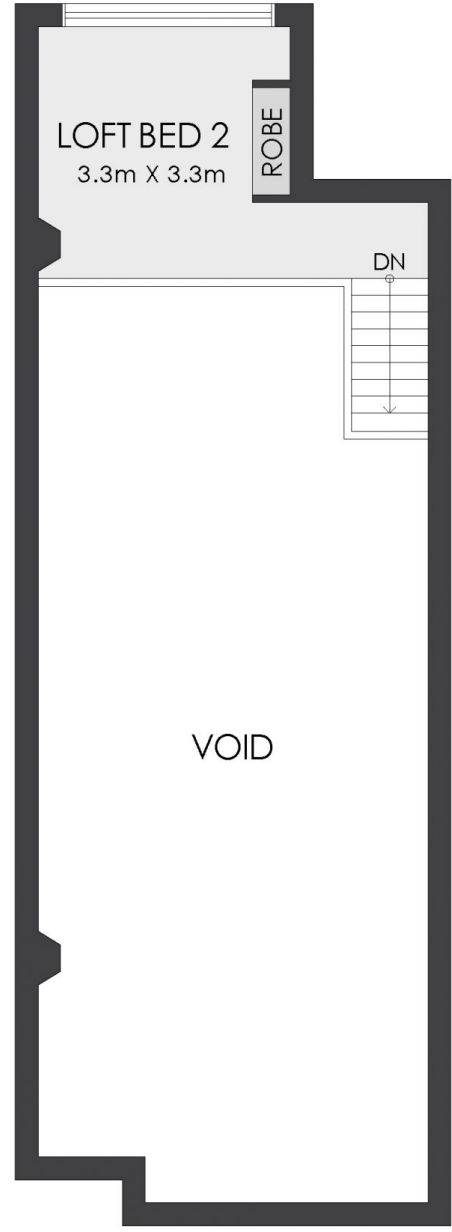
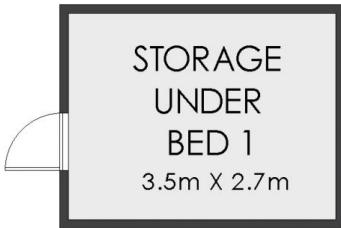
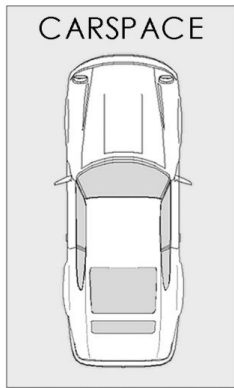
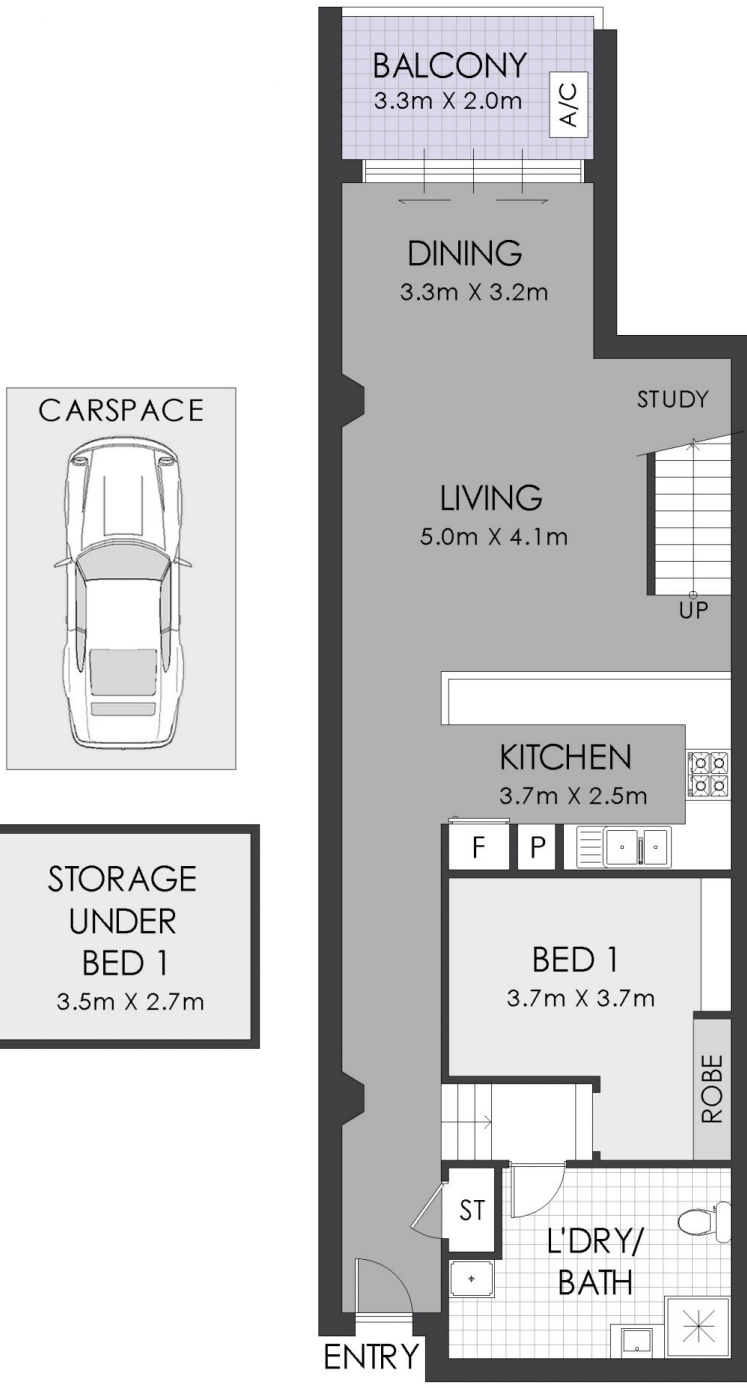
An urban sanctuary of house-like proportions, this apartment in Iconic Rhodes House, impresses with its generous split-level layout featuring soaring 5 metre high ceilings, large expanses of glass and original warehouse columns. Scope to add further improvements or create additional floor space for another living room/bedroom/bath STCA as has been done by others.

Enhancing the sense of space are an entry hall, large open-plan kitchen, dining and living areas flowing to a covered north facing, alfresco balcony. Combining generous space with resort-style amenities and exceptional convenience, the apartment is in a secure

Building Size : 90 sqm
View : <https://www.strathfieldpartners.com.au/sale/nsw/inner-west/camperdown/residential/unit/6546851>



Gavin Sanna
02 9704 0027



GROUND FLOOR

FIRST FLOOR



STRATHFIELD PARTNERS
REAL ESTATE AGENTS

108/1 Missenden Road, Camperdown

WARNING: DISCLAIMER This information is not to be relied upon. It is strictly used for marketing and illustration purposes only. All measurements are approximate. Not to scale. No liability accepted. You must rely on your own inquiries and seek advice from your solicitor. Floor plan by cnkplan@cnkplan.com.au / www.cnkplan.com.au