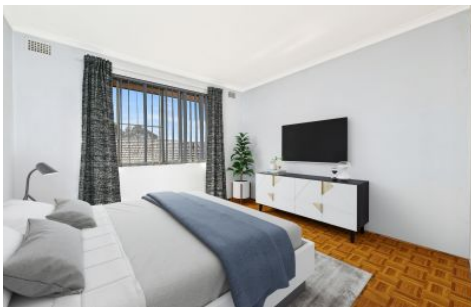




STRATHFIELD PARTNERS
REAL ESTATE AGENTS



6/4 Julia Street Ashfield NSW

2 1 1

If you're searching for your first home or quality investment property, then look no further than this two-bedroom unit. This well-maintained double brick residence is conveniently located on the second floor of a small well maintained security block is situated in an ultra-convenient location with transport and a host of Inner West lifestyle facilities all at your doorstep.

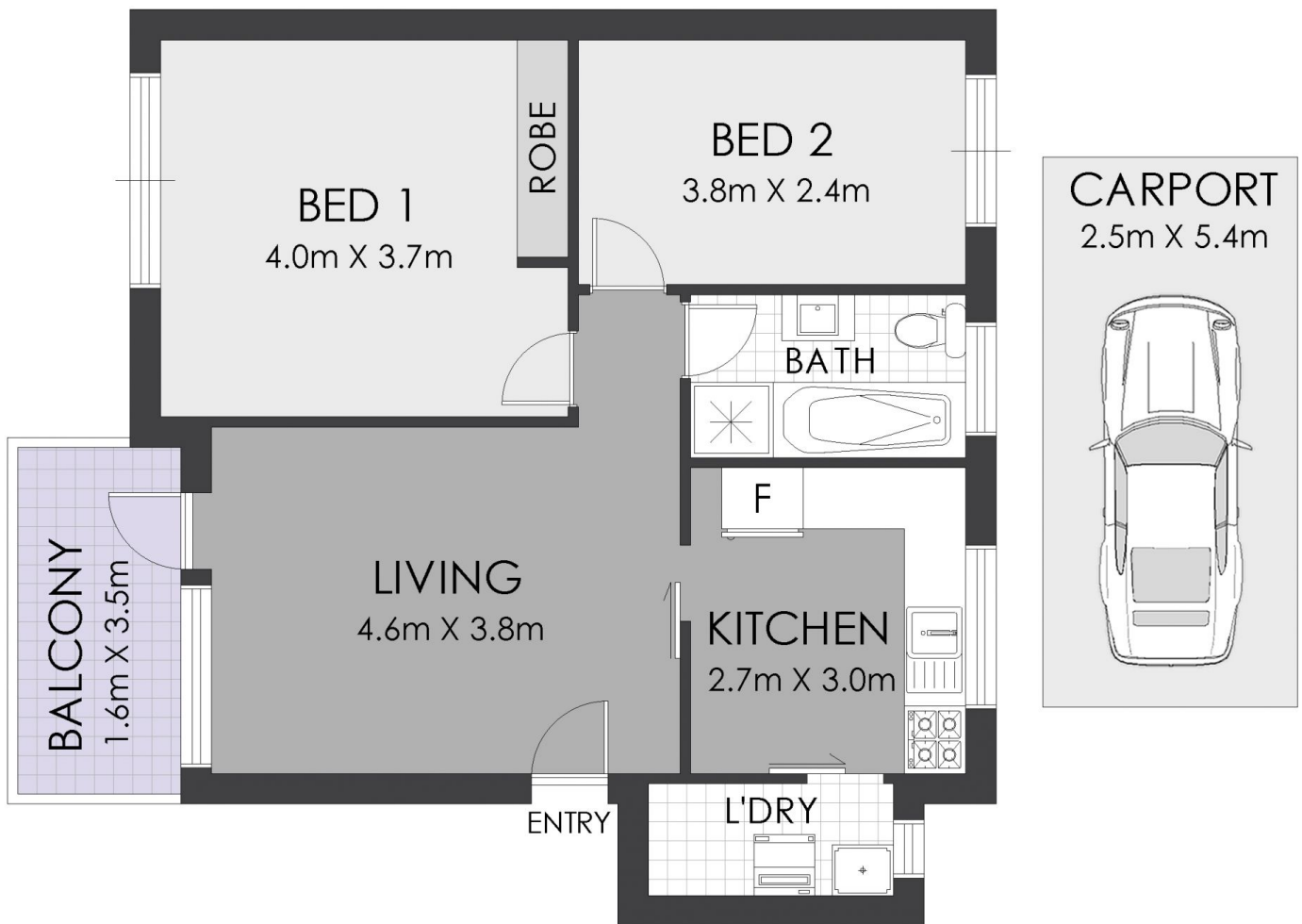
Features:

- Two generous sized bedrooms, main with built-in robe
- Neat and tidy eat-in kitchen with access to a separate internal laundry
- Open plan living and dining area opens to a private balcony
- Period full bathroom with separate bathtub and shower plus a carport on title
- Moments to transport, local schools, Ashfield Mall and

View : <https://www.strathfieldpartners.com.au/sale/nsw/inner-west/ashfield/residential/apartment/6591818>



Louisa Tsendsuren
02 9763 2277



FLOOR PLAN



STRATHFIELD PARTNERS
REAL ESTATE AGENTS

6/4 Julia Street, Ashfield

WARNING: DISCLAIMER This information is not to be relied upon. It is strictly used for marketing and illustration purposes only. All measurements are approximate. Not to scale. No liability accepted. You must rely on your own inquiries and seek advice from your solicitor. Floor plan by cnkplan@cnkplan.com.au / www.cnkplan.com.au