



STRATHFIELD PARTNERS
REAL ESTATE AGENTS



206/29-35 Burlington Road Homebush NSW

2 2 1

"VOGUE" is a collection of designer residences located in the heart of Homebush. A rare retreat in one of Sydney's most affluent, sought-after locations, it is a showcase of modern design.

This two-bed, two-bath residence does not compromise on space. The expansive open plan living flows effortlessly into a sundrenched outdoor terrace, while the generous master suite opens up a private ensuite. Inspired by a natural material palette, the interiors are sophisticated yet contemporary, with solid timber floors underfoot.

Enjoy the stunning kitchen, a real centrepiece boasting a large caser-stone island benchtop. Abundant storage offers a place for everything, with high-end SMEG appliances fully integrated within streamlined cabinetry.

Price : \$ 753,000

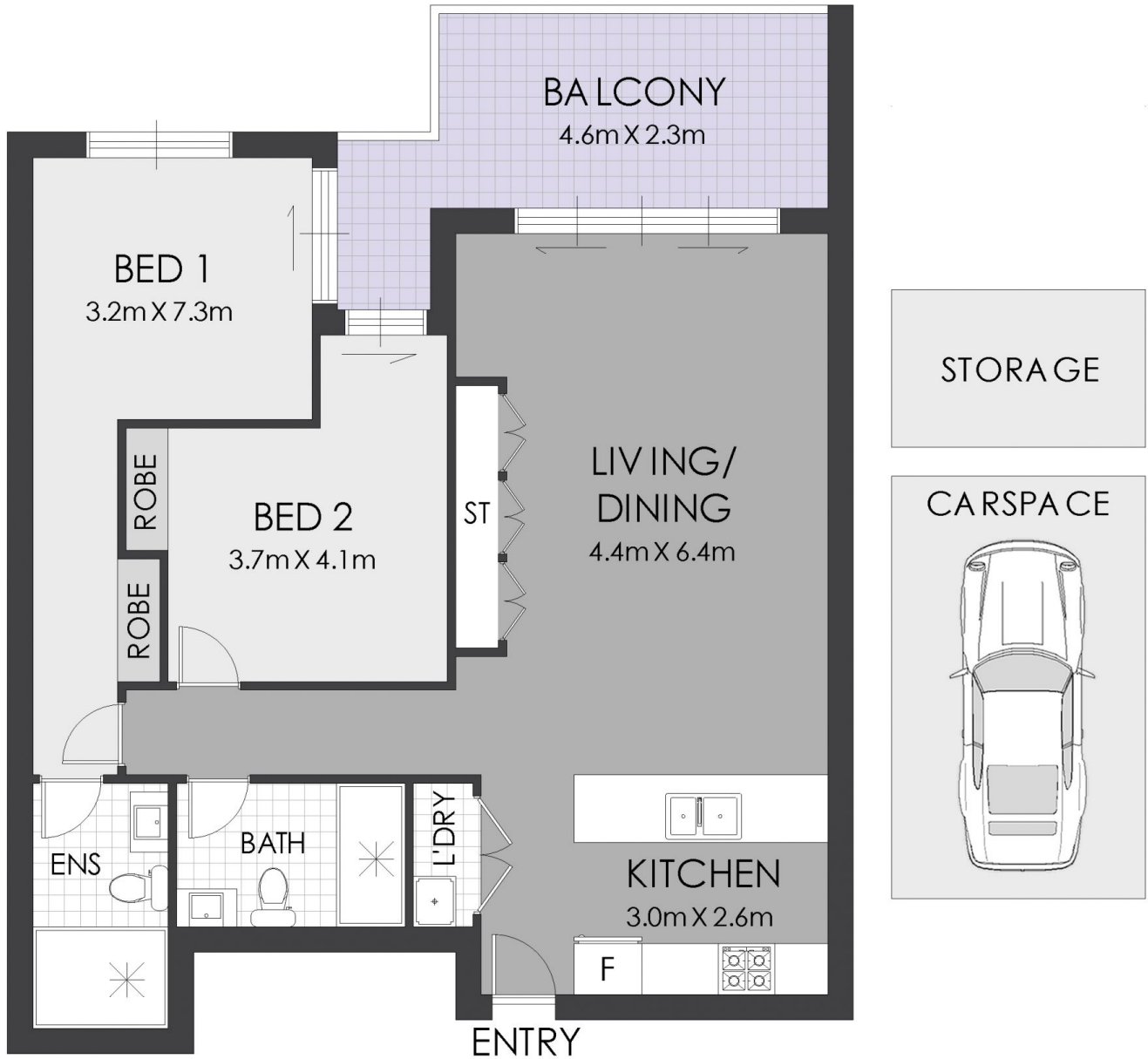
View : <https://www.strathfieldpartners.com.au/sale/nsw/inner-west/homebush/residential/apartment/6620687>



Elie Semrani
9704 0031



Adrian Jian-Sheng Wu
02 9763 2277



FLOOR PLAN



STRATHFIELD PARTNERS
REAL ESTATE AGENTS

206/29-35 Burlington Road, Homebush

WARNING: DISCLAIMER This information is not to be relied upon. It is strictly used for marketing and illustration purposes only. All measurements are approximate. Not to scale. No liability accepted. You must rely on your own inquiries and seek advice from your solicitor. Floor plan by cnkplan@cnkplan.com.au / www.cnkplan.com.au