



498 Liverpool Road Strathfield South NSW

3  2  2 

This Stylish home located close to transport, schools & shops has enormous potential possibility.

- 3 Generous size bedrooms with built-ins & ensuite to main
- Large formal Living areas
- Ultra-modern kitchen with stainless steel appliances & Caesar stone benchtops
- Tastefully updated bathroom
- Barton street-side access & plenty on & off street parking
- Land 589m2 approx. with 16m frontage

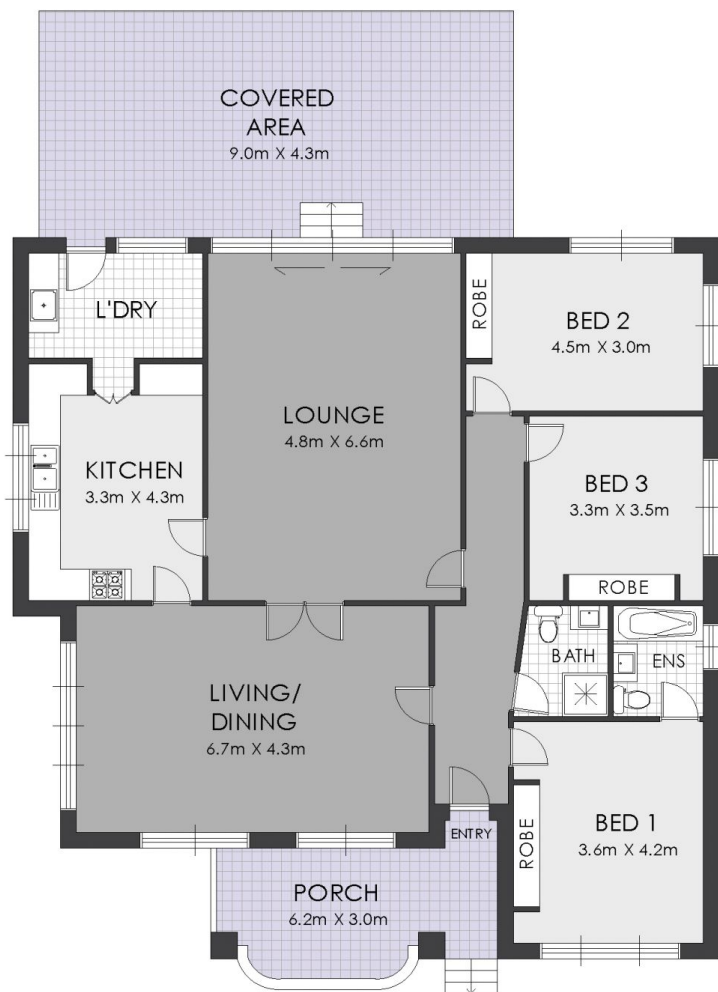
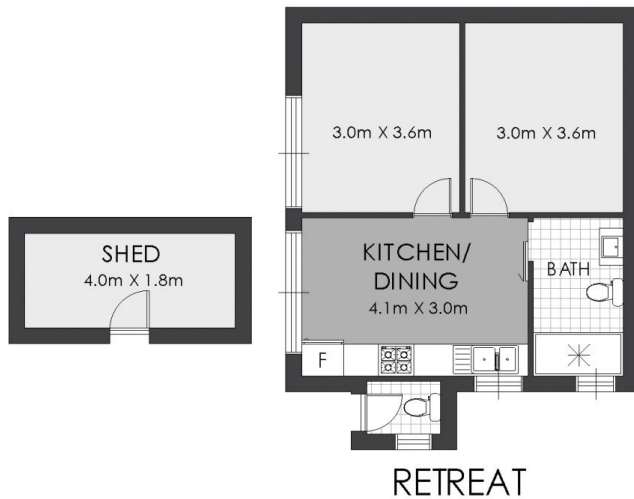
Price : \$ 1,825,000

Land Size : 589 sqm

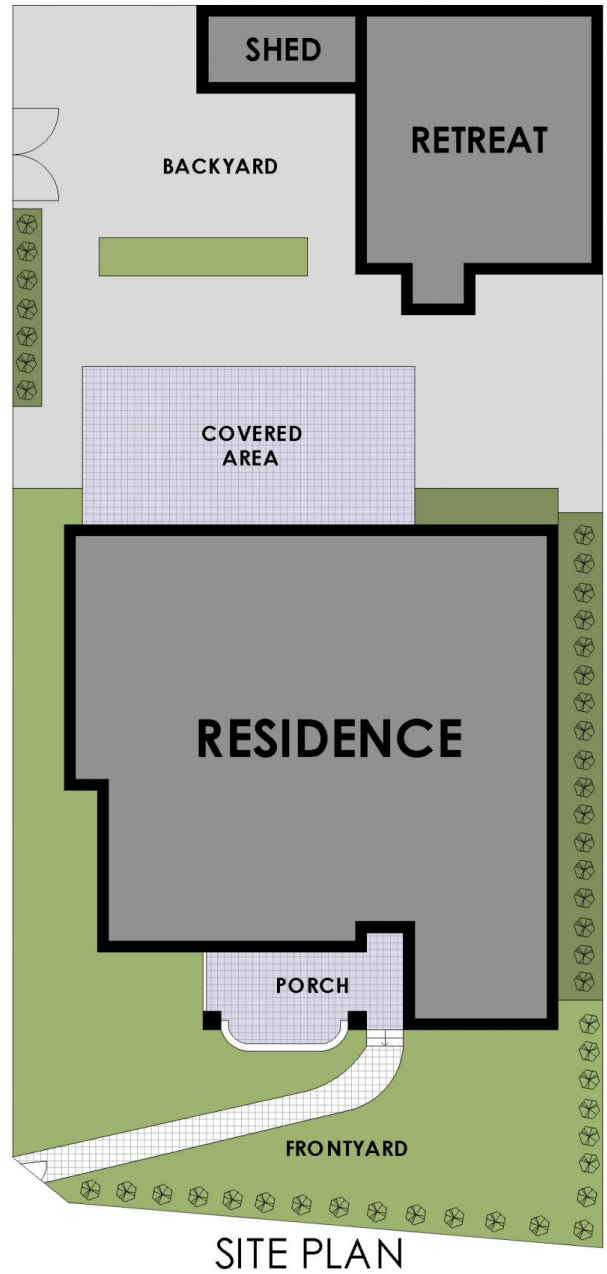
View : <https://www.strathfieldpartners.com.au/sale/nsw/inner-west/strathfield-south/residential/house/6653563>



Vanessa Kim
9704 0009



FLOOR PLAN



STRATHFIELD PARTNERS
REAL ESTATE AGENTS

498 Liverpool Road, Strathfield South

WARNING: DISCLAIMER This information is not to be relied upon. It is strictly used for marketing and illustration purposes only. All measurements are approximate. Not to scale. No liability accepted. You must rely on your own inquiries and seek advice from your solicitor. Floor plan by cnkplan@cnkplan.com.au / www.cnkplan.com.au