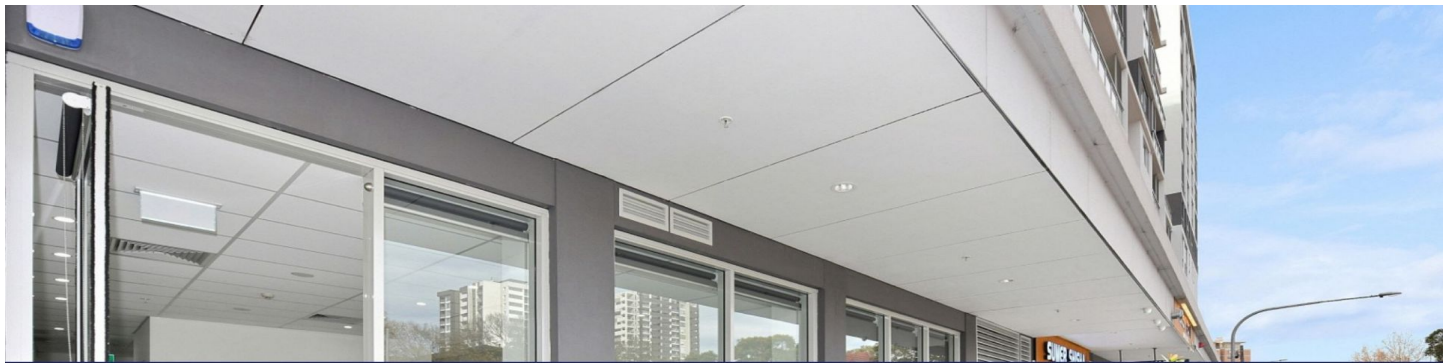




STRATHFIELD PARTNERS
REAL ESTATE AGENTS



LEASED BY ROBERT PIGNATARO



Shop 1 & 2/15 Mary Street Auburn NSW

5 🚗

A good opportunity to secure brand new retail space, ideal for just about any type of practitioner - therapy, psychology, medical, allied health, treatment, cosmetic and beauty.

Building Size : 167 sqm
View : <https://www.strathfieldpartners.com.au/lease/nsw/parramatta/auburn/commercial/healthcare/7072047>

Features:

- Small rooms available from 20-167sqm
- Corner position with excellent exposure to Mary Street
- Secure Parking
- Fully air conditioned
- Competitive rental, priced to lease

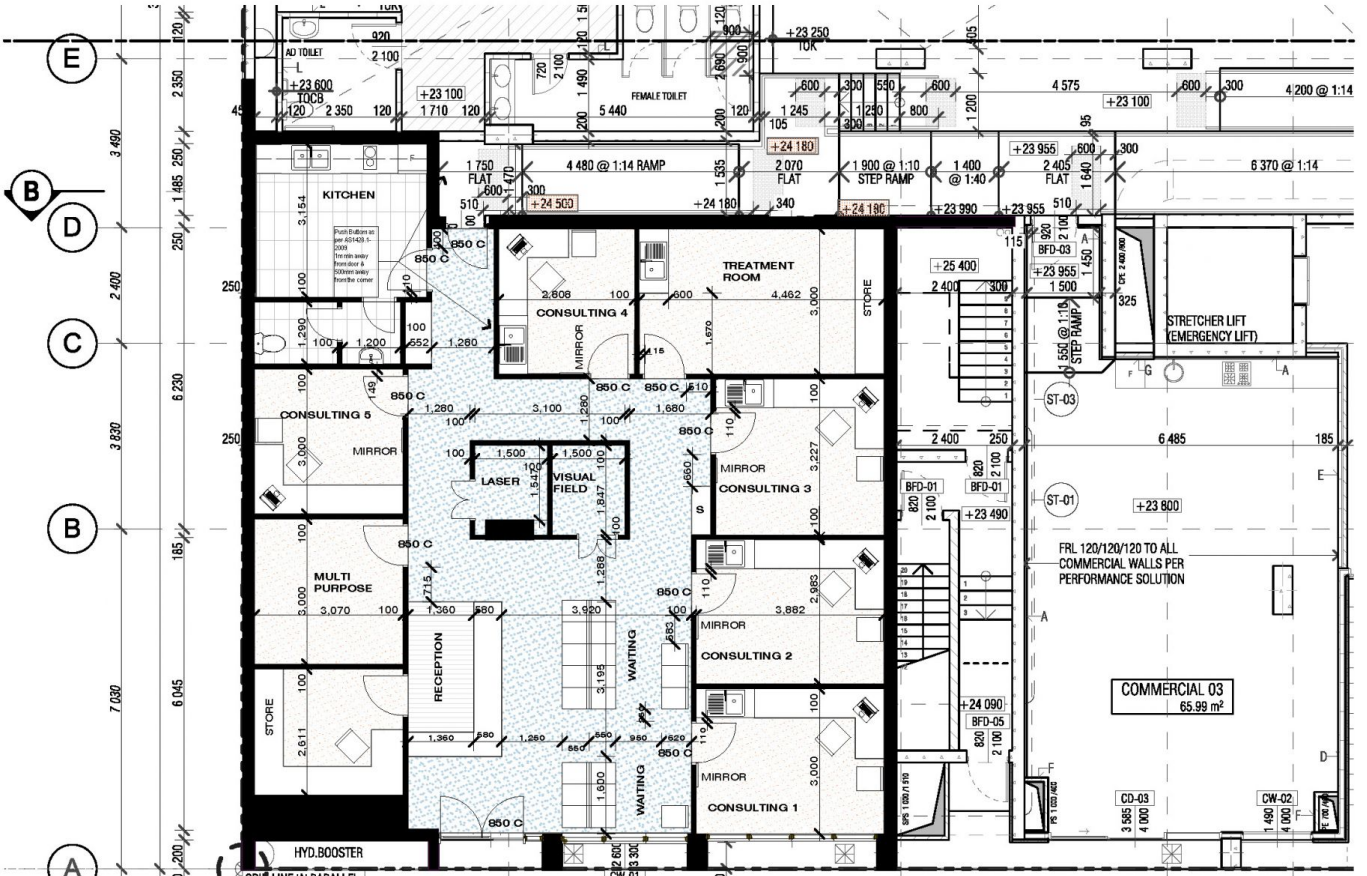
For further information, please contact the exclusive selling agents listed below.



Robert Pignataro
9763 2277



Adam Eid
02 9763 2277



(ADAPTATION OF COMMERCIAL(01) - BLOCK B- MIXED USE MULTI RESIDENTIAL
 ISSUE FOR CDC APPROVAL 23/05/2020

Nominated Architects | Ziad Boumeithem Reg no 8008 | Youssef El Khawaja Reg no 8933 | Nicolas Toubia Reg no 9336

COVER | 1:100@A4 | XXXX (Project ID) | DA-000
 Copyright URBAN LINK PTY LTD © Approved: Rev. 01 - WIP Work in Progress