



**403/8 Parramatta Road Strathfield NSW**

2  2  1 

**SOLD BY GAVIN SANNA**

Sydney City and Harbour Bridge views

Built with innovative detail and excellent finishes with it's high ceilings, smart design, floor-ceiling sliding doors and a generous list of inclusions - this ultra modern entertainer is Ideally positioned within walking distance to Strathfield Station, shops and amenities and short walk to North Strathfields Bakehouse Quarter.

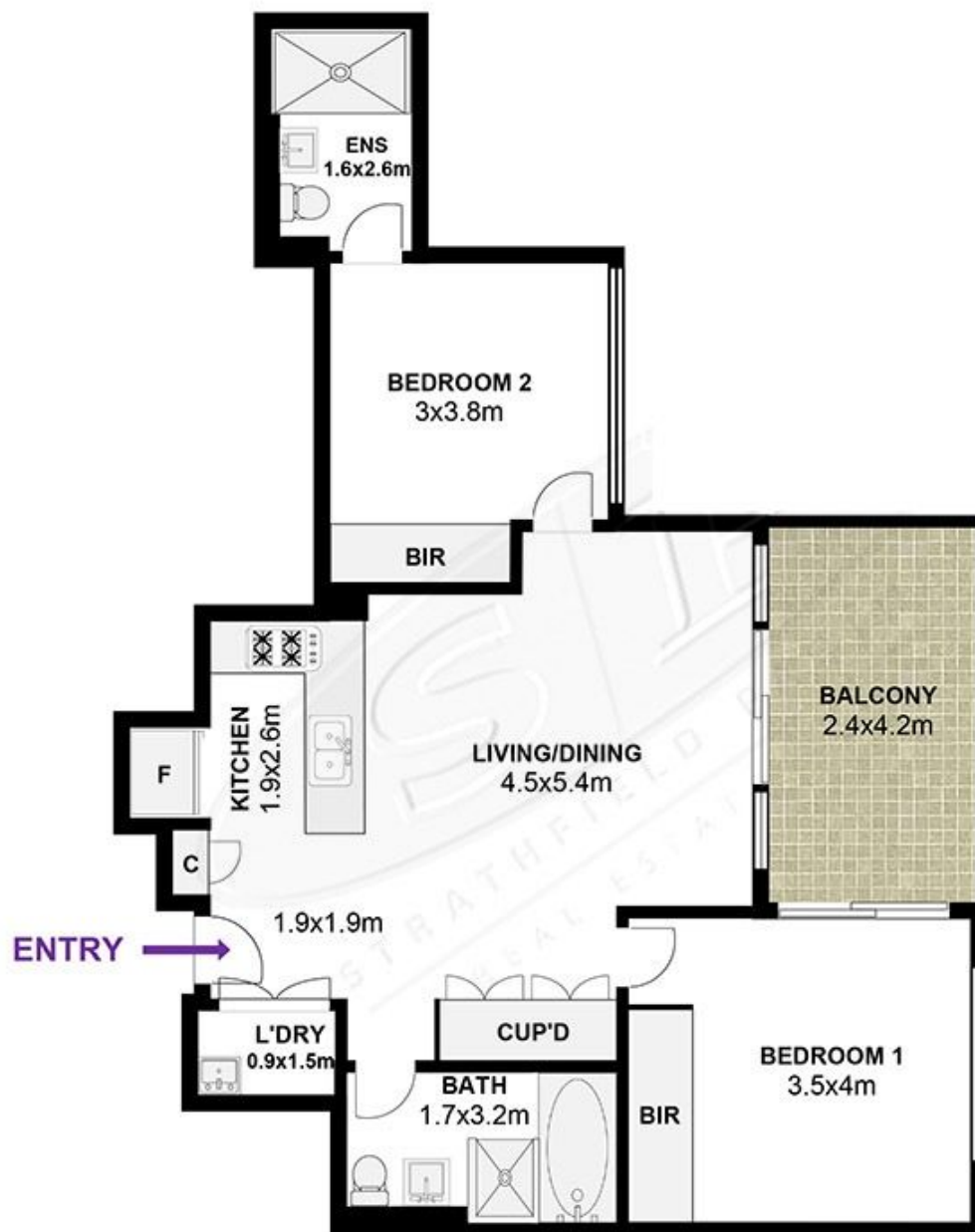
Highlights include:

- Spectacular Sydney city views
- Fully refreshed, ready to move straight in
- North East facing bedrooms and balcony
- SMEG appointed gas kitchen, stone benches
- Generous bedrooms with built-ins and large windows

**Price** : \$ 625,000  
**Building Size** : 93 sqm  
**View** : <https://www.strathfieldpartners.com.au/sale/nsw/inner-west/strathfield/residential/apartment/7167953>



**Gavin Sanna**  
**02 9704 0027**



The following floor plan is shown for presentation purposes only and is not part of any legal document. All measurements and figures are approximate.