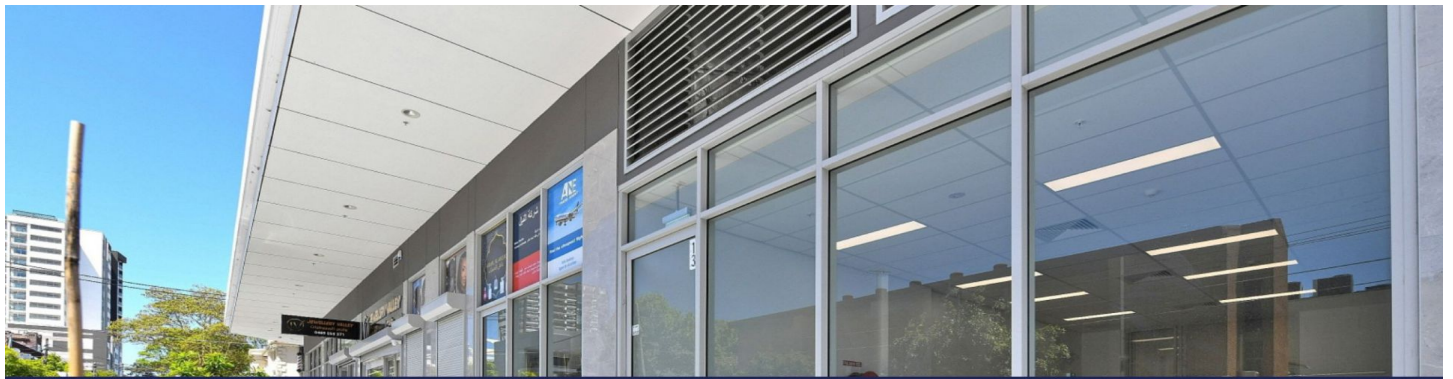
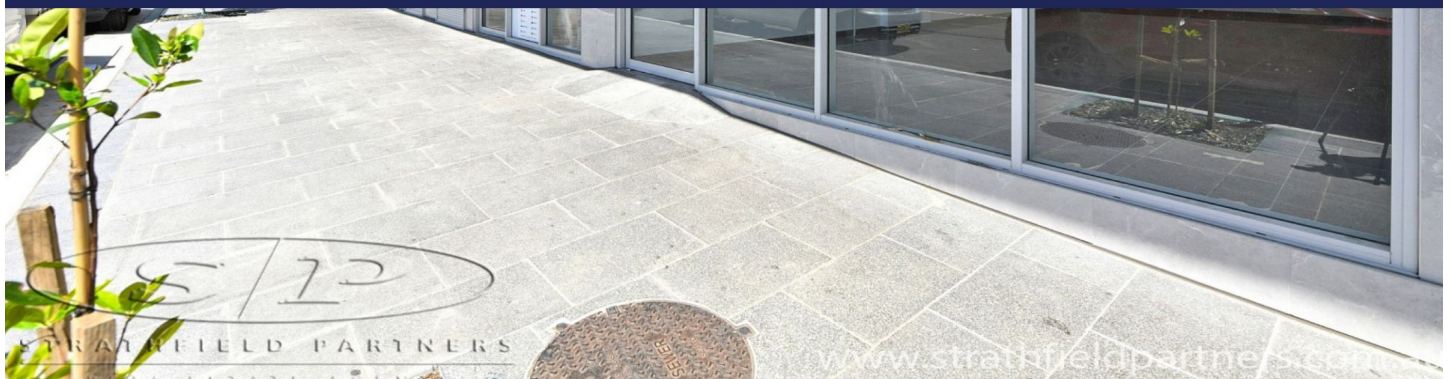




STRATHFIELD PARTNERS
REAL ESTATE AGENTS



LEASED BY FABRIZIO PIGNATARO



Shop 13, Mary Street Auburn NSW



Strathfield Partners is pleased to present a BRAND NEW! near ready suburban street front coming to Auburn. This commercial property offers maximum exposure and is unquestionably your ticket to a thriving business, suitable for a variety of business purposes.

- Convenient location near transport and shops
- Secure Parking
- Fitted with Air Conditioning
- Spacious interiors
- High demand location

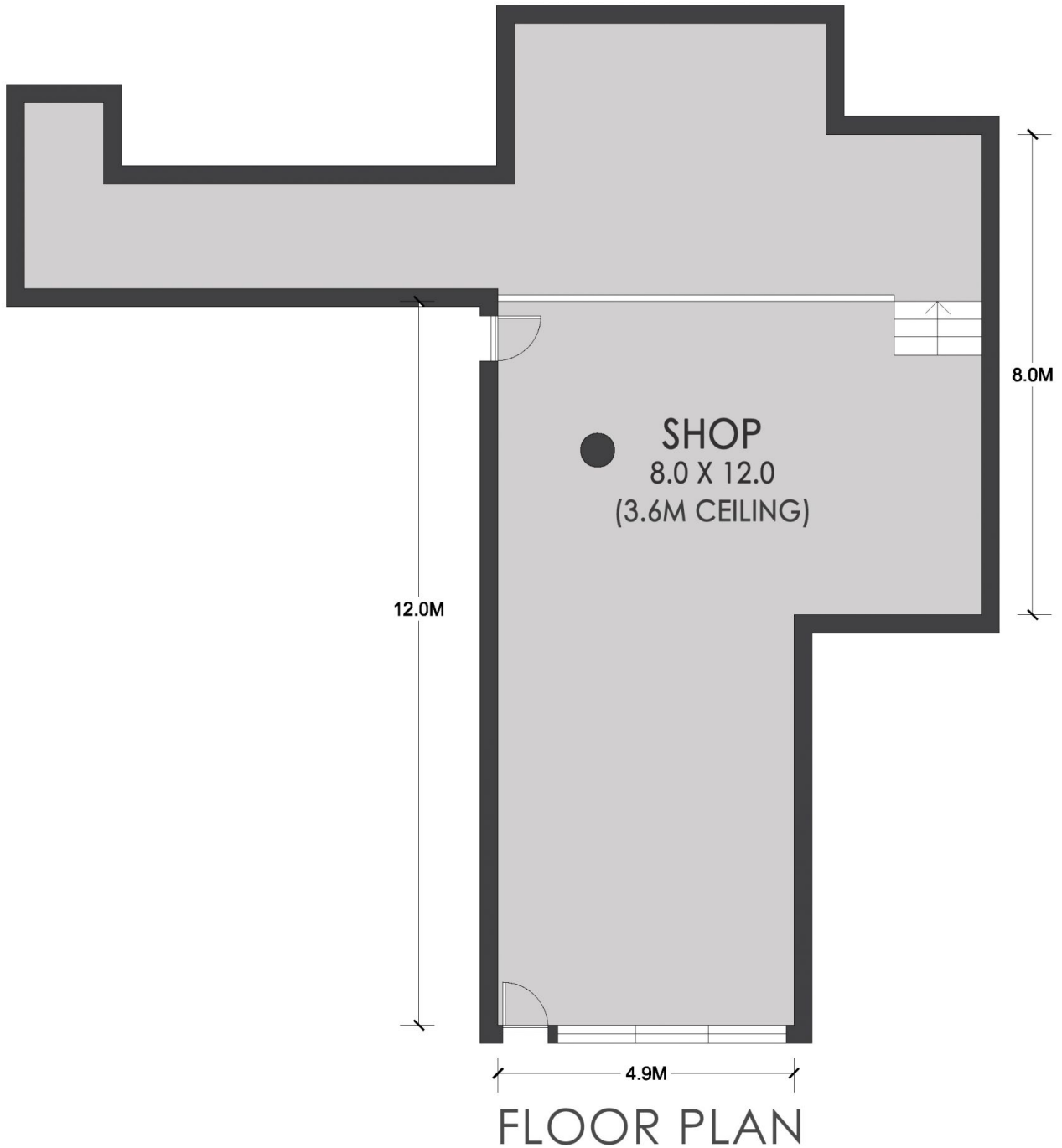
Building Size : 122 sqm
View : <https://www.strathfieldpartners.com.au/lease/nsw/parramatta/auburn/commercial/retail/7489451>



Robert Pignataro
9763 2277



Adam Eid
02 9763 2277



APPROX. AREA SIZE	
Internal area	122 sqm



STRATHFIELD PARTNERS
REAL ESTATE AGENTS

Shop 13/9-19 Mary Street, Auburn

WARNING: DISCLAIMER This information is not to be relied upon. It is strictly used for marketing and illustration purposes only. All measurements are approximate. Not to scale. No liability accepted. You must rely on your own inquiries and seek advice from your solicitor. Floor plan by cnkplan@cnkplan.com.au / www.cnkplan.com.au